



PIERWELL

DUNDARAVE

ADVANCED PREVIEW PACKAGE

Life,
Well
Lived



A Limited Collection of
36 Oceanside Residences
in Dundarave Village

At an iconic address in West Vancouver's coveted oceanside enclave of Dundarave Village, Pierwell stands as an exceptionally rare opportunity to live mere steps from the shore. This unique development heralds a lively future for a place enriched by history and traditions, destined to host a vibrant mix of boutique businesses — from charming shops, cozy cafés, and delectable restaurants.

Pierwell is poised to set the stage for a dynamic, community-centric living experience.

ARCHITECTURE

Luxury Living by Ocean's Edge



Crafted by Arcadis IBI Group, Pierwell's architecture harmonizes with the existing character of the local streetscape while introducing a sleek, fresh highlight. These residences shine with thoughtful layouts, providing vast outdoor spaces, including balconies, terraces, and exclusive rooftop patios. At street level, you'll find boutique-style retail spaces and a prominent courtyard that serves as a gathering place for both residents and the community to enjoy and socialize.

↑ Dundarave Lane: The Beachside Homes place you just steps away from the shore.



In a scenic setting where the North Shore mountains descend to meet the ripples of the Pacific, Dundarave Village offers a picturesque living canvas where nature's playground is just moments from your doorstep. This storied neighbourhood, a historical gem once reached only by boat, is connected to Vancouver's metropolitan pulse, just a short and picturesque drive from home.



LOCATION

A Community Steeped
in Natural Splendour &
Rich Heritage

LOCATION

An Iconic Address in a Historic Neighbourhood

P PIERWELL
BUILDING SITE LOCATION & SALES GALLERY

PARKS & RECREATION

- 01 COMMUNITY CENTRE | WEST VANCOUVER
- 02 AQUATIC CENTRE | WEST VANCOUVER
- 03 WEST VANCOUVER TENNIS CLUB
- 04 HOLLYBURN COUNTRY CLUB
- 05 WEST VANCOUVER LAWN BOWLING CLUB
- 06 DUNDARAVE BEACH
- 07 DUNDARAVE PIER
- 08 AMBLESIDE BEACH
- 09 WEST VANCOUVER CENTENNIAL SEAWALK
- 10 AMBLESIDE PARK
- 11 NAVVY JACK POINT PARK
- 12 MEMORIAL PARK
- 13 JOHN LAWSON PARK
- 14 KAY MEEK ARTS CENTRE
- 15 WEST VANCOUVER ART MUSEUM
- 16 FERRY BUILDING GALLERY
- 17 WEST VANCOUVER MEMORIAL LIBRARY

SCHOOLS

- 18 DUNDARAVE PRESCHOOL BY THE SEA
- 19 IRWIN PARK ELEMENTARY SCHOOL
- 20 WEST VANCOUVER SECONDARY SCHOOL
- 21 MULGARVE SCHOOL
- 22 COLLINGWOOD SCHOOL WENTWORTH CAMPUS

RESTAURANTS & CAFÉS

- 23 THE BEACH HOUSE RESTAURANT
- 24 CHEZ MICHEL
- 25 ANCORA WATERFRONT DINING AND PATIO (AMBLESIDE)
- 26 CARMELO'S RISTORANTE ITALIANO
- 27 THE KEG STEAKHOUSE + BAR - PARK ROYAL
- 28 RAKU JAPANESE KITCHEN
- 29 THE BAKEHOUSE
- 30 DELANY'S COFFEE HOUSE
- 31 TEMPER CHOCOLATE & PASTRY
- 32 THE MODERN PANTRY
- 33 CREMA CAFÉ BAR

SHOPPING & CONVENIENCE

- 34 PARK ROYAL
- 35 FRESH ST. MARKET
- 36 WHOLE FOODS MARKET
- 37 IGA
- 38 SEBASTIAN & CO FINE MEATS
- 39 ANGRY OTTER LIQUOR @ DUNDARAVE
- 40 OKANAGAN ESTATE WINE CELLAR
- 41 TESLA
- 42 RBC WEALTH MANAGEMENT
- 43 TD CANADA TRUST BRANCH AND ATM
- 44 CIBC WOOD GUNDY WEST VANCOUVER BRANCH

- ▶ PARK ROYAL
5 Minute Drive
- ▶ WHYTE LAKE PARK
12 Minute Drive
- ▶ LIGHTHOUSE PARK
19 Minute Drive
- ▶ HORSESHOE BAY
13 Minute Drive
- ▶ CLEVELAND DAM
15 Minute Drive
- ▶ WHISTLER
1.5 Hour Drive
- ▶ MOUNT SEYMOUR
37 Minute Drive
- ▶ CYPRESS MOUNTAIN
21 Minute Drive
- ▶ GROUSE MOUNTAIN
19 Minute Drive
- ▶ CAPILANO PACIFIC TRAIL
10 Minute Drive
- ▶ DOWNTOWN VANCOUVER
20 Minute Drive





All Roads Lead from Pierwell

THE OCEAN IN YOUR BACKYARD

Steps from your door you'll find the Pacific Ocean — indulge in a day at the beach, take a stroll along the Centennial Seawalk or bring the little ones to one of the many charming playgrounds that dot the shoreline.

MOUNTAINS BECKON NEARBY

Mountain adventures are just moments away — whether you're keen on hitting the snowy slopes or embarking on a scenic hike, the surrounding peaks always offer endless outdoor exhilaration.

EXCELLENCE IN EDUCATION

Boasting some of the top-ranked institutions in British Columbia, West Vancouver schools offer a blend of innovative curriculum, passionate educators, and state-of-the-art facilities.

EVERYDAY & BOUTIQUE CONVENIENCES

Get your daily essentials at IGA just across the street or stroll over to Sebastian & Co for the perfect cut. A quick drive takes you to Park Royal where you'll find over 200 diverse stores.

INDULGENCES AREN'T FAR

Satisfy your sweet tooth or get your caffeine fix at Delany's or Temper Chocolate & Pastry. When you're in the mood for a savoury bite or a finely crafted cocktail, Bar Olo and the Beach House await, offering the perfect backdrop to unwind.

GATEWAY TO ADVENTURE

Craving a weekend getaway to Vancouver Island or the scenic Sunshine Coast? Horseshoe Bay is just a short drive away, serving as your launchpad to countless adventures in the stunning Pacific Northwest.

VIBRANT COMMUNITY HUBS

Proximity to the West Vancouver Community Centre and Aquatic Centre adds a splash of convenience and recreation to daily living. Nearby, Hollyburn Country Club offers upscale amenities and a hub for social engagements.



INTERIORS

Bespoke Interiors Exude Coastal Refinement



From Italy to Your Home

Pierwell homes feature Italian-made cabinetry and closet systems from Stosa Cucine, renowned for producing high-quality products since 1964. These exquisitely crafted pieces arrive from Italy to be masterfully installed by Inform Projects, a leader in high-end European cabinetry in Canada. This partnership is more than a process, it's a commitment to quality and design innovation.



→ Tailor your space with a choice of oak or walnut cabinetry and designer-curated stone palettes. Kitchens are equipped with fully integrated Gaggenau appliance packages and sleek Kohler fixtures.

← Built-in closets with integrated LED lighting blend seamless organization with an elegant flair, elevating the ambiance of the bedrooms.



SEASIDE SCHEME

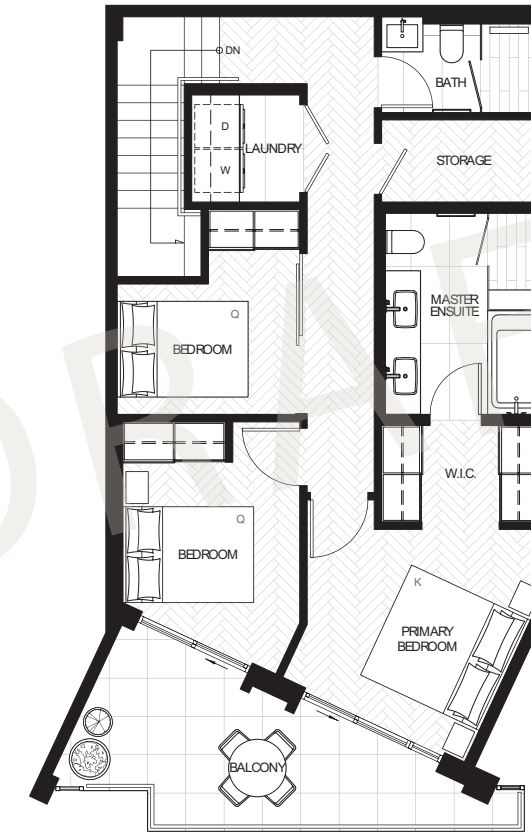
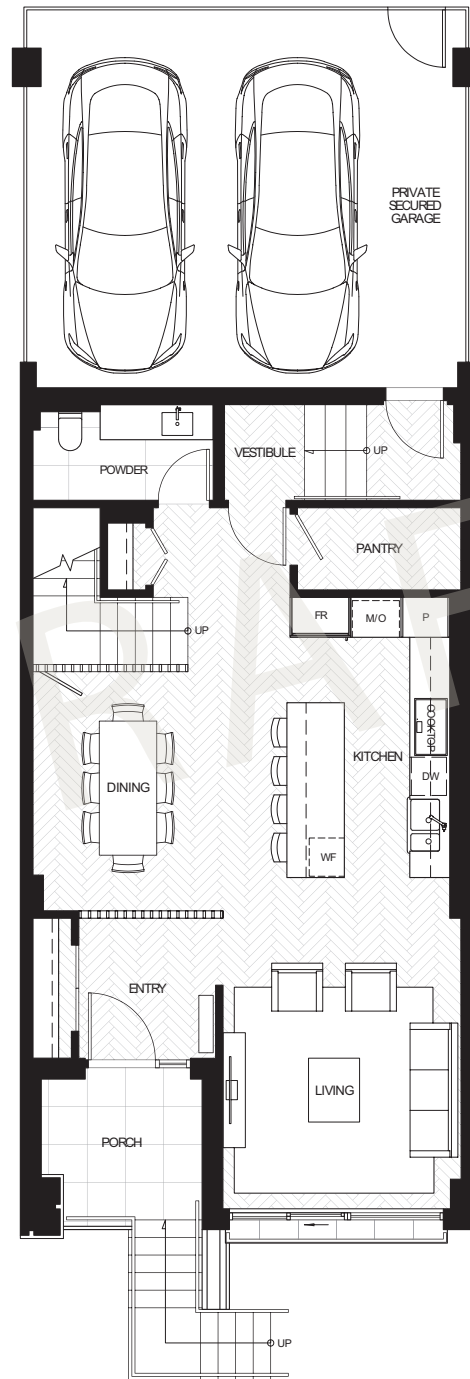


WEST COAST ARTS & CRAFTS SCHEME

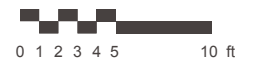
Beachside Home 3

JUNIOR 3 BEDROOM, 3 BATH

INTERIOR	EXTERIOR	TOTAL
1734 SQ FT	182 SQ FT	1916 SQ FT



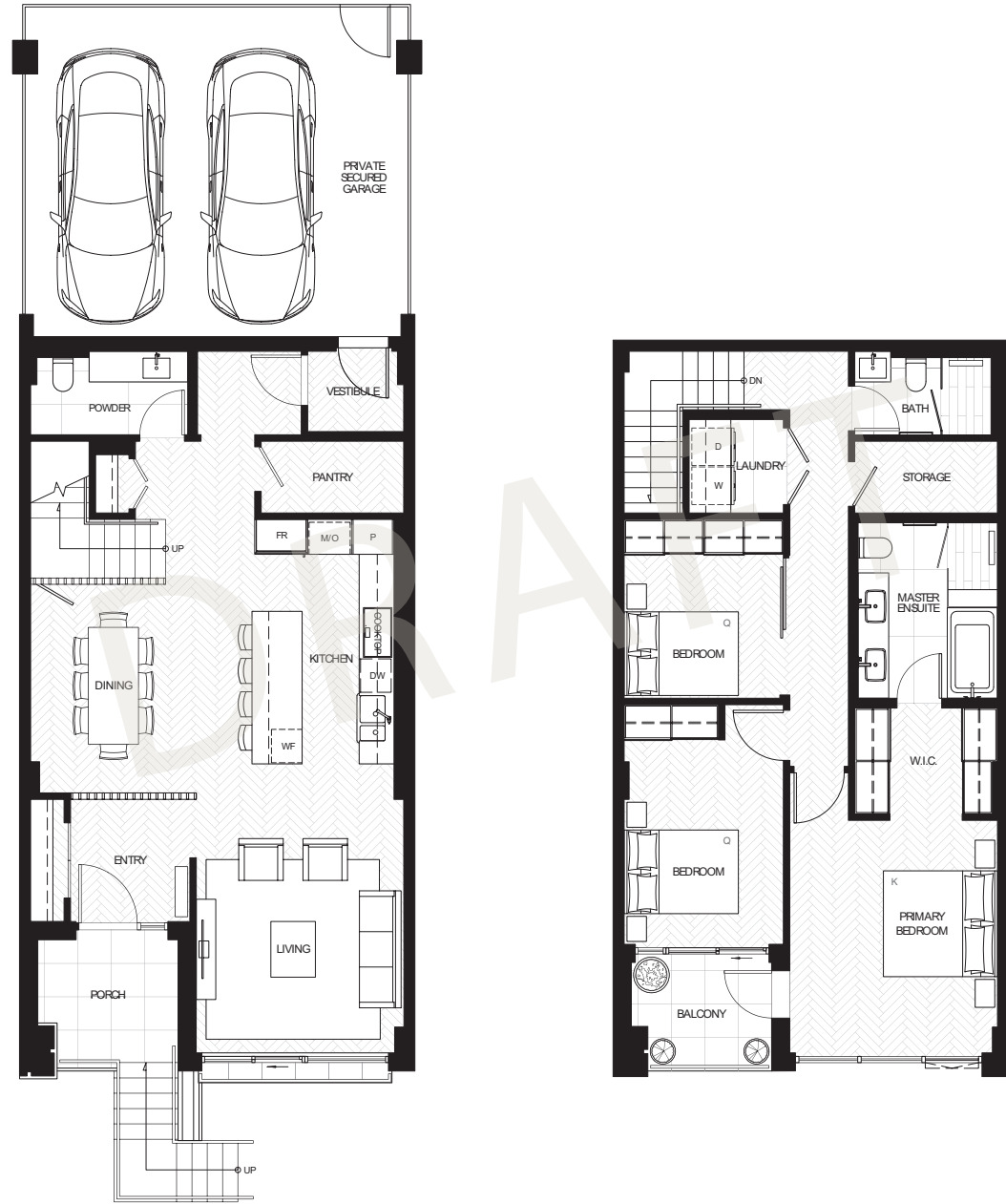
Developer reserves the right to make modifications to the floorplans, areas, unit numbers, and/or specifications without notice. Actual floorplans may be mirror image or have minor variations from the illustrations above. Views may include building architectural features/measurements are based on architectural areas and are not taken from the strata plan. This is not an offering for purchase. Any such offering can only be made with a Disclosure Statement. E&OE.



Beachside Home 6

2 BEDROOM + DEN, 3 BATH

INTERIOR	EXTERIOR	TOTAL
2090 SQ FT	100 SQ FT	2190 SQ FT



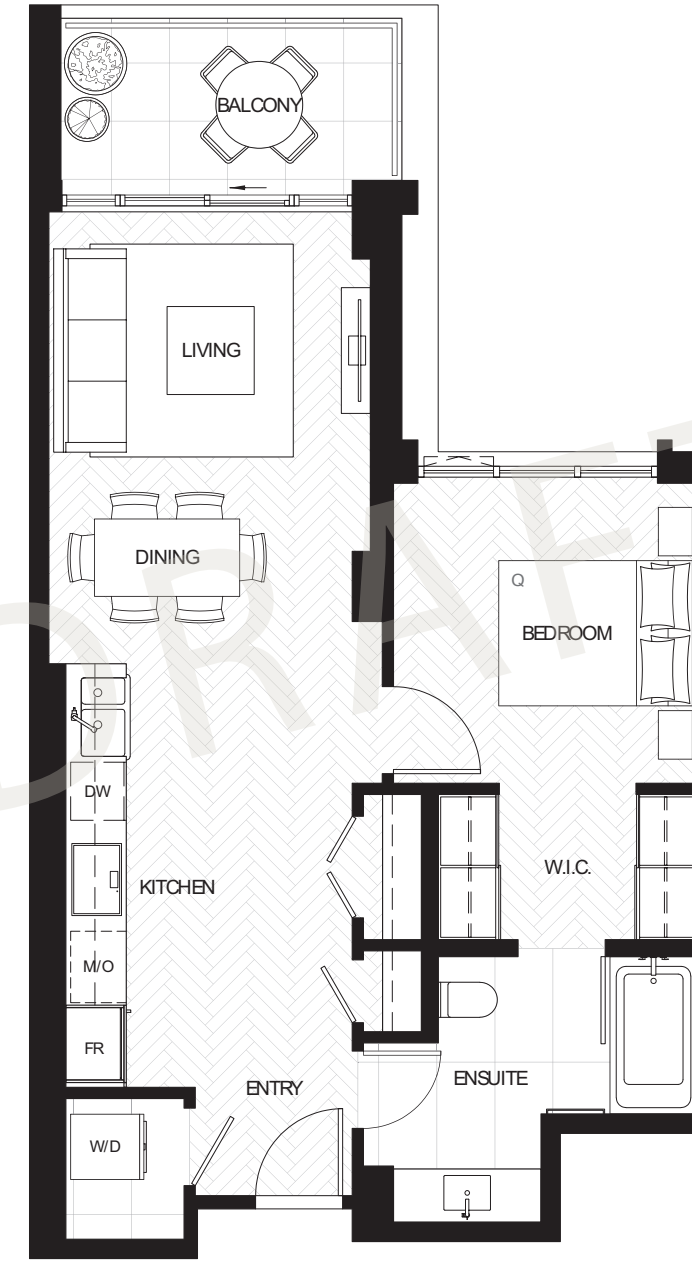
Developer reserves the right to make modifications to the floorplans, areas, unit numbers, and/or specifications without notice. Actual floorplans may be mirror image or have minor variations from the illustrations above. Views may include building architectural features/measurements are based on architectural areas and are not taken from the strata plan. This is not an offering for purchase. Any such offering can only be made with a Disclosure Statement. E&OE.



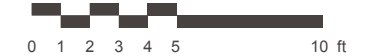
Condo B1-A

1 BEDROOM, 1 BATH

INTERIOR	EXTERIOR	TOTAL
691 SQ FT	57 SQ FT	748 SQ FT



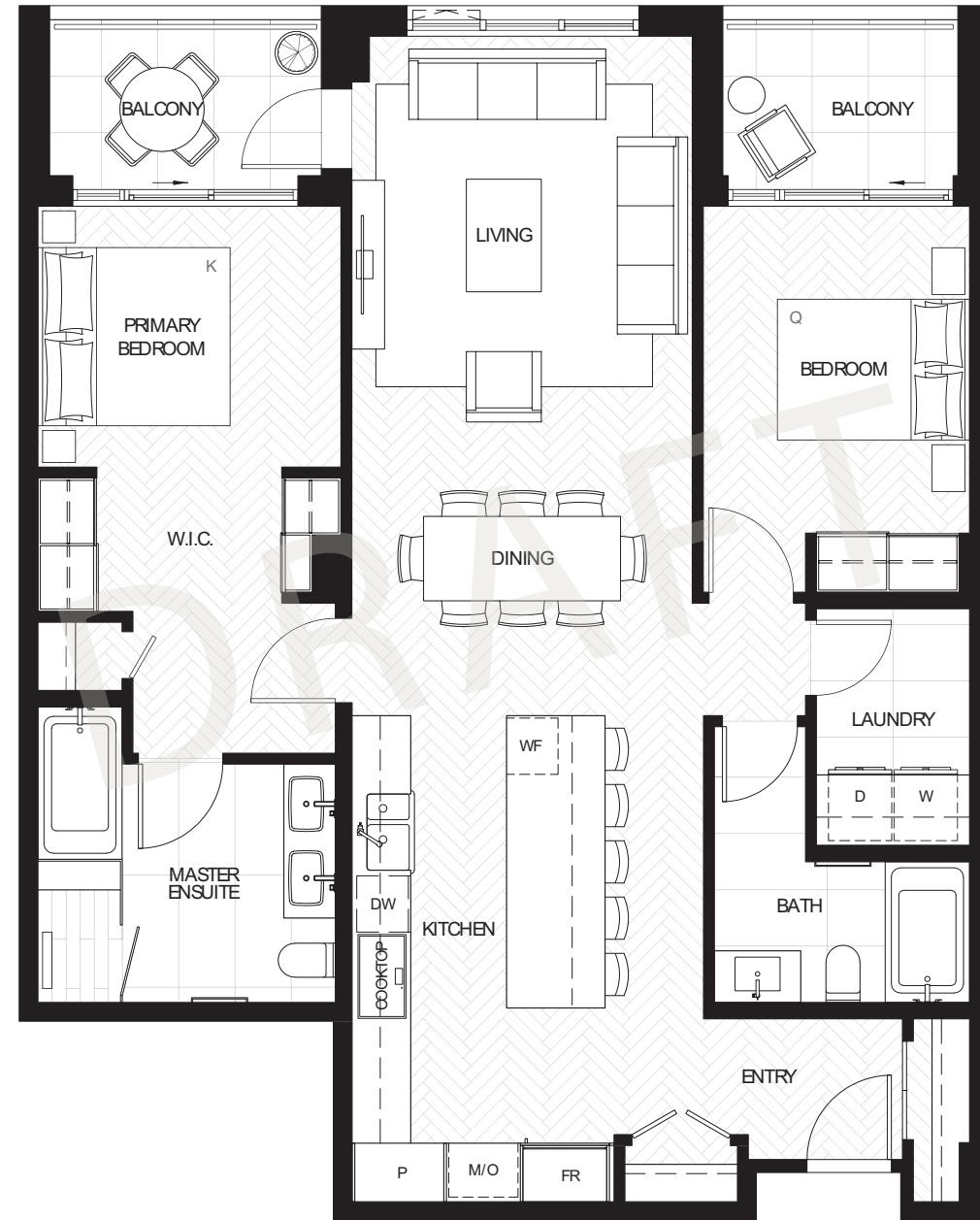
Developer reserves the right to make modifications to the floorplans, areas, unit numbers, and/or specifications without notice. Actual floorplans may be mirror image or have minor variations from the illustrations above. Views may include building architectural features/measurements are based on architectural areas and are not taken from the strata plan. This is not an offering for purchase. Any such offering can only be made with a Disclosure Statement. E&OE.



Condo C1-A

2 BEDROOM, 2 BATH

INTERIOR	EXTERIOR	TOTAL
1201 SQ FT	85 SQ FT	1286 SQ FT



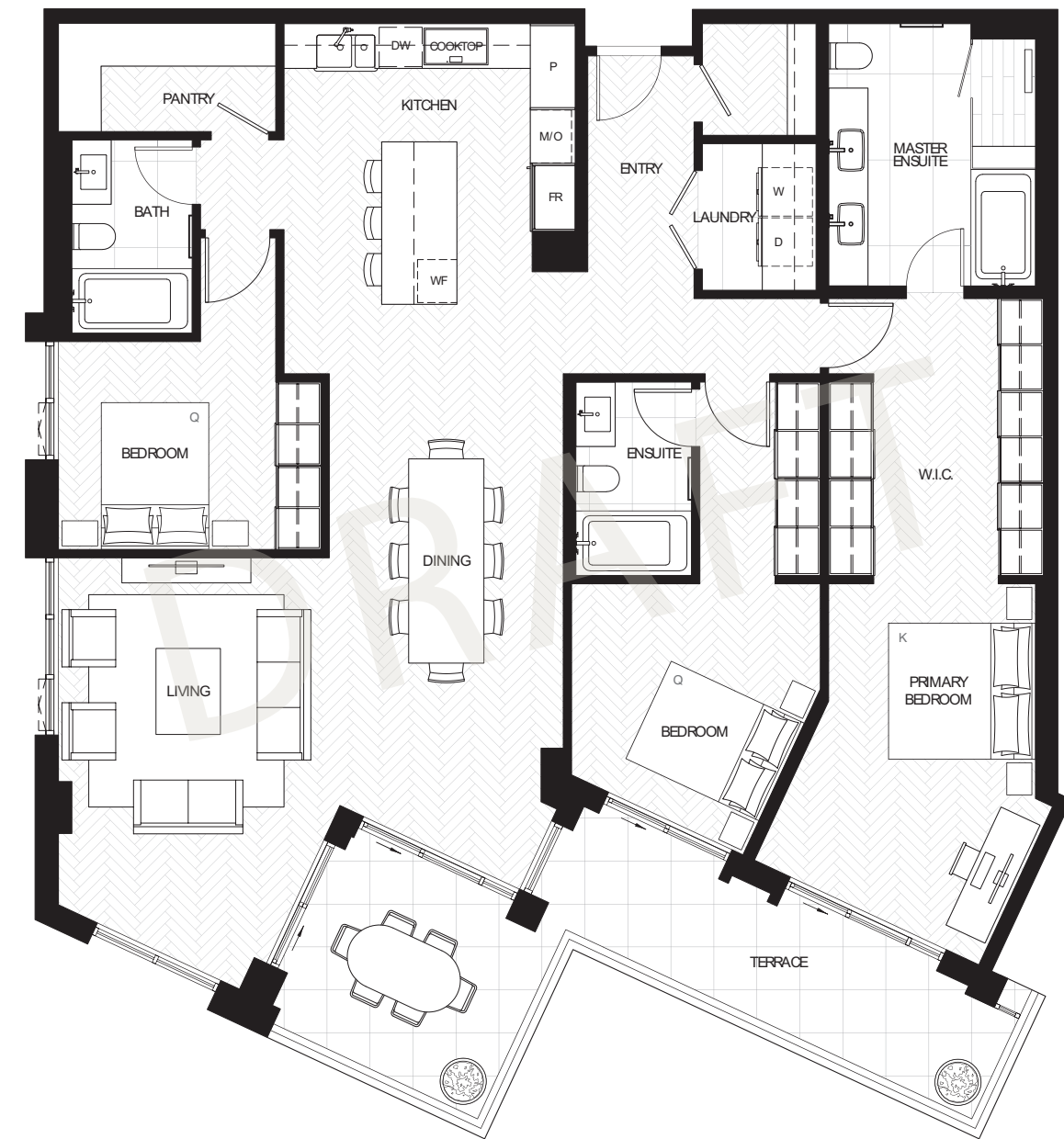
Developer reserves the right to make modifications to the floorplans, areas, unit numbers, and/or specifications without notice. Actual floorplans may be mirror image or have minor variations from the illustrations above. Views may include building architectural features/measurements are based on architectural areas and are not taken from the strata plan. This is not an offering for purchase. Any such offering can only be made with a Disclosure Statement. E&OE.



Condo D7

3 BEDROOM, 3 BATH

INTERIOR	EXTERIOR	TOTAL
1889 SQ FT	206 SQ FT	2095 SQ FT



Developer reserves the right to make modifications to the floorplans, areas, unit numbers, and/or specifications without notice. Actual floorplans may be mirror image or have minor variations from the illustrations above. Views may include building architectural features/measurements are based on architectural areas and are not taken from the strata plan. This is not an offering for purchase. Any such offering can only be made with a Disclosure Statement. E&OE.



TEAM

Crafting Dundarave's Next Chapter Together

SWISSREAL GROUP

For over four decades, SwissReal has been a transformative force in BC's real estate landscape. In the heart of downtown Vancouver, they brought to life The Exchange, a spacious 372,000 sq. ft. LEED Platinum building, combining heritage with sleek office areas and a premium hotel experience. And in Maple Ridge, they have crafted a landmark at ERA 1, 200 homes in the initial phase of a meticulously planned seven-phase community. Quality and vision come together, again and again.

BRIMMING DEVELOPMENT

Brimming connects people to their homes and to their communities, delivering only excellence and aiming to exceed expectations in everything they do. They build homes with high-quality and integrity, and take pride in detail-oriented, down-to-earth professionalism. As a hands-on developer, they walk through every floor plan of every property to ensure their homes enhance lives and enrich communities.



WWW.SWISSREAL.COM



WWW.BRIMMINGDEVELOPMENT.COM

rennie

PIERWELL.CA

This is not an offering for sale. Any such offering can only be made with a disclosure statement. Prices are subject to change without notice. The developer reserves the right to make changes and modifications to the information contained herein without prior notice. Dimensions, sizes, areas, specifications layout and materials are approximate only and subject to change without notice. Artist's renderings and maps are representations only and may not be accurate. E.&O.E.



PIERWELL.CA