

BASSANO

by Boffo

A Family Passion with Italian Origins

Boffo Developments has built a solid reputation and a loyal following over 50 years. We've achieved this by designing and building homes for a truly exceptional homeowner experience. An obsession for detail is inherent in every Boffo home, and our disciplined attention to design results in a very unique brand of livability.

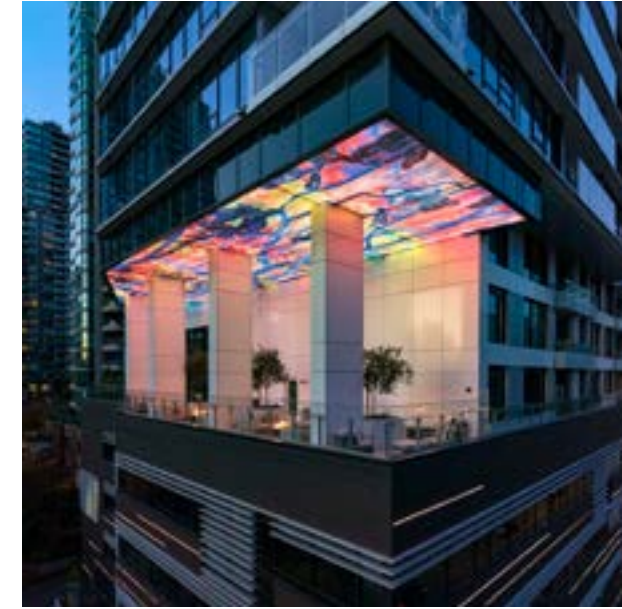
Every Boffo community is built intentionally, with a longterm legacy in mind - not just our own, but for that of our homeowners. To protect that legacy, we continue to care for our buildings long after they are built - as everything we build is a reflection of who we are.



SMITH & FARROW
West Coquitlam



THE SMITHE
Downtown Vancouver



ARTEMISIA
Downtown Vancouver



MODELLO
Metrotown, Burnaby



JEWEL I & II
Metrotown, Burnaby



Your Village Within a Greater Landscape



Downtown
Vancouver

Brentwood
Town Centre

BASSANO

Burnaby
Heights

Holdom
Station

A Colourful Burnaby Community

Bassano rises from a pocket of Burnaby that is closely connected to the energy and amenities of a growing city - while maintaining a sense of tranquility within. This walkable neighbourhood on the cusp of Brentwood is a desirable urban environment for families.

Become familiar with the culture, conveniences and nature in every direction.



GREEN SPACE

Nature is a captivating companion through the seasons — walk amongst the trees in local greenways.



RECREATION

Pursue an active lifestyle. Journey through the network of bike paths or row across the lake.



Lifestyle Thrives at Brentwood Town Centre



CONNECT TO PLACES HERE AND THERE
Enjoy the ease of commuting and exploring, with Holdom SkyTrain station a four-minute walk away.



01

01
LA TAQUERIA
Savour casual dinners with friends.

02
H&M HOME
Outfit your home with décor expressive of you.

03
SMALL VICTORY
Treat yourself to simple pleasures.

04
JINYA RAMEN BAR
Taste the flavours of a diverse community.



03

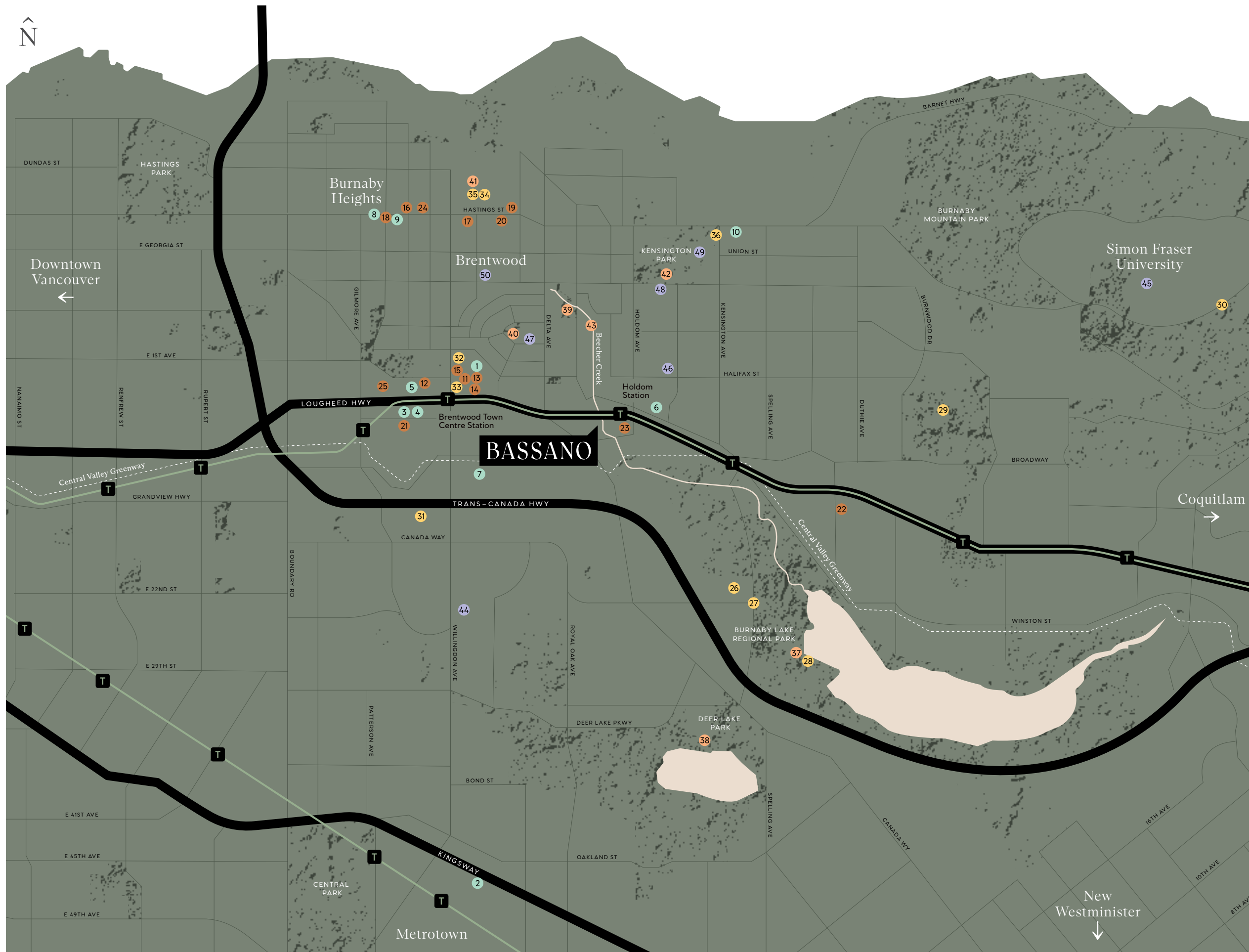


02



04

B



SHOPPING

- 1 Brentwood Town Centre
- 2 Metropolis At Metrotown
- 3 Whole Foods Market
- 4 Shoppers Drug Mart
- 5 Save-on-foods
- 6 Buy-low Foods
- 7 Costco
- 8 Cioffi's Meat Market & Deli
- 9 Fortuna Bakery
- 10 Kensington Square Shopping Centre

FOOD & BEVERAGE

- 11 Earls Kitchen + Bar
- 12 Joey Burnaby
- 13 JINYA Ramen Bar
- 14 OEB Breakfast Co.
- 15 Small Victory Bakery
- 16 JJ Bean Coffee Roasters
- 17 Gabi & Jules
- 18 The Gray Olive Cafeteria
- 19 Chez Christophe
- 20 Nuvola Gelato & Dolci
- 21 Claudio's Ristorante
- 22 Wild Flour Pizza Co
- 23 Starbucks
- 24 Caffè Artigiano
- 25 Cactus Club Cafe

ACTIVITIES

- 26 Burnaby Lake Sports Venues
Scotia Barn, Bill Copeland, C.S. Community Centre
- 27 Burnaby Tennis Club
- 28 Burnaby Lake Rowing Pavilion
- 29 Burnaby Mountain Golf Course & Driving Range
- 30 Burnaby Mountain Biking and Hiking Trails
- 31 Grand Villa Casion Hotel & Conference Centre
- 32 Cineplex VIP Cinemas Brentwood
- 33 The Rec Room
- 34 Burnaby Public Library (McGill)
- 35 Eileen Daily Leisure Pool & Fitness Centre
- 36 Kensington Park Outdoor Pool

PARKS & RECREATION

- 37 Burnaby Lake Regional Park
- 38 Deer Lake Park
- 39 Beecher Park
- 40 Brentwood Park
- 41 Confederation Park
- 42 Kensington Park
- 43 Beecher Creek

EDUCATION

- 44 British Columbia Institute of Technology
- 45 Simon Fraser University
- 46 Parkcrest Elementary
- 47 Brentwood Park Elementary School
- 48 Aubrey Elementary
- 49 Burnaby North Secondary School
- 50 École Alpha Secondary School



An Open Invitation to Explore

The thoughtful community of four towers echoes a boutique experience. Lush pathways wind between the buildings, connecting shared park spaces and offering moments within nature. Elegant homes and amenities nurture wellbeing and belonging, with beauty and simplicity flowing throughout.





Artist Rendering

NORTH BURNABY

Between city and residential, urban amenities and natural landscapes, Bassano's location calibrates life into equilibrium.



Discover Bassano

Bassano's first tower strikes a chord on the skyline. Designed by Arcadis, 318 homes and a multitude of amenities ascend 43 storeys in a dramatic form of warm metal panel, bold dark stone, and expansive glass, reflecting the surrounding city and mountains. Like all Boffo projects, livable space is the foundation – with architecture designed from the inside out.



A Vivid Portrait of Livability Expressed Seamlessly Indoors and Out

At its heart, livability is when the rhythm of everyday life harmonizes with the built environment. An array of indoor and outdoor landscapes are a must. Quiet corners. Social enclaves. Fresh air and greenery. Warmth. Places where you feel satiated whether alone or with others. Spaces that offer different experiences that speak to health, belonging, and the basic practicalities of life.



Artist Rendering

THE STRIKING PRESENCE OF HOME

The arrival experience at Bassano is one of refinement. The entry's double-height façade is framed with majestic stone, a stately column encased in metal panels, and a warmly lit canopy. It's a sophisticated welcome for residents and guests alike.





Artist Rendering

THE LOBBY LOUNGE

Elegant European design elevates the experience of coming home. Less passageway and more living room. The Lobby Lounge is a purposeful landing.



Artist Rendering

WELCOME HOME

Furthering the hotel atmosphere, an opulent chandelier identifies the reception. A professional concierge is an assuring presence for you and your visitors, conveying security and ease.



Artist Rendering

MOMENTS FOR FOCUS

Harness creative energy in a flexible space designed for both concentration and collaboration. The Work-share Lounge creates separation between the sanctuary of your private home and the practicalities of work.



THE FAMILY LOUNGE

The Family Lounge expresses the essence of Bassano — togetherness. Family holidays and celebrations amongst friends transpire across a long table, with beautiful views of outdoor greenery.



Artist Rendering

ANCHORED IN TRADITIONS
Exchange stories and form memories as you dine, lounge, and play.



Artist Rendering

RELAX TOGETHER
Collectively appreciate film, sport, or other cultural entertainment within a cozy viewing enclave.





Artist Rendering

AL FRESCO AURA

Like an Italian piazza, the terrace will buzz with community — together in small, leisurely groups or for large, festive meals.



Artist Rendering

THE SPIRIT OF PLAY

Enjoy pockets for quiet connection, play structures for imaginative children, and a bocce court for revelry.



Artist Rendering

FULLY-EQUIPPED

The Health Club offers numerous ways to experience renewal. Various cardio machines and weight-training equipment invite you to tailor your workouts.



Artist Rendering

LIFE BALANCE

A versatile yoga and barre studio overlooks the garden, combining tranquil nature with movement and meditation.



Artist Rendering

INFRARED SAUNA
Light penetrates the skin for a therapeutic full-body effect.



STEAM ROOM
Enveloped by stone, surrender to the purifying sensation of steam.

Artist Rendering





AT BRILLIANT HEIGHTS

A wraparound terrace reveals several places to admire the view — by the firepit, on a lounge chair, or perched on a planter bench.



Artist Rendering

ELEVATED JOY

Craft cocktails and other treats accompany laughs and memories.



UPLIFTED ATMOSPHERE

Ascend the building to the private residents' club, with distinctive furnishings and extravagant views.

Artist Rendering



Italy Comes to Life at Home

Bassano homes reflect Boffo's unwavering commitment of unparalleled craftsmanship. Boffo has procured many of their materials and finishes directly from Italy, to create an authentic Italian homeowner experience. Imported custom cabinetry and built-in wardrobe systems, full-size Bertazzoni appliance package, Gessi kitchen and bathroom fixtures and dramatic backsplash slabs are all imported from Italy.

features

BOFFO CRAFTSMANSHIP

EXCEPTIONALLY DESIGNED HOMES | GENEROUS OUTDOOR LIVING SPACES | THOUGHTFUL STORAGE SOLUTIONS | IMPORTED ITALIAN CUSTOM CABINETRY
BUILT-IN ITALIAN WARDROBE SYSTEMS WITH INTEGRATED LED LIGHTING | GESSI KITCHEN + BATHROOM FIXTURES FROM ITALY | SIGNATURE BOFFO ENTRY NICHE
CONTEMPORARY ROLLER WINDOW SHADES THROUGHOUT | WIDE-PLANK EUROPEAN FLOORING THROUGHOUT | OVER-HEIGHT 7-FOOT DOORS | 9-FOOT CEILINGS | AIR CONDITIONING

SPACIOUS ITALIAN KITCHENS

CABINETRY FROM ITALY | GENEROUS STORAGE, PANTRY + WORK SPACES | PREMIUM PULL-OUT CORNER CABINETRY | RECESSED LED UNDER-CABINET LIGHTING
FLEXIBLE OPTIONS FOR DINING TABLE + KITCHEN ISLAND | WINDOW KITCHENS | STUNNING ITALIAN SLAB DISPLAY WALLS WITH OPEN + CLOSED STORAGE
ITALIAN BERTAZZONI APPLIANCES INTEGRATED WITH CABINETRY | 30" REFRIGERATOR + 30" CONVECTION OVEN + GAS COOKTOP | 27" SINGLE-BOWL SINK WITH GESSI FAUCET

ELEGANT BATHROOMS

HEATED ENSUITE FLOORS | FLOATING CUSTOM ITALIAN VANITIES WITH UNDER-CABINET LIGHTING | AMPLE STORAGE + CABINETRY DRAWERS
MULTI-PANELED VANITY MIRRORS WITH INTEGRATED LIGHTING + EXPANSIVE MEDICINE CABINETS | MATTE BLACK OR POLISHED CHROME ITALIAN GESSI FIXTURES
BUILT-IN SHOWER + BATHTUB NICHE

SPACE TO ENTERTAIN

OVER 18,000 SQFT OF INDOOR AMENITY SPACE | FAMILY LOUNGE | CATERING KITCHEN + DINING EXTENDING TO 1,600 SQFT COVERED OUTDOOR LOUNGE + BBQ STATIONS
MULTI-PURPOSE MEDIA ROOM | INDOOR + OUTDOOR CHILDRENS PLAY AREAS | EXPANSIVE OUTDOOR PARK STRETCHING OVER 23,000 SQFT FOR MASTER COMMUNITY | BOCCE COURT
43RD LEVEL ROOFTOP LOUNGE WITH 3,800 SQFT TERRACE + PANORAMIC VIEWS | TWO GUEST SUITES

EVERYDAY CONVENIENCES

HOTEL-STYLE ENTRANCE WITH PORTE COCHERE PICK-UP + DROP-OFF | FULL-SERVICE CONCIERGE | WORK-SHARE LOUNGE | SMART PARCEL STORAGE LOCKERS
EXTENSIVE BIKE FACILITIES INCLUDING BIKE ELEVATOR + REPAIR ROOM | EV CHARGING CAPACITY FOR ALL PARKING STALLS | OUTDOOR DOG RUN | PET WASH + GROOMING ROOM

THE HEALTH CLUB

FULLY-EQUIPPED FITNESS FACILITY | YOGA + BARRE STUDIO | INFRARED SAUNA | STEAM ROOM | CHANGE ROOMS + SHOWERS

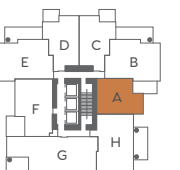
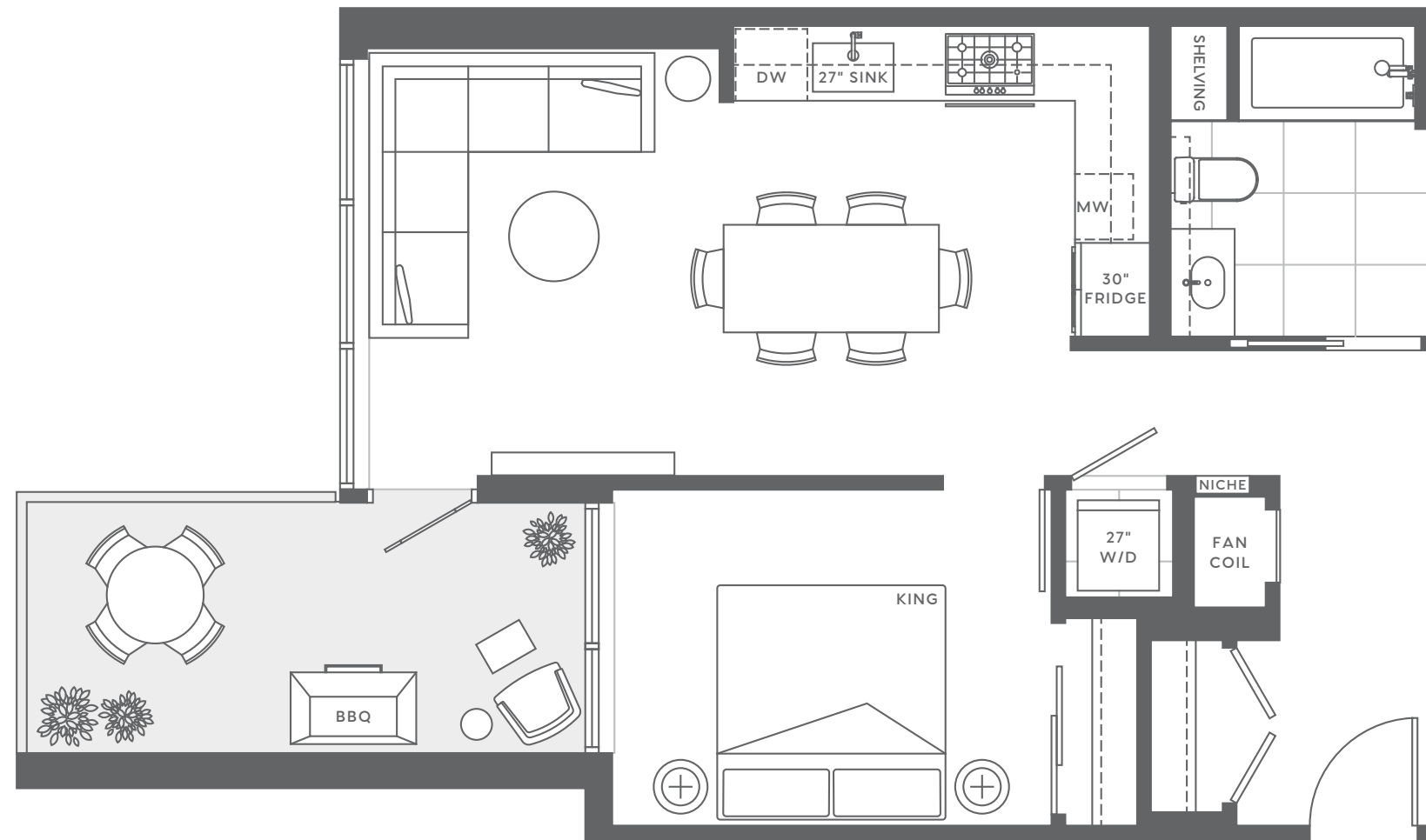




1 Bedroom 1 Bathroom

INDOOR 658 SQFT
OUTDOOR 119 SQFT
TOTAL 777 SQFT

DRAFT

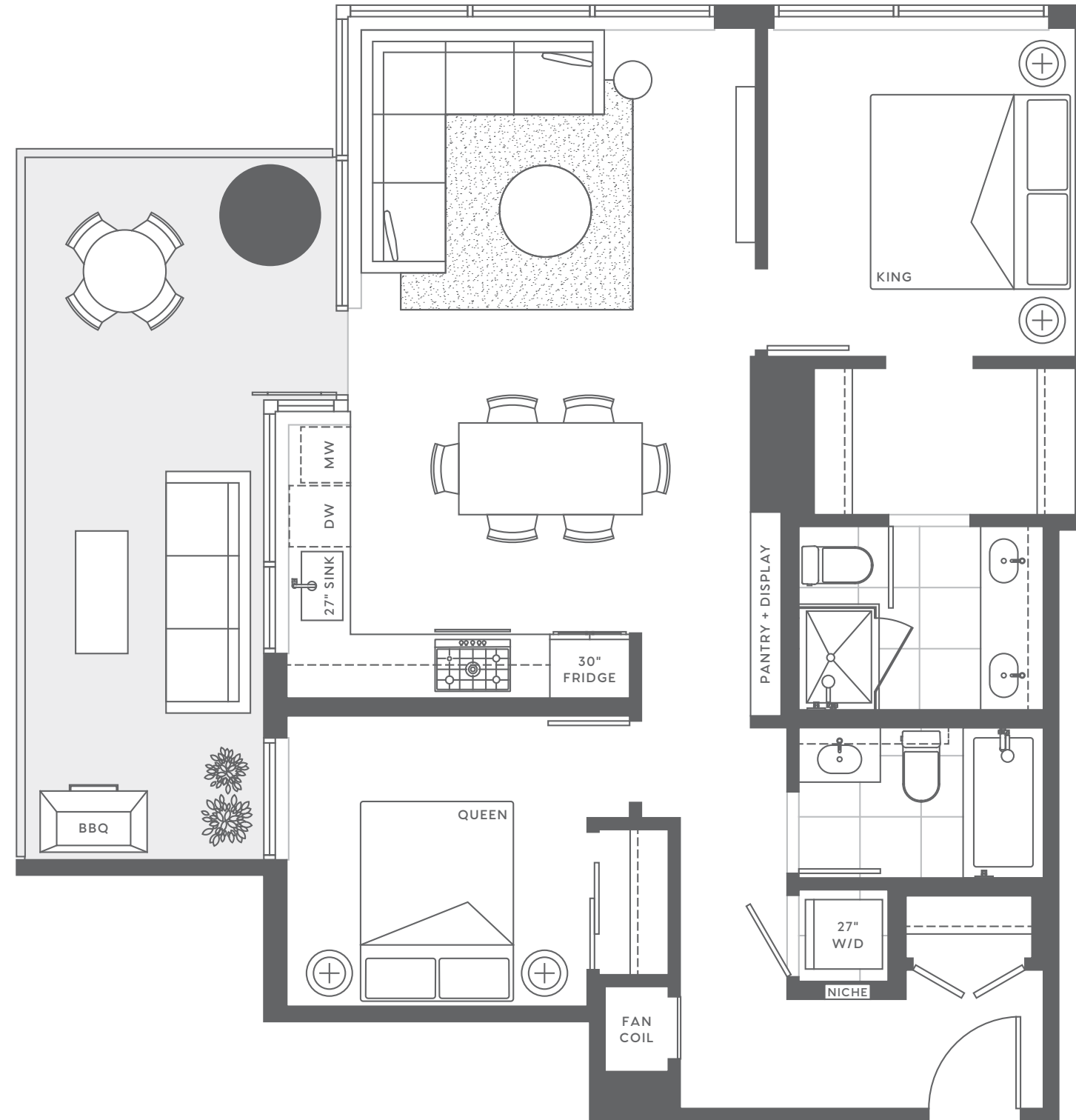


B

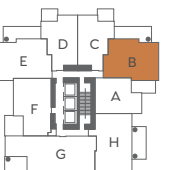
2 Bedroom 2 Bathroom

INDOOR 902 SQFT
OUTDOOR 207 SQFT
TOTAL 1,109 SQFT

DRAFT



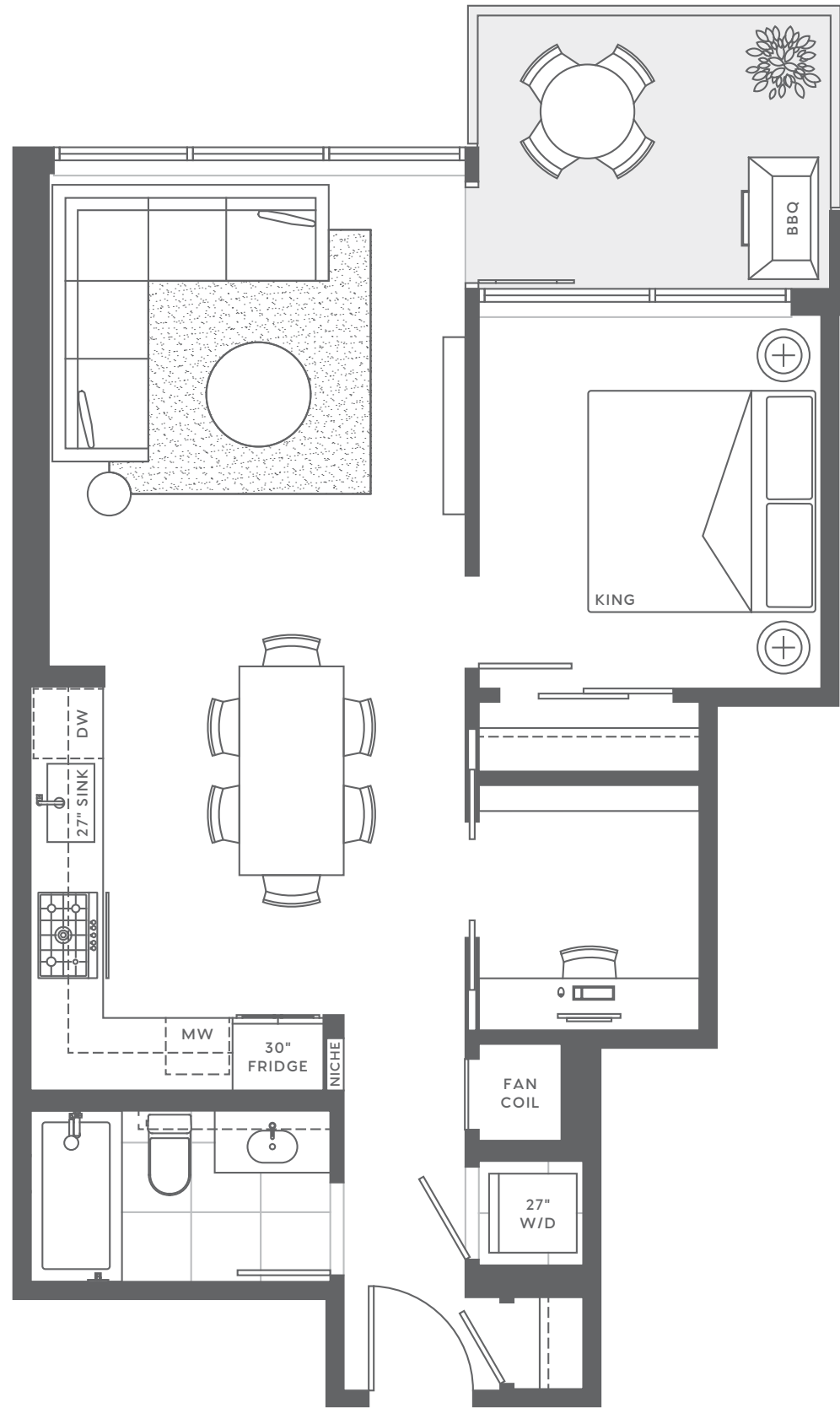
LEVEL 4-42



C

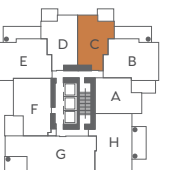
1 Bedroom + Den 1 Bathroom

INDOOR 679 SQFT
OUTDOOR 82 SQFT
TOTAL 761 SQFT



DRAFT

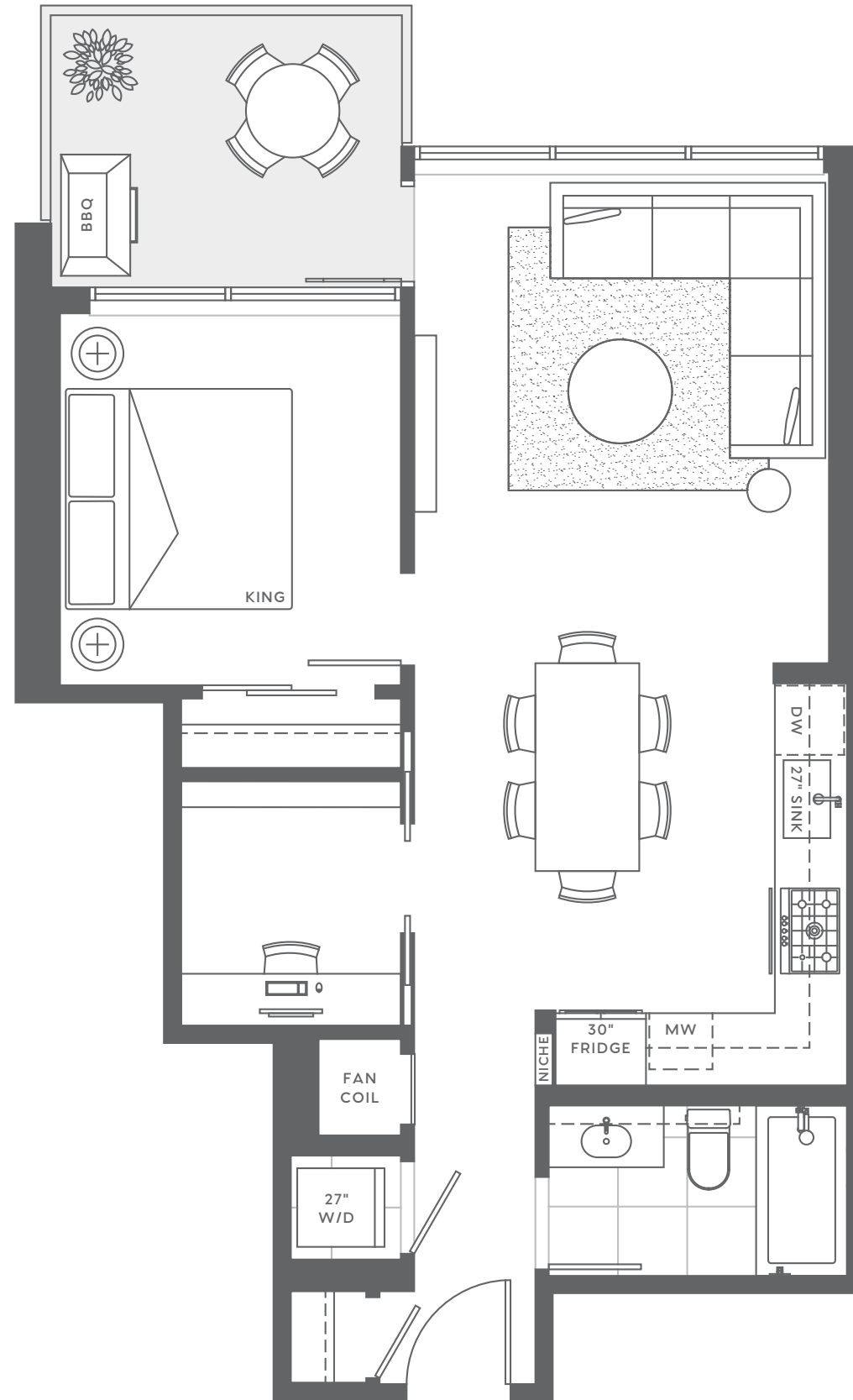
LEVEL 4-42



D

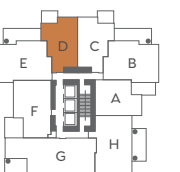
1 Bedroom + Den 1 Bathroom

INDOOR 681 SQFT
OUTDOOR 82 SQFT
TOTAL 763 SQFT



DRAFT

LEVEL 4-42

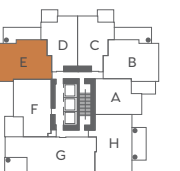
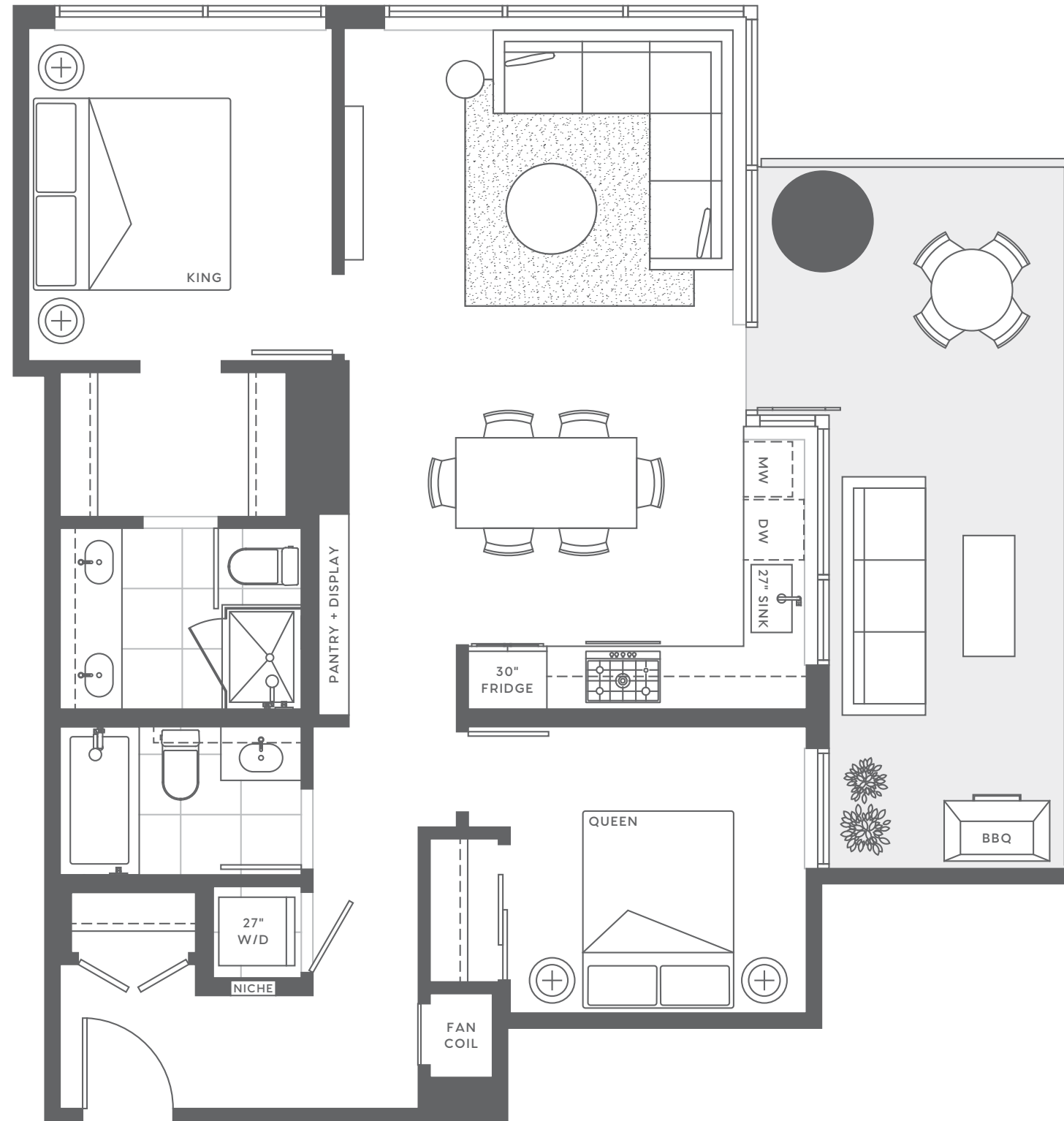


E

2 Bedroom 2 Bathroom

INDOOR 903 SQFT
OUTDOOR 210 SQFT
TOTAL 1,113 SQFT

DRAFT

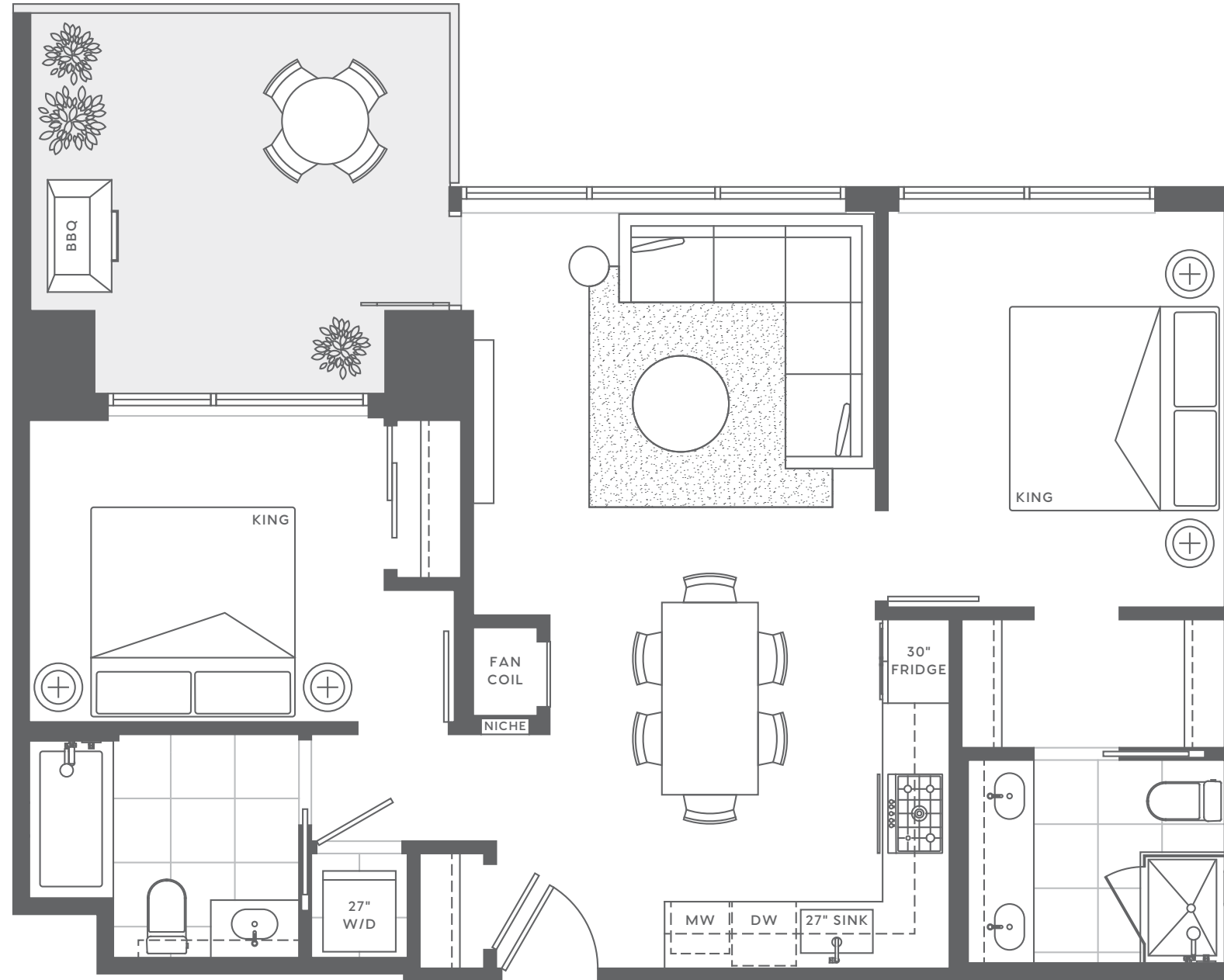


F

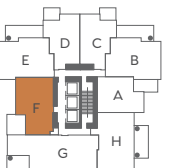
2 Bedroom 2 Bathroom

INDOOR 863 SQFT
OUTDOOR 157 SQFT
TOTAL 1,020 SQFT

DRAFT



LEVEL 6 - 42

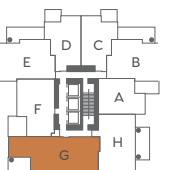
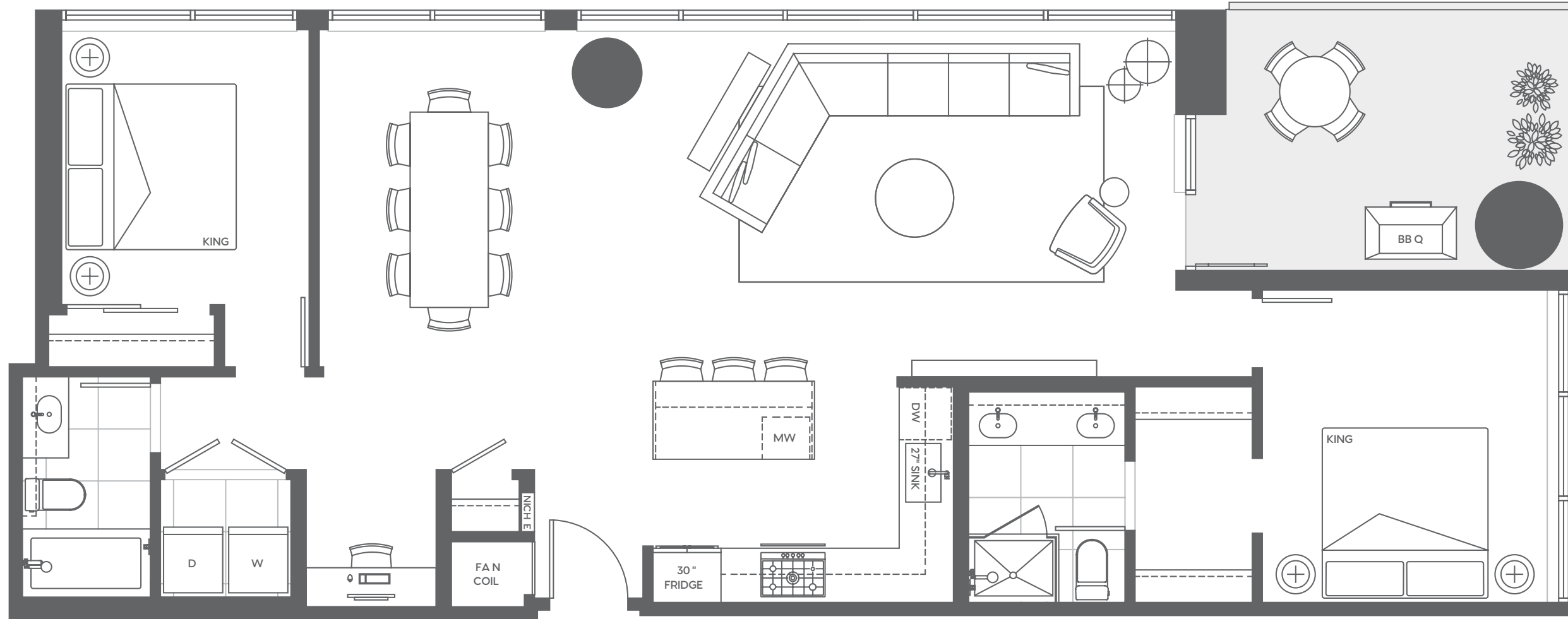




2 Bedroom + Den 2 Bathroom

INDOOR 1,234 SQFT
OUTDOOR 144 SQFT
TOTAL 1,378 SQFT

DRAFT

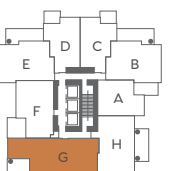
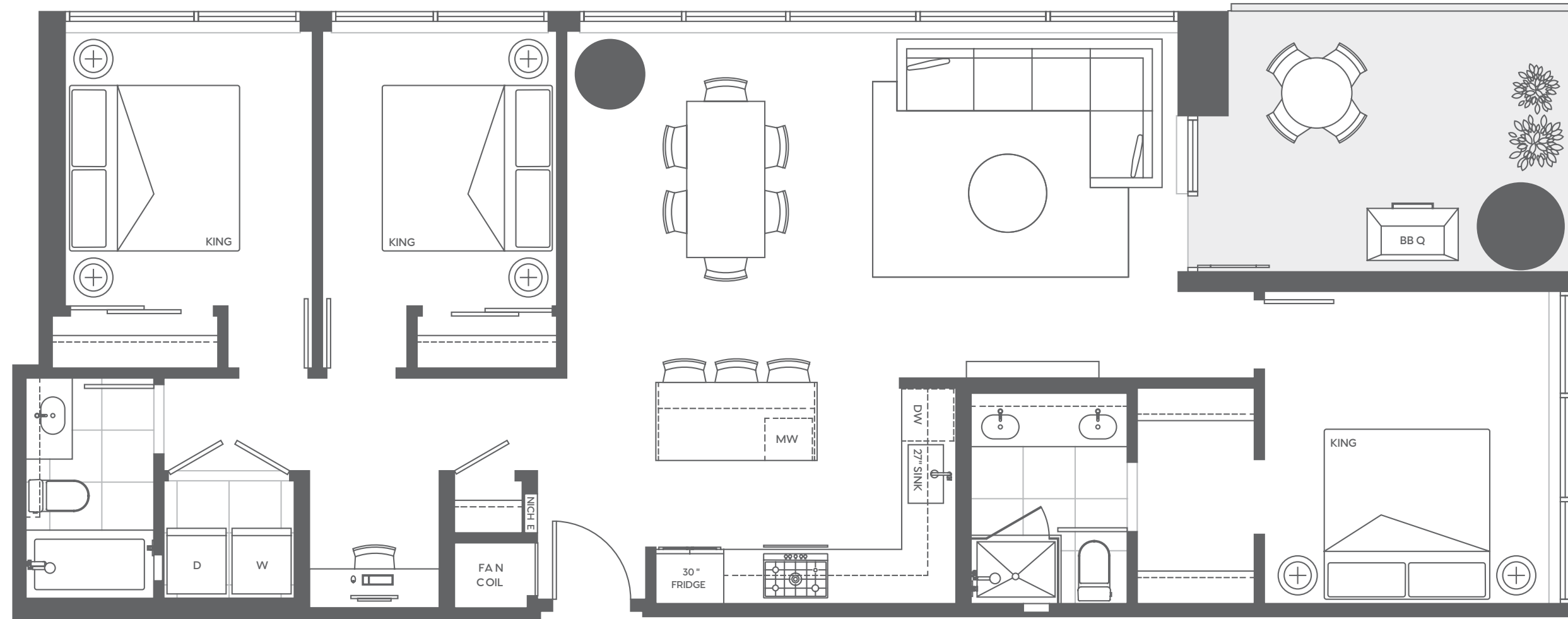


G3

3 Bedroom + Den 2 Bathroom

INDOOR 1,234 SQFT
OUTDOOR 144 SQFT
TOTAL 1,378 SQFT

DRAFT

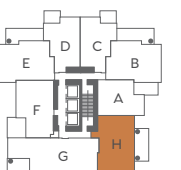
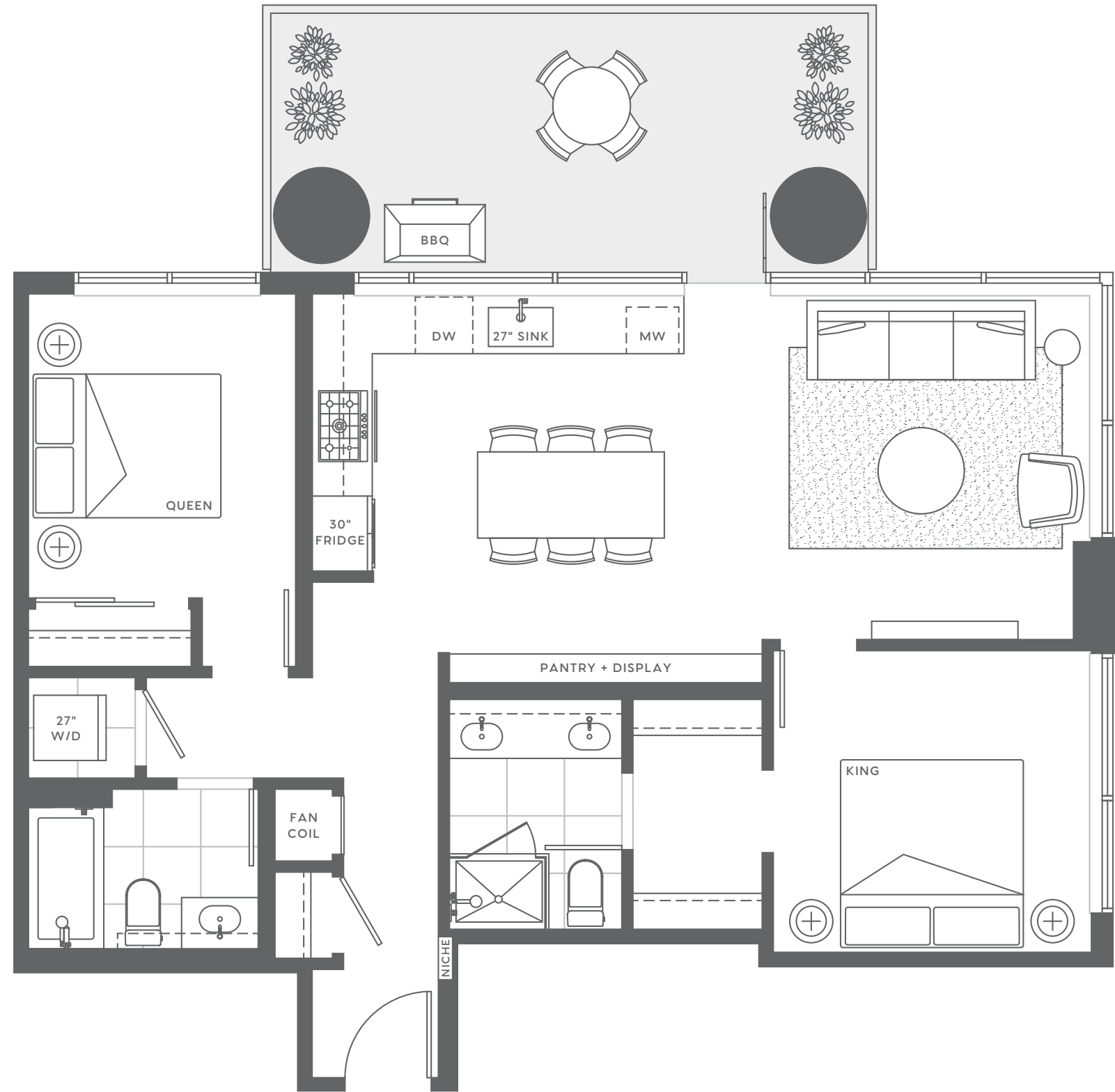


H

2 Bedroom 2 Bathroom

INDOOR 939 SQFT
OUTDOOR 191 SQFT
TOTAL 1,130 SQFT

DRAFT



MLA CANADA IS PROUD TO PARTNER WITH
BOFFO TO BRING BASSANO TO BURNABY.

PLEASE CONTACT OUR SALES TEAM TO LEARN MORE.

BassanoByBoffo.ca

604.456.0688

info@BassanoByBoffo.ca

ALICE CHUCK
MLA CANADA REALTY

778.246.2775
Alice@BassanoByBoffo.ca

KYLIE CHEN
MLA CANADA REALTY

604.779.3977
Kylie@BassanoByBoffo.ca

