



ALMASI<sup>™</sup>  
REAL  
ESTATE

The  
**Trails**  
Lower Lonsdale

**Now Selling in Lower Lonsdale**  
**2 & 3 Bedroom Townhomes**  
Prices Start in the \$800,000s



**604-440-5444**



# The Trails

## Life on The Trails Starts Here.

Embrace the West Coast aesthetic that seamlessly blends with modern conveniences, creating the perfect haven for your active lifestyle. Your home is more than just a place; it's an extension and expression of how you want to live.

### A NEIGHBOURHOOD RICH WITH AMENITIES

- Nestled in burgeoning community of Moodyville, just five minutes from Lonsdale Quay, The Trails is a gateway location within a master planned community where North Vancouver's urban pulse intersects with nature's tranquility
- Footsteps from Moodyville and Hamersley Parks and dove-tailed by the Spirit Trail, a 6.5 KM portion of the municipal collaboration that connects Horseshoe Bay to Deep Cove
- Experience culture and recreation in one vibrant hub. The Shipyards offer waterfront dining, festivities and artisan shops, while John Braithwaite Community Centre provides fitness facilities and community events
- Nurturing education within reach with Ridgeway and Queen Mary Elementary Schools, and St. Thomas Aquinas Regional Secondary

### DISTINCTIVELY NORTHSHORE

- Modern and contemporary Northshore architecture balancing weathered brick, glass and metal
- Blending North Vancouver's coastal rainforest, native plants and trees surround a scenically landscaped courtyard with meandering pathways, connected by overhead pedestrian skywalks
- Secured underground parking hardwired for Level 2 EV charging, bicycle storage, and storage lockers

### WELCOME HOME

- Radiant in-floor heating and ambient flush mount lighting in all homes
- Ground level patios and roof decks conveniently equipped with water bibs and gas outlets
- Open balconies, roof decks, and patios offer private retreats with select homes having stunning views of Vancouver Harbour, Downtown Vancouver and Stanley Park
- Open-concept interiors utilizing expansive windows and an abundance of natural light
- German engineered wide plank laminate flooring throughout all main living areas, bedrooms and hallways
- Long lasting low loop comfort carpeting on all staircases
- Shelving in entry, laundry and bedroom closets

- Modern roller shades for added privacy and light control
- Up to 13 foot vaulted ceilings in select homes

### KITCHENS DESIGNED FOR ENTERTAINING

- A collection of Samsung stainless smart appliances:
  - **33" French Door smart fridge with Family Hub™ touchscreen with built-in water filtration**
  - **36" 5-burner gas cooktop with Family Hub™**
  - **30" microwave/hood fan in select homes**
  - **24" dishwasher with Wi-Fi connectivity**
  - **Full size washer and dryer**
- 30" Faber slide-out hood fan in select homes
- Panasonic microwave with trim kit in select homes
- Modern and durable quartz countertops
- Timeless Herringbone kitchen backsplash tiles
- Flat panel cabinetry with soft-close hardware offers plenty of storage options
- Contemporary single basin stainless undermount kitchen sinks
- Matte black high arc faucet with pull down spray and kitchen hardware
- Warm-tone LED undermount cabinetry lighting

### BATHROOM RETREATS

- Porcelain floor tiles in powder rooms, ensuites, and main bathrooms
- Quartz countertops throughout with matte black faucets and fixtures
- Freestanding deep soaker tubs with hand-shower fixtures in select signature ensuite bathrooms
- Soaker tubs in main bathroom and glass-enclosed showers in primary ensuites

### PEACE OF MIND BEHIND EACH DOOR

- Developed and constructed by Wall Financial Corporation, having developed more than 30,000 homes in Metro Vancouver, including over 15,000 rental suites, thousands of single-family lots, over 10,000 condominiums and two major hotels
- Alfred programmable Bluetooth smart lock for a "true lock-and-go" lifestyle
- Comprehensive National Home Warranty 2-5-10 new home coverage:
  - **2-year coverage on labour and materials**
  - **5-year coverage on the building envelope**
  - **10-year coverage on structural**



TrailsLiving.com

The developer reserves the right to make modifications and changes to the building design, elevations, dimensions, specifications, features and prices, without prior notification. Decks, patios, stairs and windows may vary based on site conditions. All sizes and dimensions are approximate and based on architectural measurements. Reverse and/or mirror plans occur throughout the development. Please see disclosure for specific pricing details once available. This is not an offering for sale. E & O. E.

Wall  
FINANCIAL  
CORPORATION

Macdonald  
PLATINUM MARKETING

# The Trails

# A1

2 BEDROOM

2 Bath

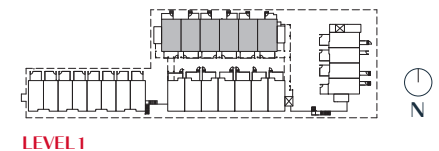
Interior: 753 - 756 SF

Outdoor: 222 - 235 SF

VARIATION OCCURS AT  
SUITES 141 & 146



**BUILDING C**  
**TOWNHOUSE: 141, 142, 143, 144, 145 & 146**



LEVEL 1

The developer reserves the right to make modifications and changes to the building design, elevations, dimensions, specifications, features and prices, without prior notification. Decks, patios, stairs and windows may vary based on site conditions. All sizes and dimensions are approximate and based on architectural measurements. Reverse and/or mirror plans occur throughout the development. Please see disclosure for specific offering details once available. This is not an offering for sale. E & O. E.

**Wall**  
FINANCIAL  
CORPORATION

**Macdonald**  
PLATINUM MARKETING

# The Trails

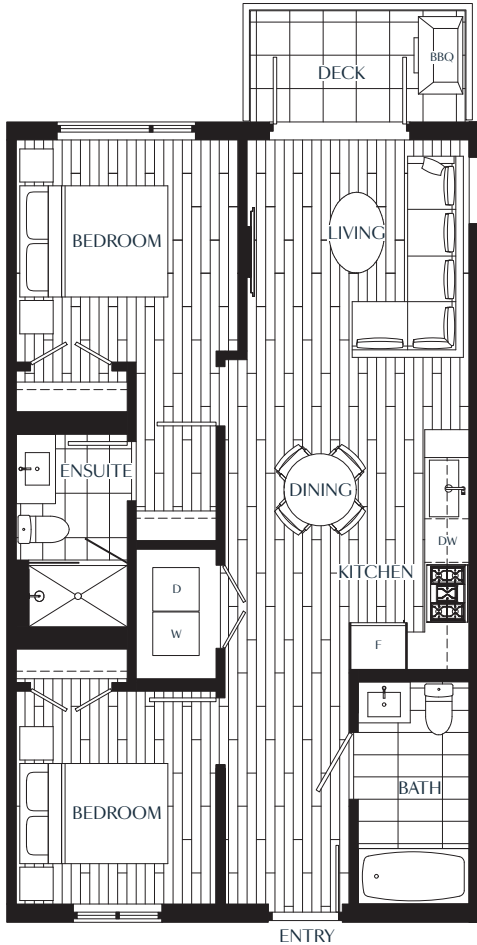
## A2

2 BEDROOM

2 Bath

Interior: 753 - 758 SF

Outdoor: 49 - 51 SF

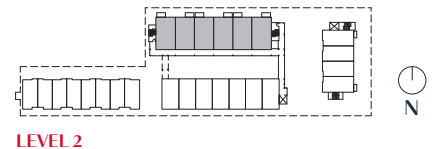


VARIATION OCCURS AT  
SUITES 241 & 246



**BUILDING C**

**TOWNHOUSE: 241, 242, 243, 244, 245 & 246**



**LEVEL 2**

The developer reserves the right to make modifications and changes to the building design, elevations, dimensions, specifications, features and prices, without prior notification. Decks, patios, stairs and windows may vary based on site conditions. All sizes and dimensions are approximate and based on architectural measurements. Reverse and/or mirror plans occur throughout the development. Please see disclosure for specific offering details once available. This is not an offering for sale. E & O. E.

**Wall**  
FINANCIAL  
CORPORATION

**Macdonald**  
PLATINUM MARKETING

# The Trails

## B1

2 BEDROOM + DEN

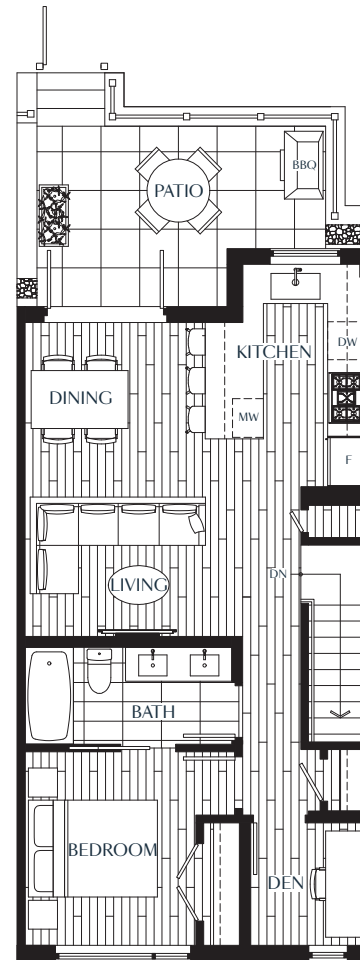
2 Bath

Interior: 981 - 1,003 SF

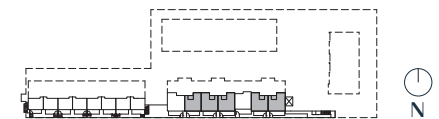
Outdoor: 211 - 235 SF



LOWER



MAIN



LEVEL G



**BUILDING E**

**TOWNHOUSE: 152, 153, 154, 156 & 157**

The developer reserves the right to make modifications and changes to the building design, elevations, dimensions, specifications, features and prices, without prior notification. Decks, patios, stairs and windows may vary based on site conditions. All sizes and dimensions are approximate and based on architectural measurements. Reverse and/or mirror plans occur throughout the development. Please see disclosure for specific offering details once available. This is not an offering for sale. E & O. E.

**Wall**  
FINANCIAL  
CORPORATION

**Macdonald**  
PLATINUM MARKETING

# The Trails

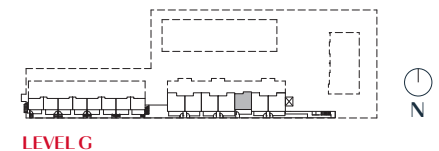
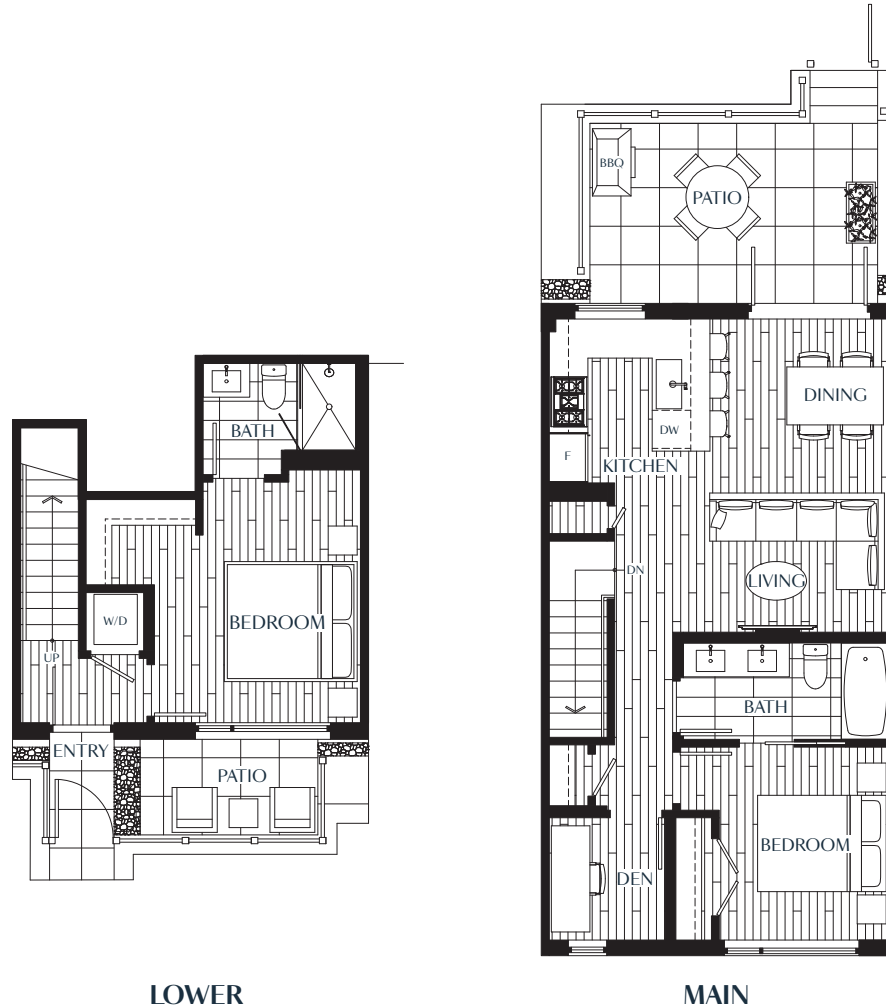
## B1a

2 BEDROOM + DEN

2 Bath

Interior: 955 SF

Outdoor: 250 SF



**BUILDING E**  
**TOWNHOUSE: 155**

The developer reserves the right to make modifications and changes to the building design, elevations, dimensions, specifications, features and prices, without prior notification. Decks, patios, stairs and windows may vary based on site conditions. All sizes and dimensions are approximate and based on architectural measurements. Reverse and/or mirror plans occur throughout the development. Please see disclosure for specific offering details once available. This is not an offering for sale. E & O. E.

**Wall**  
FINANCIAL  
CORPORATION

**Macdonald**  
PLATINUM MARKETING

# The Trails

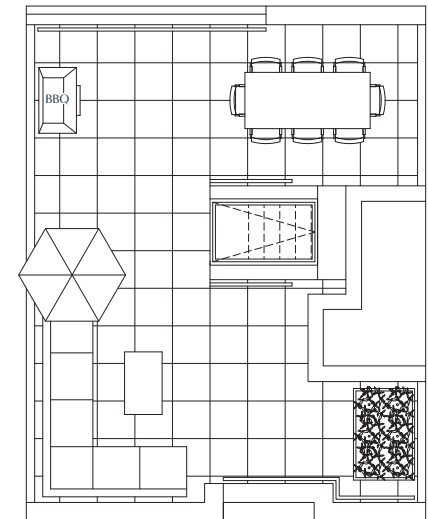
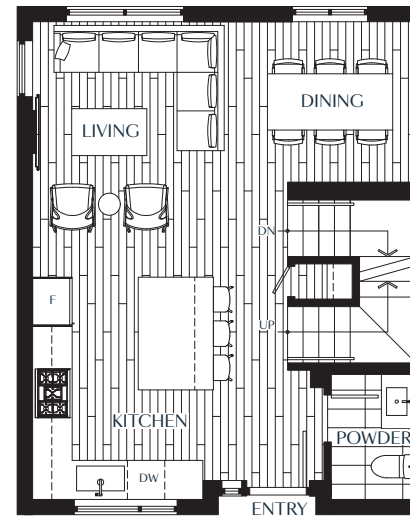
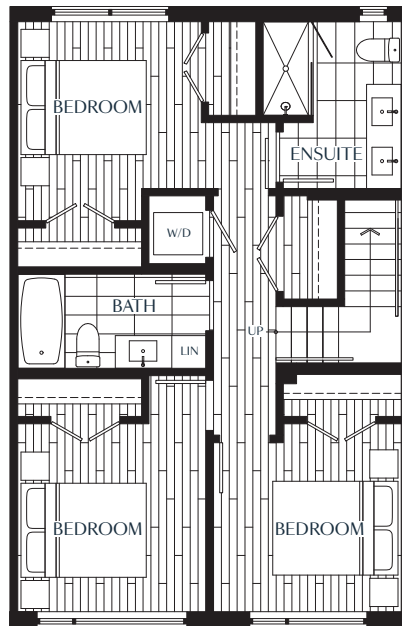
# C1

3 BEDROOM

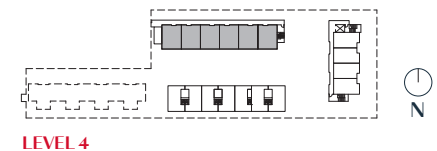
2.5 Bath + Roof Deck

Interior: 1,250 - 1,254 SF

Outdoor: 527 - 532 SF



**BUILDING C**  
**TOWNHOUSE: 441, 442, 443, 444, 445 & 446**



The developer reserves the right to make modifications and changes to the building design, elevations, dimensions, specifications, features and prices, without prior notification. Decks, patios, stairs and windows may vary based on site conditions. All sizes and dimensions are approximate and based on architectural measurements. Reverse and/or mirror plans occur throughout the development. Please see disclosure for specific offering details once available. This is not an offering for sale. E & O. E.

**Wall**  
FINANCIAL  
CORPORATION

**Macdonald**  
PLATINUM MARKETING

# The Trails

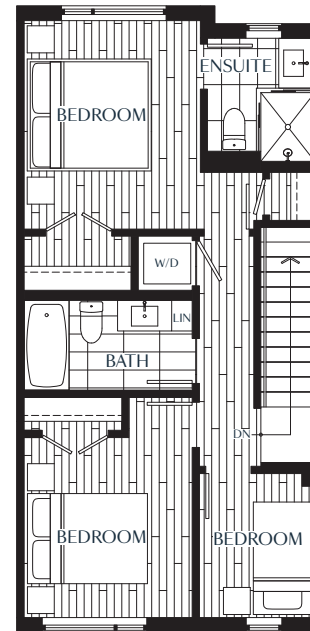
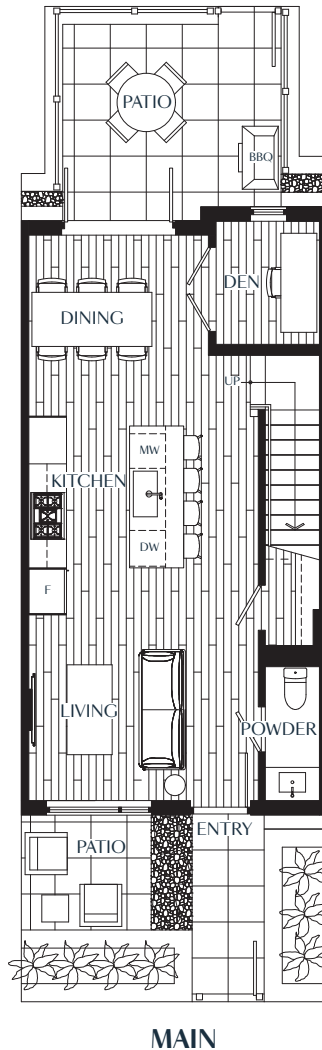
## C2

JR. 3 BEDROOM + DEN

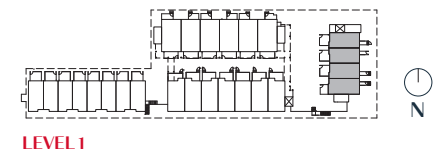
2.5 Bath

Interior: 1,131 - 1,154 SF

Outdoor: 259 - 335 SF



**BUILDING D**  
**TOWNHOUSE: 161, 162, 163 & 164**



The developer reserves the right to make modifications and changes to the building design, elevations, dimensions, specifications, features and prices, without prior notification. Decks, patios, stairs and windows may vary based on site conditions. All sizes and dimensions are approximate and based on architectural measurements. Reverse and/or mirror plans occur throughout the development. Please see disclosure for specific offering details once available. This is not an offering for sale. E & O. E.

**Wall**  
FINANCIAL  
CORPORATION

**Macdonald**  
PLATINUM MARKETING



# The Trails

## C3

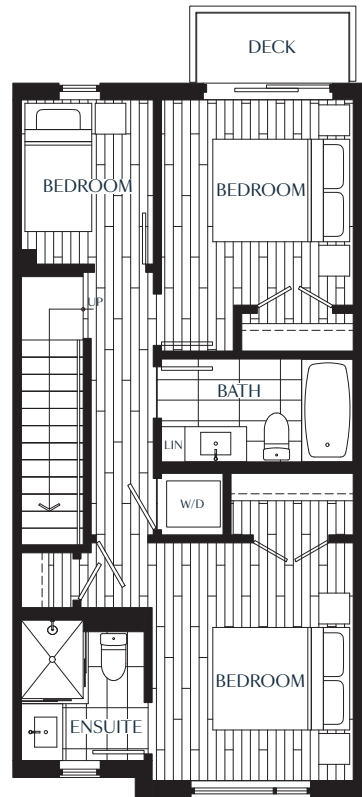
JR. 3 BEDROOM

2.5 Bath + Roof Deck

Interior: 1,039 - 1,049 SF

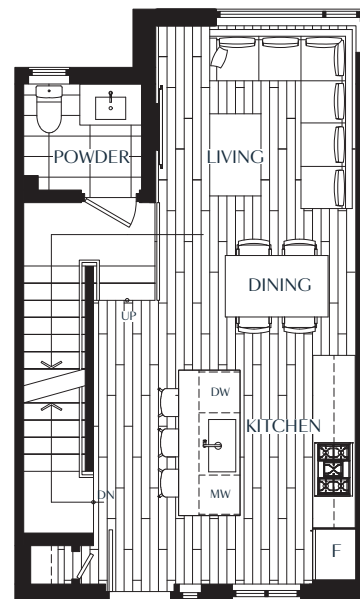
Outdoor: 373 - 426 SF

VARIATION OCCURS AT SUITES 461 & 464

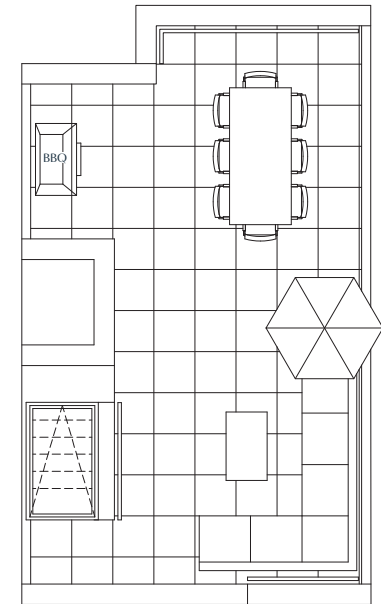


LOWER

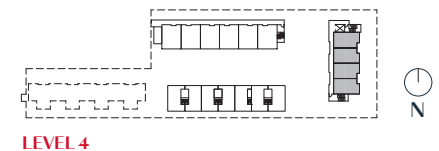
VARIATION OCCURS AT SUITE 461



MAIN



ROOF DECK



**BUILDING C**  
TOWNHOUSE: 461, 462, 463 & 464

The developer reserves the right to make modifications and changes to the building design, elevations, dimensions, specifications, features and prices, without prior notification. Decks, patios, stairs and windows may vary based on site conditions. All sizes and dimensions are approximate and based on architectural measurements. Reverse and/or mirror plans occur throughout the development. Please see disclosure for specific offering details once available. This is not an offering for sale. E & O. E.

**Wall**  
FINANCIAL  
CORPORATION

**Macdonald**  
PLATINUM MARKETING

# The Trails

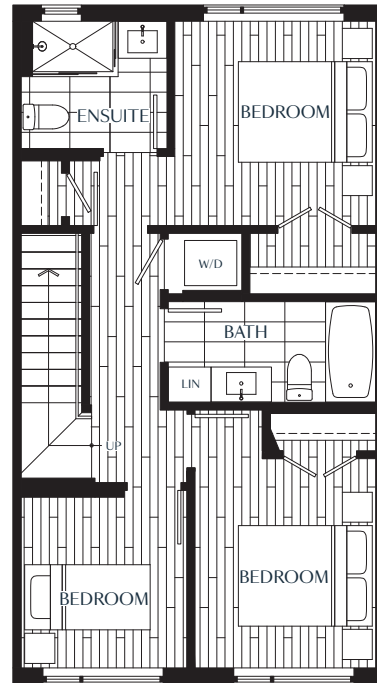
## C4

JR. 3 BEDROOM

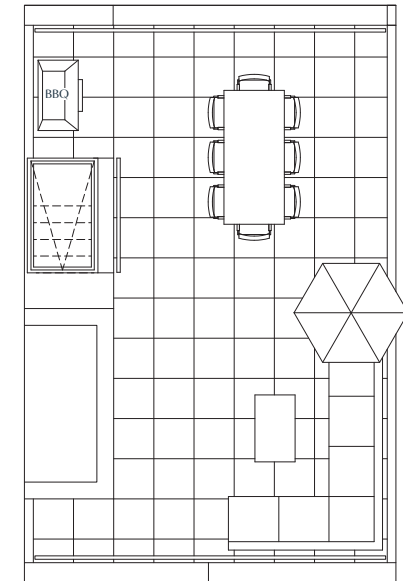
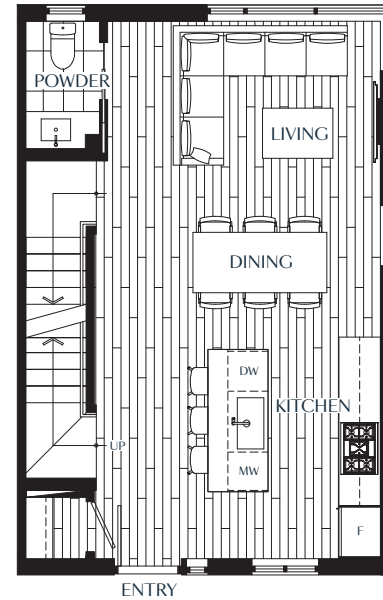
2.5 Bath + Roof Deck

Interior: 1,130 - 1,143 SF

Outdoor: 444 - 516 SF

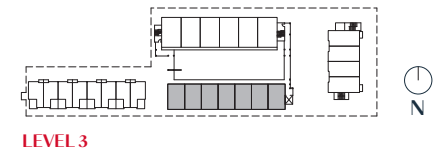


VARIATION OCCURS AT SUITE 351



BUILDING E

TOWNHOUSE: 351, 352, 353, 354, 355, 356 & 357



The developer reserves the right to make modifications and changes to the building design, elevations, dimensions, specifications, features and prices, without prior notification. Decks, patios, stairs and windows may vary based on site conditions. All sizes and dimensions are approximate and based on architectural measurements. Reverse and/or mirror plans occur throughout the development. Please see disclosure for specific offering details once available. This is not an offering for sale. E & O. E.

# The Trails

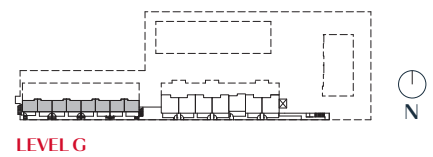
# D

3 BEDROOM + DEN

2.5 Bath + Roof Deck

Interior: 1,606 - 1,647 SF

Outdoor: 344 - 372 SF



**BUILDING F**  
**TOWNHOUSE: 131, 132, 133, 134, 135, 136, 137 & 138**

The developer reserves the right to make modifications and changes to the building design, elevations, dimensions, specifications, features and prices, without prior notification. Decks, patios, stairs and windows may vary based on site conditions. All sizes and dimensions are approximate and based on architectural measurements. Reverse and/or mirror plans occur throughout the development. Please see disclosure for specific offering details once available. This is not an offering for sale. E & O. E.