

MODERN
BOTANICAL
LIVING

49 WEST COAST GARDEN
STYLE TOWNHOMES



FOSTER COMMUNITY, FOSTER LIVING.

WEST COQUITLAM

the GROVE



IMMERSIVE. EXPRESSIVE. WEST COQUITLAM.



An enchanting residential neighbourhood, West Coquitlam is characterized by tree-lined streets and abundant green space, and rooted in a legacy of family-centric living. With close connection to transit and amenities, this community is undergoing a transformation to offer residents an aspirational, yet tranquil, way of life.



RICH IN COMMUNITY SPIRIT

Immerse yourself in the idyllic energy of this peaceful residential enclave rooted in a legacy of family, recreation, and community. The Grove acts as a landing pad just four blocks removed from the bustle of Burquitlam's urban centre, and offers plenty of space to grow.

BURQUITLAM: AN EVOLVING NEIGHBOURHOOD

Burquitlam's urban hub is quickly emerging to offer increased connectivity and a balanced suite of amenities. Directly across the street, Cottonwood Park is being re-envisioned to best serve the desires of this growing community. The Burquitlam SkyTrain Station is just at your doorstep, providing connection to destinations both near and far.

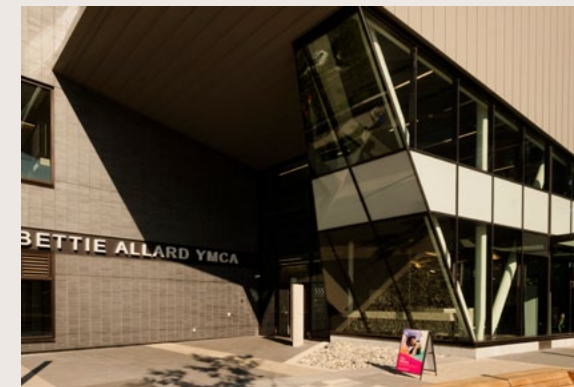


CONVENIENT AND CONNECTED

Burquitlam is closely connected to the urban experience of the Port Moody Waterfront, from where you can explore brewers row and take in the North Shore Mountains. Venture south to Lougheed Town Centre, long recognized as a bustling hub that features over 160 diverse culinary destinations, shops, and amenities. Both the SkyTrain and the comprehensive road network provide access anywhere you need to go – whether it be downtown Vancouver, the North Shore, or Vancouver International Airport.

FAMILY FRIENDLY

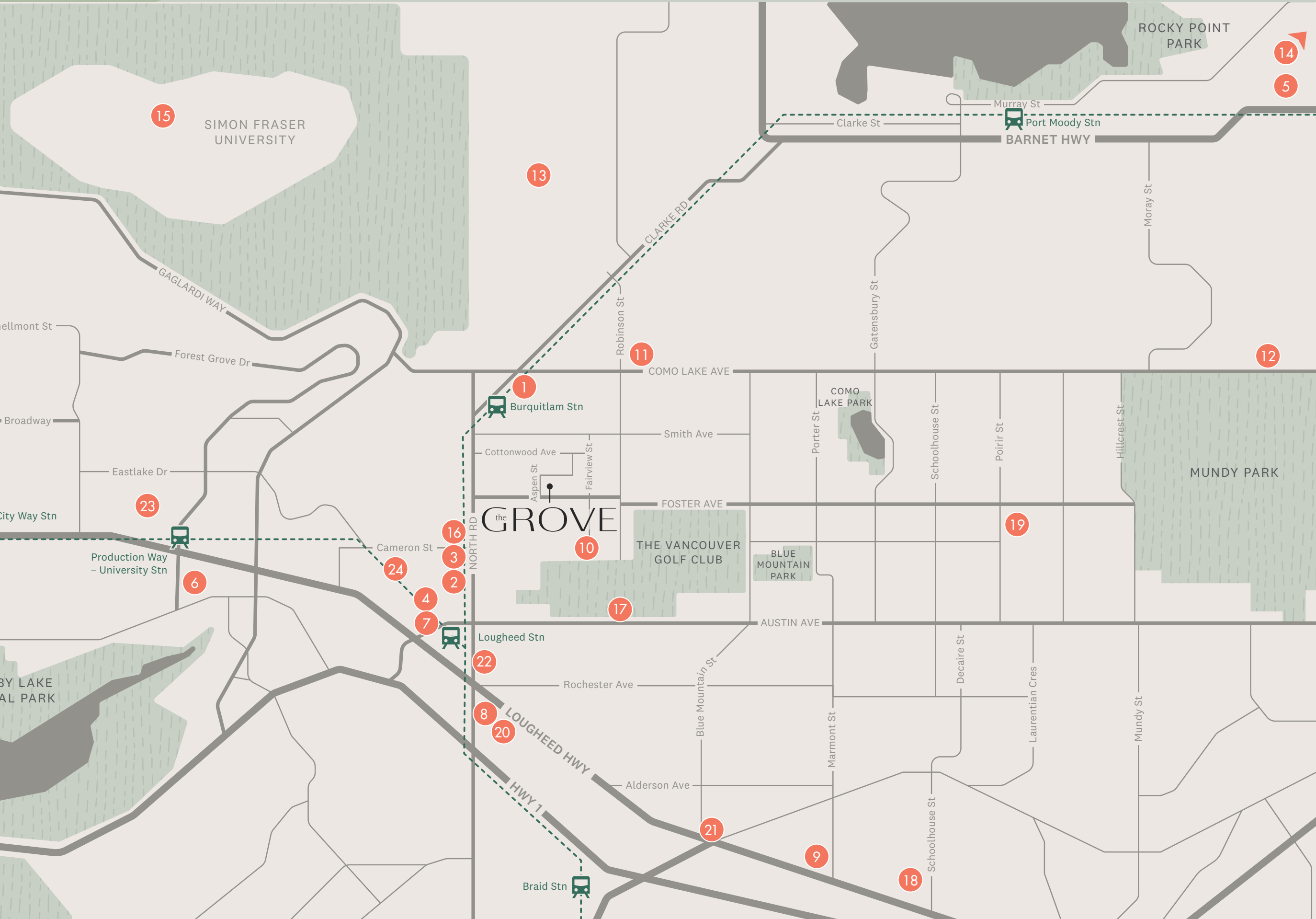
Burquitlam also offers access to incredible education. Excellent elementary and secondary schools dot the region, and world-renowned Simon Fraser University lies just up the hill.



PLACES FOR ACTIVITY

The state-of-the-art Bettie Allard YMCA recently opened its doors, offering a host of athletic, leisure, and childcare development programs.





SHOPPING

- 1. Safeway Burquitlam
- 2. Save-On-Foods
- 3. BC Liquor Stores
- 4. Lougheed Town Centre
- 5. Coquitlam Centre
- 6. Costco
- 7. Walmart
- 8. H-Mart Coquitlam
- 9. TNT Supermarket

EDUCATION

- 10. Roy Stibbs Elementary School
- 11. Banting Middle School
- 12. Charles Best Secondary School
- 13. Glenayre Montessori Centre
- 14. Douglas College
- 15. Simon Fraser University

RECREATION

- 16. GoodLife Fitness Burnaby
- 17. The Vancouver Golf Club
- 18. Cineplex Cinemas Coquitlam and VIP
- 19. Poirier Sport and Leisure Complex

DINING

- 20. JOEY Coquitlam
- 21. Townhall Public House
- 22. Coffee Monster
- 23. Degeraad Brewing
- 24. Green Leaf Sushi

WALK TIMES TO KEY SKYTRAIN STATIONS

- 12 mins - Burquitlam Station
- 20 mins - Lougheed Station

COMMUTE TIMES VIA SKYTRAIN

- 30 mins - Commercial-Broadway Station
- 45 mins - Granville Station

KEY DRIVE TIMES

- 4 mins - City of Lougheed Shopping Centre
- 6 mins - SFU
- 10 mins - Port Moody

A FRESH PERSPECTIVE

In West Coquitlam lies The Grove, a collection of 49 townhomes where city and nature intertwine. Custom designed, each home merges West Coast contemporary architectural ideologies with spacious interiors that draw inspiration from single-family living. Here, underground parking creates space for lush outdoor courtyards, which harmonize with soft, natural interior textures to bring a renewed sense of clarity to everyday rituals.



THE BUILDING

Distinct, West Coast contemporary architecture lends a fresh perspective to this collection of 49 townhomes graciously spread across 6 buildings. Inspired by the tradition of single-family living, homes are custom designed to feature open-concept interiors. The result is spectacular: spacious, ground oriented townhomes that intertwine with an expansive private grove to offer true indoor / outdoor living.

MODERN BOTANICAL LIVING





AN OUTDOOR EXPERIENCE

All ground-oriented homes are bordered by front and back yards – providing residents a variety of spaces in which to dwell. Select homes also include spacious elevated balconies from where residents can immerse themselves in the natural surroundings and breathe fresh, crisp air.

The focus on indoor / outdoor living is further punctuated by private rooftop patios in select homes – the perfect perch from where to partake in al fresco dining, host friends and family, or simply take in the natural wonder of Burquitlam.

THOUGHTFUL HOMES DESIGNED FOR A NEW GENERATION

Custom designed, each townhome incorporates natural textures to provide clarity and ease. Light hues and clean, contemporary lines offer subtle sophistication to create a refined palette that compliments the expansive outdoor courtyard.



NATURAL + DESIGN ORIENTED + SIMPLIFIED



Modern, minimalistic design is accented by the large windows that span each home, which showcase the landscape and allow sunlight to splay across interiors, illuminating daily rituals. From here, embrace harmony as you witness the changing of the seasons.



INTELLIGENT + EFFICIENT DESIGN

Across all homes, large primary bedrooms feature luxurious ensuites and deluxe walk-in closets. Select home configurations include below-grade flex rooms – giving residents extra space that can be outfitted to meet their needs. Create the ideal office space, explore a variety of storage options, or fit the space out as a fully-equipped home gym.



**IMMERSIVE. EXPRESSIVE.
WEST COQUITLAM.**

- The Grove by Foster Living is a collection of 49 townhomes in Burquitlam, a neighbourhood characterized by tree-lined streets and rooted in a legacy of family-centric living
- Located in a peaceful enclave, The Grove is moments from the bustle of Burquitlam’s urban centre and the Burquitlam SkyTrain Station, which conveniently connects to locations including the Port Moody Waterfront, Lougheed Town Centre and downtown Vancouver
- All homes are just moments from balanced amenities including:
 - Cottonwood Park, currently being re-envisioned to better serve the community
 - State-of-the-art Betty Allard YMCA

**WEST COAST CONTEMPORARY
ARCHITECTURE**

- Custom designed by Ciccozzi Architecture, all townhomes feature distinct, west coast contemporary architectural ideologies
- Ground-oriented homes are bordered by front and back yards (select homes only)
- Select homes include private rooftop patios (home types B, B1 & D)
- Primary bedrooms include balconies (select homes only)
- Each home includes 1 underground parking stall with EV charging capabilities
 - All EV charging stalls are equipped with a 240V outlet box with up to Level 2 electric vehicle charging capabilities (EV charging station not included)
 - Home types F & G include direct access from the garage

- Underground car wash station
- 91 secure bicycle parking stalls
- Bike locker includes e-bike charging receptacles
- Children’s playground located in The Grove offers hours of play

SINGLE-FAMILY INSPIRED INTERIORS

- All homes are spacious, designed by Ross and Company Interiors, and feature a European-inspired aesthetic
- Select from two colour palettes with clean contemporary finishes:
 - Aspen (light) and Foster (dark)
- Main living areas feature vinyl plank flooring with carpeting on upper floors
- 9’ main floor ceiling heights
- Modern, minimalistic design is accented by the large windows that span each home
- Air conditioning in select rooms offered as an optional upgrade
- All homes include an Electrolux washer and dryer set
- Large linen closets for additional storage (home type G)

KITCHENS

- Euro-line appliance package includes:
 - Blomberg 30” counter-depth fridge
 - Blomberg dishwasher
 - Fulgor Milano 30” gas range cooktop with Fulgor Milano 30” multi-function wall oven
- Panasonic microwave
- Faber 30” slide-out hood fan
- Moen Align single handle faucet with pull down spray
- Kitchen backsplash features large format tiles

- Quartz countertops
- Cabinets feature a slab door square edge profile
- Diffusion lighting under cabinets
- Rosette dining lights
- Recessed white round panel lights
- 30” single bowl sink

FLEX ROOM

- Select homes include a 350 SF below-grade flex room ideal for a home office, gym, or storage space.

BATHROOMS

- Spacious ensuite shower set with frameless glass door
- Oversize tile for ensuite and powder room flooring
- Oversize tile ensuite shower surrounding wall
- Matte black sink faucet and corresponding shower set
- Matte black wall-mounted accessories
- Designer shower niche offers in-shower storage solutions
- Single handle shower set with slide bar

PEACE OF MIND

- Comprehensive warranty coverage provided by Travellers Insurance of Canada
 - 2-year coverage for electrical and mechanical systems
 - 5-year coverage for building envelope
 - 10-year coverage for structural defects
- All homes are proudly developed by Foster Living, who provides unrivaled care and attention to every decision in the homebuilding process

GARDEN HOME A

2 Bedroom + Den, 2 Bathroom

Interior: 1,093 Sq Ft

Exterior: 434 - 462 Sq Ft

the GROVE

GARDEN HOME A
2 Bedroom + Den, 2 Bathroom

MODERN BOTANICAL LIVING



GARDEN LEVEL



In our continuing effort to improve and maintain the highest standard, the developer reserves the right to modify or change plans, specifications, features and prices without notice. All dimensions and sizes are approximate and are based on architectural measurements. Please refer to disclosure statement for specific offering details. E.&O.E.

TOWNHOME B

3 Bedroom, 2.5 Bathroom

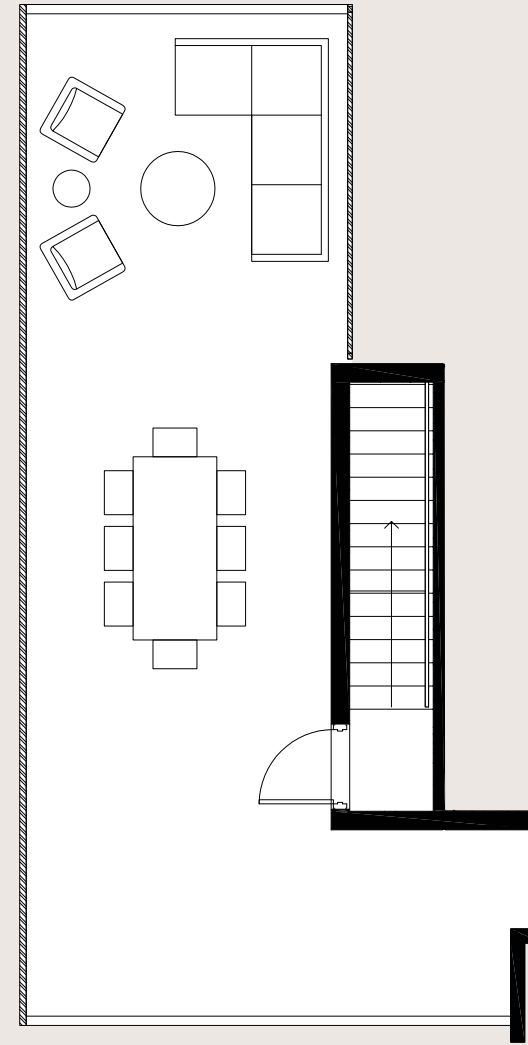
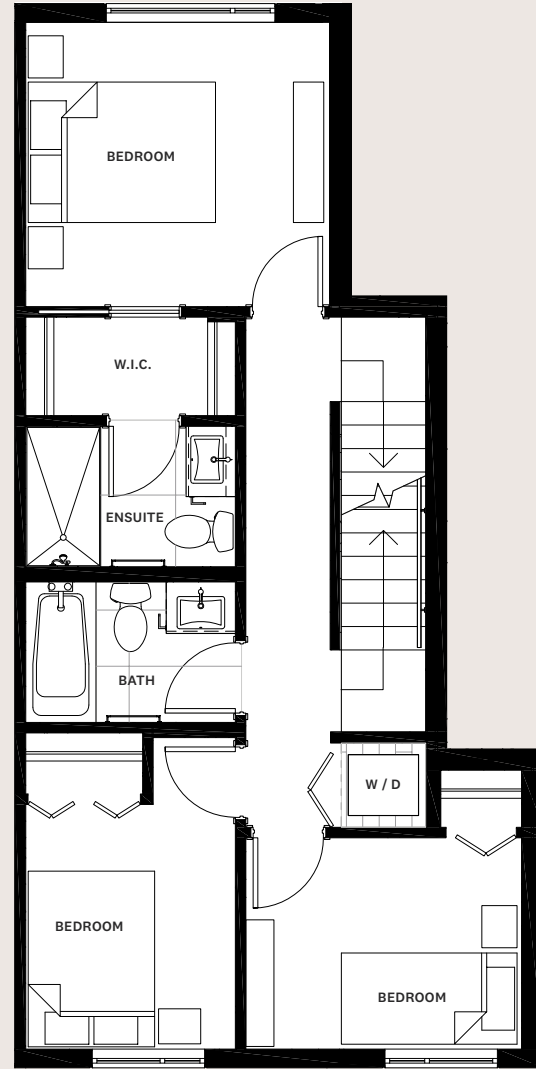
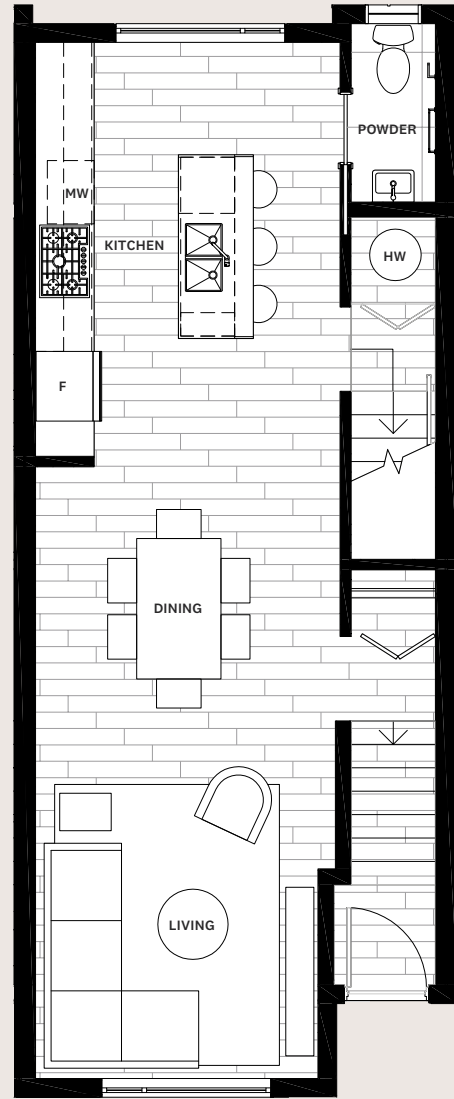
Interior: 1,165 Sq Ft

Exterior: 461 - 466 Sq Ft

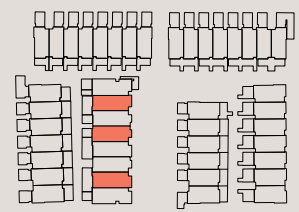
the GROVE

TOWNHOME B
3 Bedroom, 2.5 Bathroom

MODERN BOTANICAL LIVING



UPPER LEVELS



In our continuing effort to improve and maintain the highest standard, the developer reserves the right to modify or change plans, specifications, features and prices without notice. All dimensions and sizes are approximate and are based on architectural measurements. Please refer to disclosure statement for specific offering details. E.&O.E.

TOWNHOME B1

3 Bedroom, 2.5 Bathroom

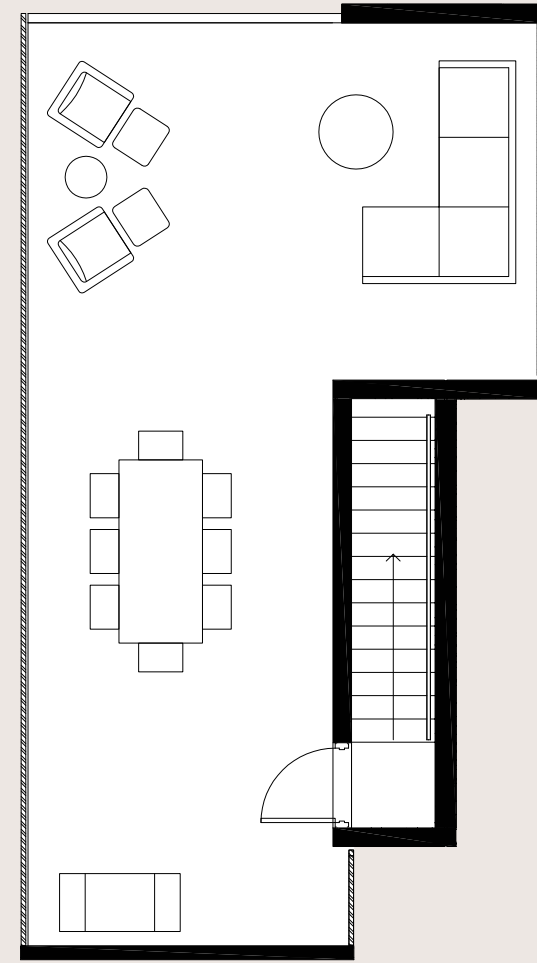
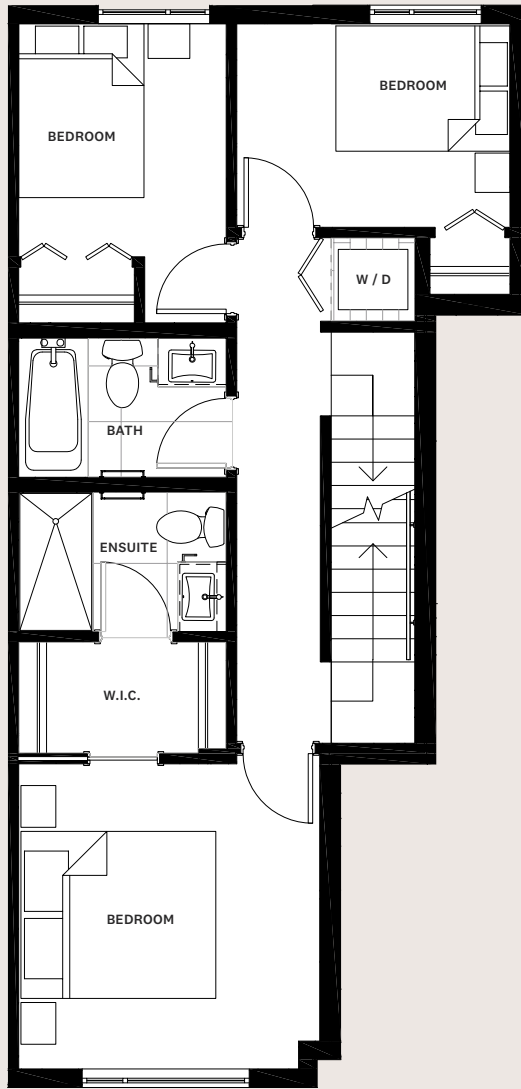
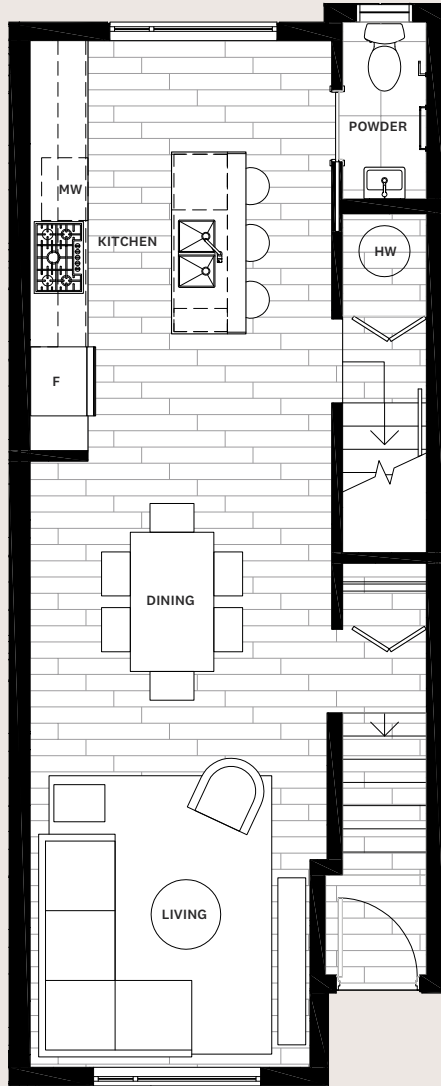
Interior: 1,174 Sq Ft

Exterior: 410 - 460 Sq Ft

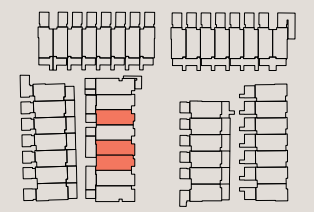
the GROVE

TOWNHOME B1
3 Bedroom, 2.5 Bathroom

MODERN BOTANICAL LIVING



UPPER LEVELS



In our continuing effort to improve and maintain the highest standard, the developer reserves the right to modify or change plans, specifications, features and prices without notice. All dimensions and sizes are approximate and are based on architectural measurements. Please refer to disclosure statement for specific offering details. E.&O.E.

GARDEN HOME C

1 Bedroom, 1 Bathroom

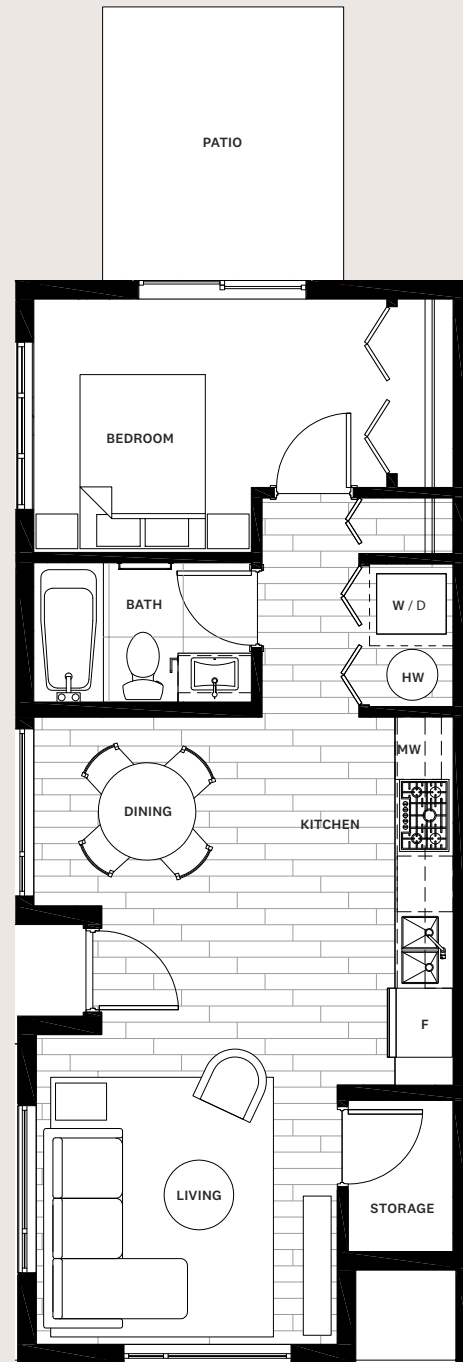
Interior: 574 Sq Ft

Exterior: 403 - 628 Sq Ft

the GROVE

GARDEN HOME C
1 Bedroom, 1 Bathroom

MODERN BOTANICAL LIVING



GARDEN LEVEL



In our continuing effort to improve and maintain the highest standard, the developer reserves the right to modify or change plans, specifications, features and prices without notice. All dimensions and sizes are approximate and are based on architectural measurements. Please refer to disclosure statement for specific offering details. E.&O.E.



TOWNHOME D

2 Bedroom + Den, 2.5 Bathroom

Interior: 1,185 Sq Ft

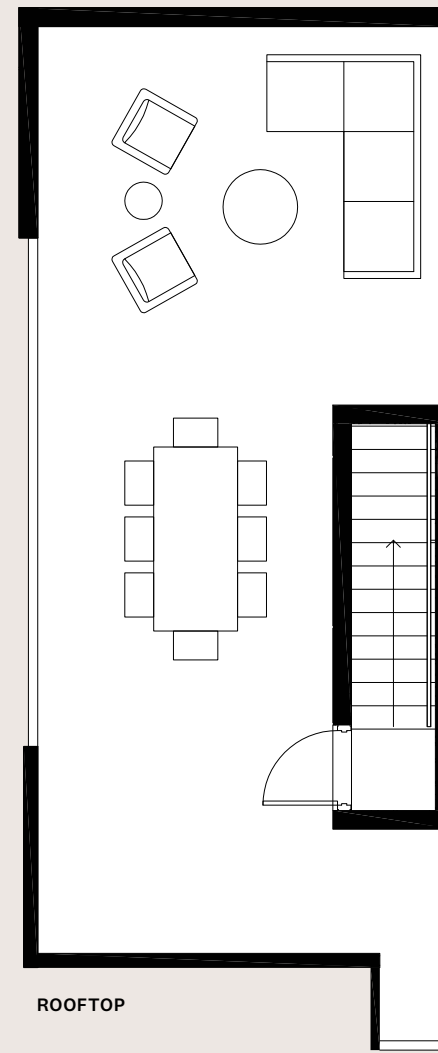
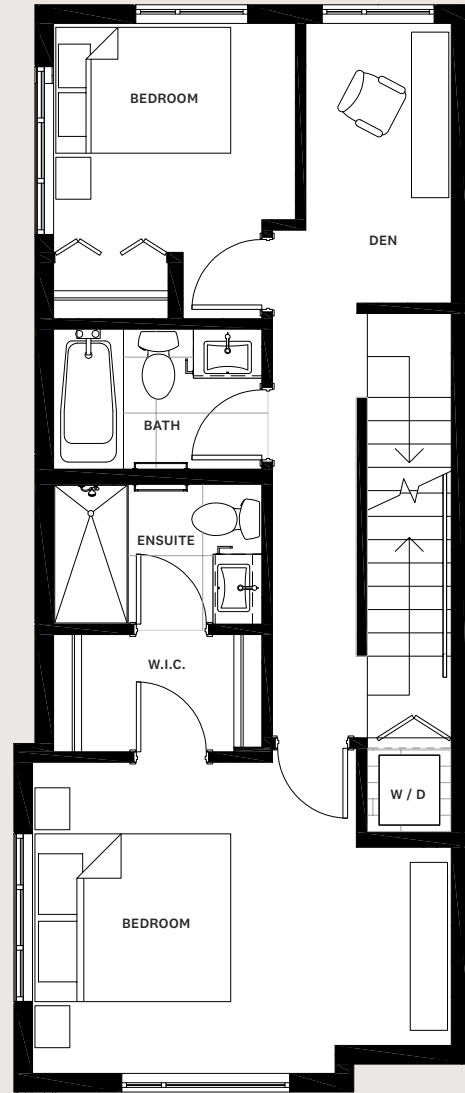
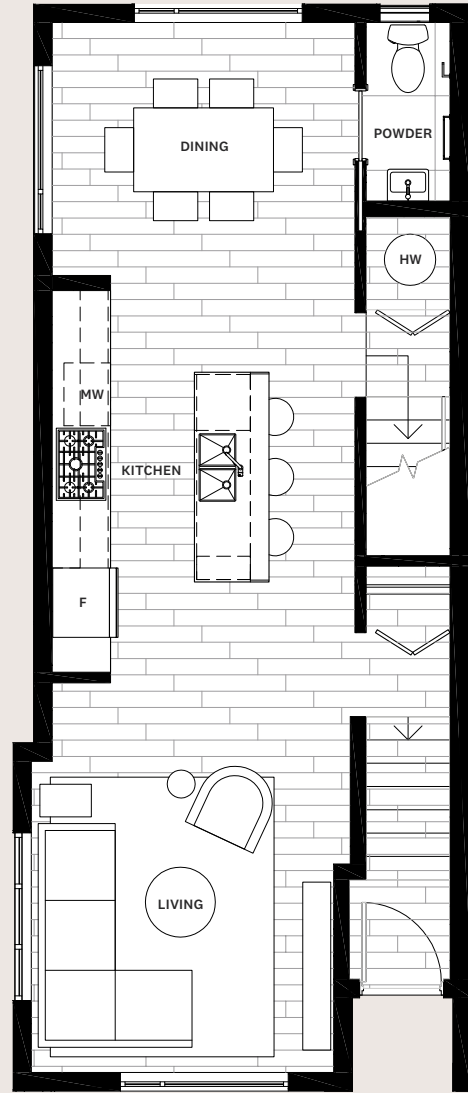
Exterior: 422 Sq Ft

the GROVE

TOWNHOME D

2 Bedroom + Den, 2.5 Bathroom

MODERN BOTANICAL LIVING



UPPER LEVELS



In our continuing effort to improve and maintain the highest standard, the developer reserves the right to modify or change plans, specifications, features and prices without notice. All dimensions and sizes are approximate and are based on architectural measurements. Please refer to disclosure statement for specific offering details. E.&O.E.

TOWNHOME F

3 Bedroom, 2.5 Bathroom

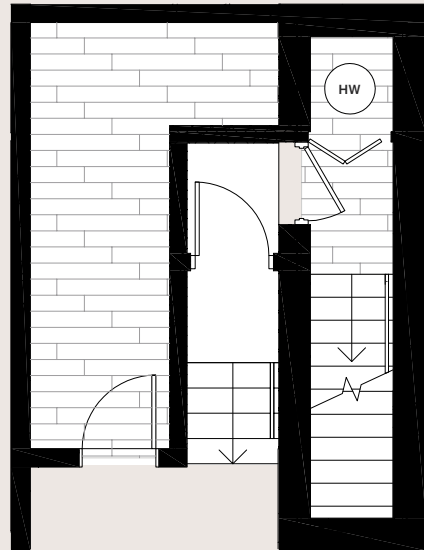
Interior: 1,393 - 1,395 Sq Ft

Exterior: 400 - 407 Sq Ft

the GROVE

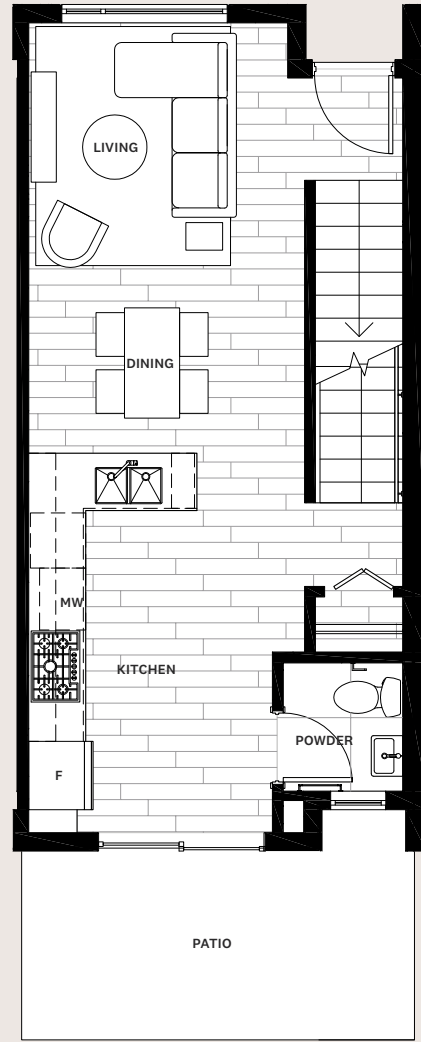
TOWNHOME F
3 Bedroom, 2.5 Bathroom

MODERN BOTANICAL LIVING

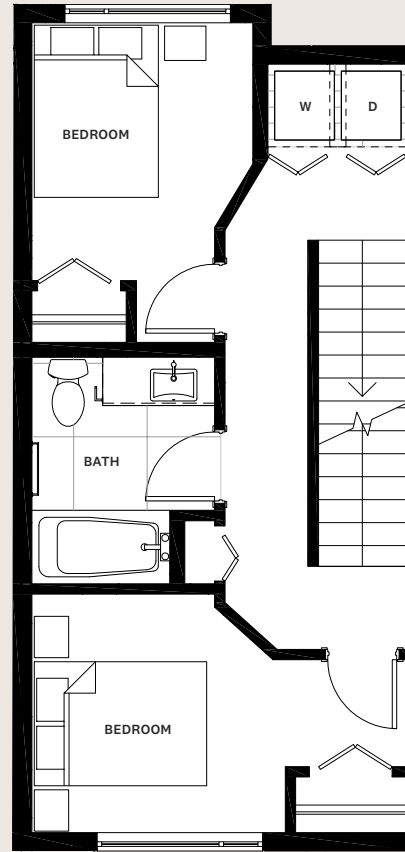


LOWER

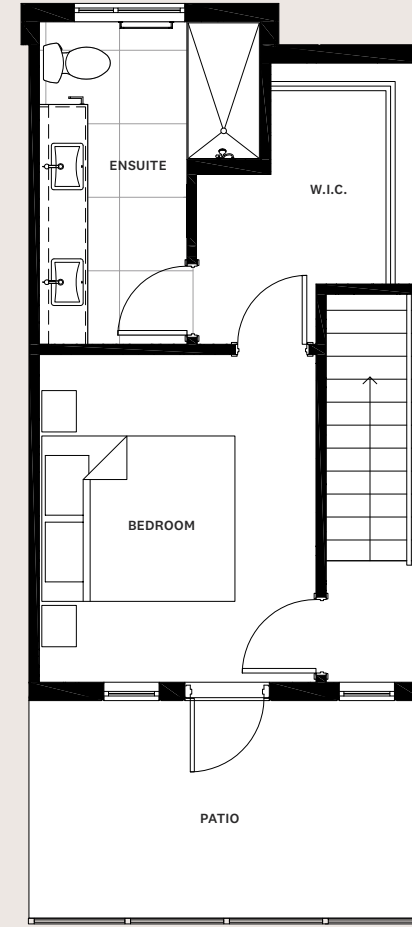
*Typical layout, consult with sales rep for individual unit size



LEVEL 1



LEVEL 2



LEVEL 3

UPPER LEVELS



In our continuing effort to improve and maintain the highest standard, the developer reserves the right to modify or change plans, specifications, features and prices without notice. All dimensions and sizes are approximate and are based on architectural measurements. Please refer to disclosure statement for specific offering details. E.&O.E.

TOWNHOME FE

3 Bedroom, 2.5 Bathroom

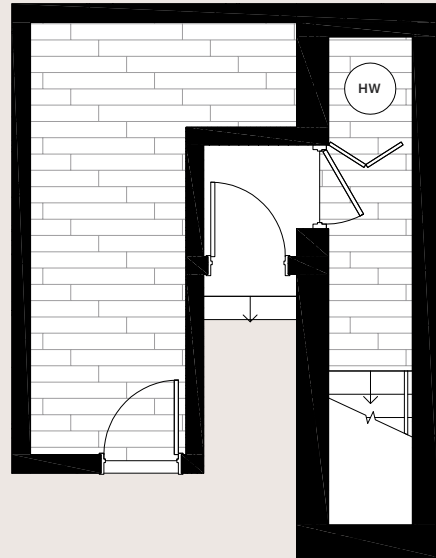
Interior: 1,400 - 1,454 Sq Ft

Exterior: 403 - 418 Sq Ft

the GROVE

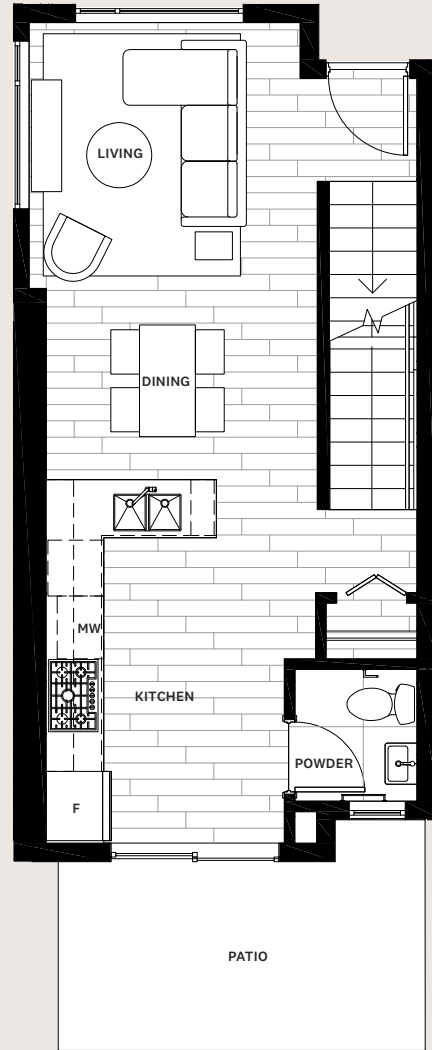
TOWNHOME FE
3 Bedroom, 2.5 Bathroom

MODERN BOTANICAL LIVING

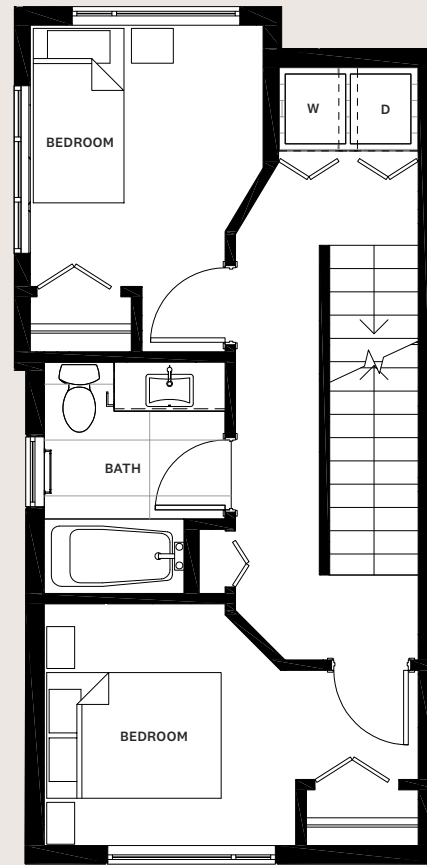


LOWER

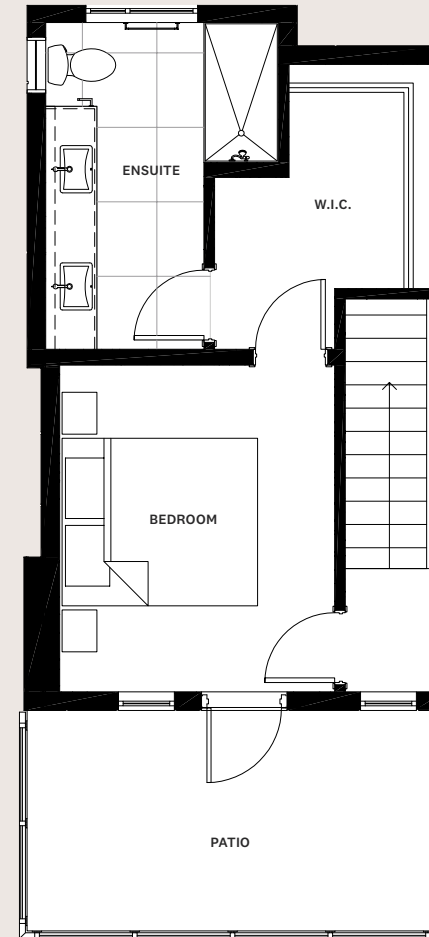
*Typical layout, consult with sales rep for individual unit size



LEVEL 1



LEVEL 2



LEVEL 3

UPPER LEVELS



In our continuing effort to improve and maintain the highest standard, the developer reserves the right to modify or change plans, specifications, features and prices without notice. All dimensions and sizes are approximate and are based on architectural measurements. Please refer to disclosure statement for specific offering details. E.&O.E.

TOWNHOME G

3 Bedroom + Den, 2.5 Bathroom

Interior: 1,710 - 1,718 Sq Ft

Exterior: 398 - 511 Sq Ft

the GROVE

TOWNHOME G
3 Bedroom + Den, 2.5 Bathroom

MODERN BOTANICAL LIVING



LOWER
*Typical layout, consult with sales rep for individual unit size

LEVEL 1

LEVEL 2

LEVEL 3



In our continuing effort to improve and maintain the highest standard, the developer reserves the right to modify or change plans, specifications, features and prices without notice. All dimensions and sizes are approximate and are based on architectural measurements. Please refer to disclosure statement for specific offering details. E.&O.E.



TOWNHOME GL

3 Bedroom + Den, 2.5 Bathroom

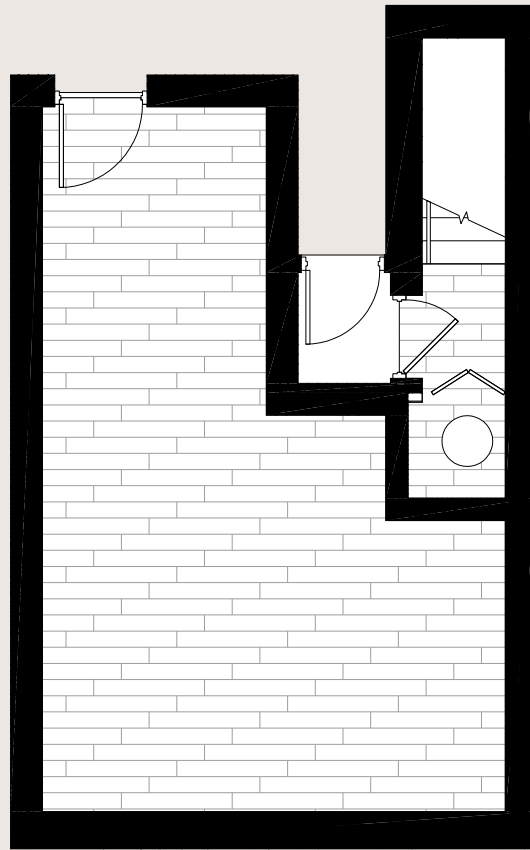
Interior: 1,803 - 1,806 Sq Ft

Exterior: 398 - 401 Sq Ft

the GROVE

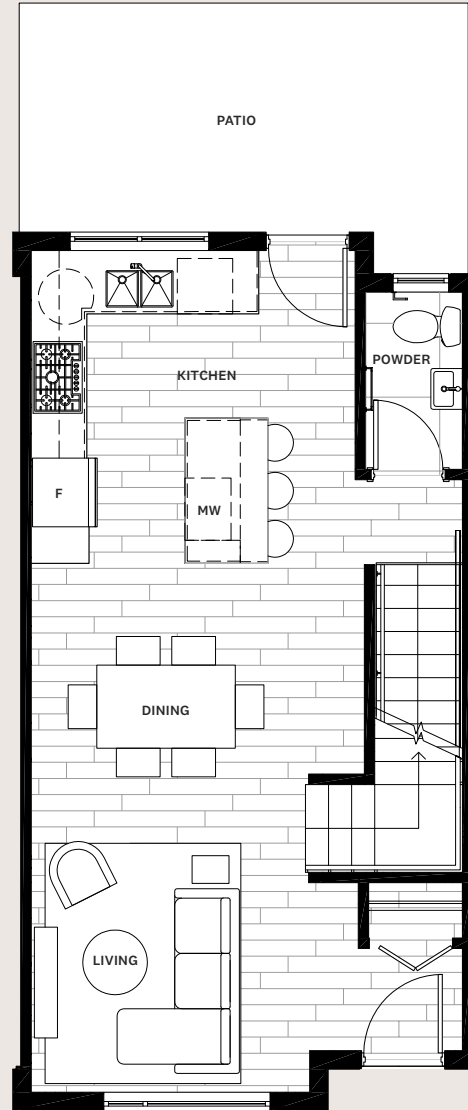
TOWNHOME GL
3 Bedroom + Den, 2.5 Bathroom

MODERN BOTANICAL LIVING

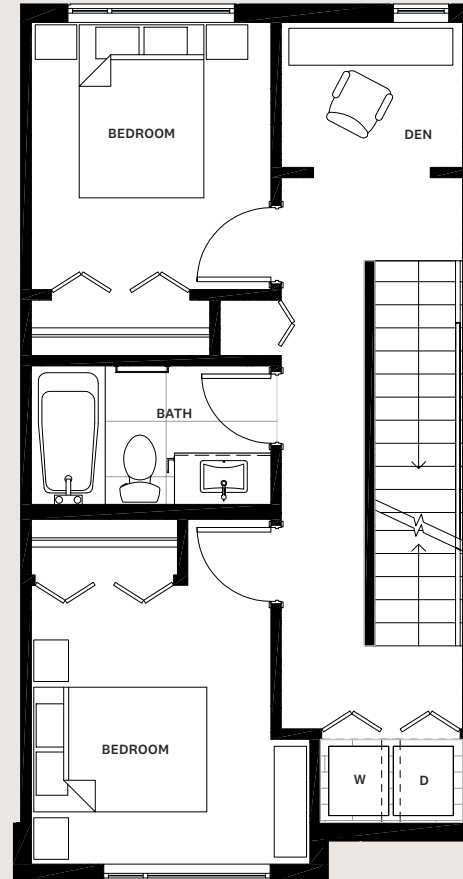


LOWER

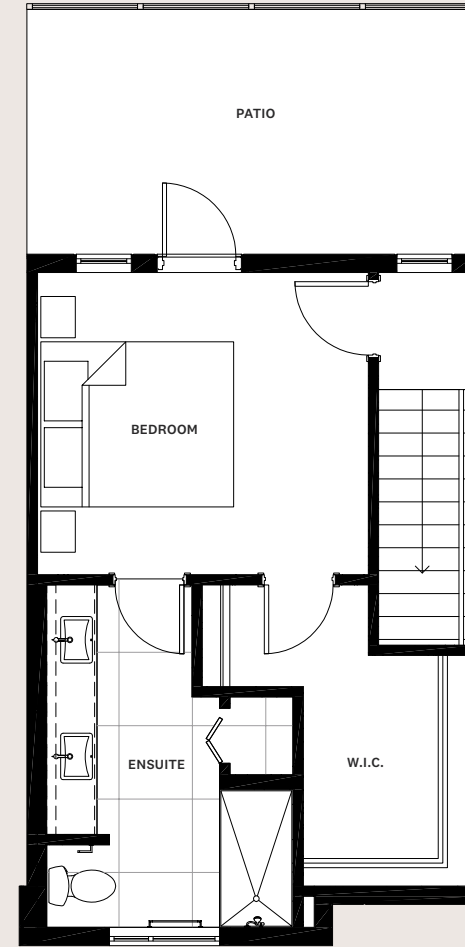
*Typical layout, consult with sales rep for individual unit size



LEVEL 1



LEVEL 2



LEVEL 3

UPPER LEVELS



In our continuing effort to improve and maintain the highest standard, the developer reserves the right to modify or change plans, specifications, features and prices without notice. All dimensions and sizes are approximate and are based on architectural measurements. Please refer to disclosure statement for specific offering details. E.&O.E.

TOWNHOME GE

3 Bedroom + Den, 2.5 Bathroom

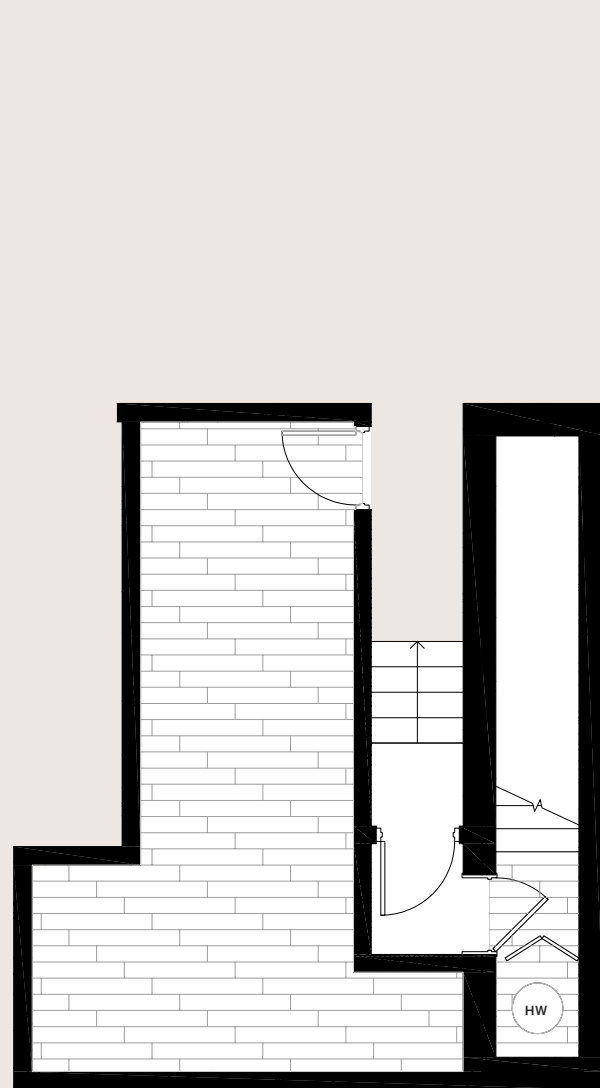
Interior: 1,617 - 1,784 Sq Ft

Exterior: 401 - 505 Sq Ft

the GROVE

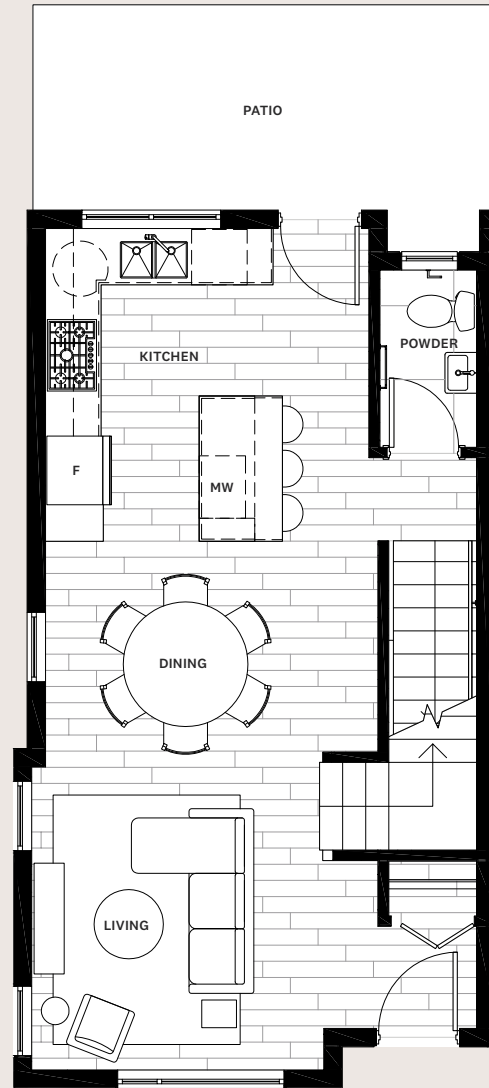
TOWNHOME GE
3 Bedroom + Den, 2.5 Bathroom

MODERN BOTANICAL LIVING

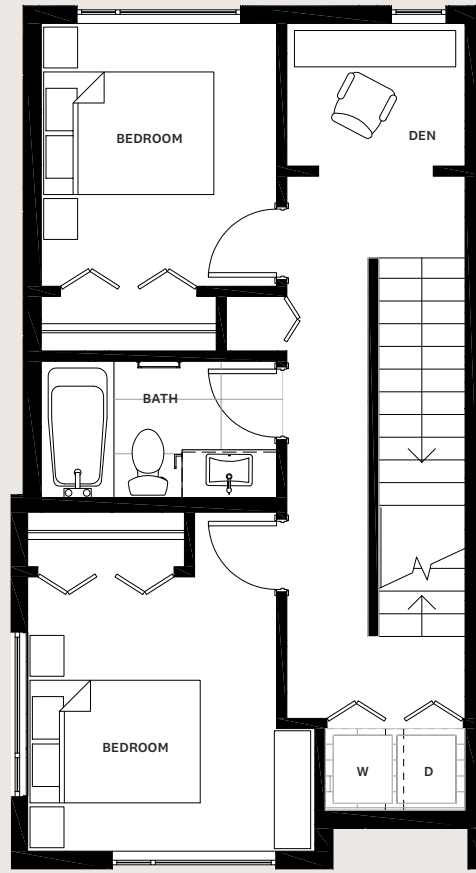


LOWER

*Typical layout, consult with sales rep for individual unit size



LEVEL 1



LEVEL 2



LEVEL 3

UPPER LEVELS



In our continuing effort to improve and maintain the highest standard, the developer reserves the right to modify or change plans, specifications, features and prices without notice. All dimensions and sizes are approximate and are based on architectural measurements. Please refer to disclosure statement for specific offering details. E.&O.E.

TOWNHOME GLE

3 Bedroom + Den, 2.5 Bathroom

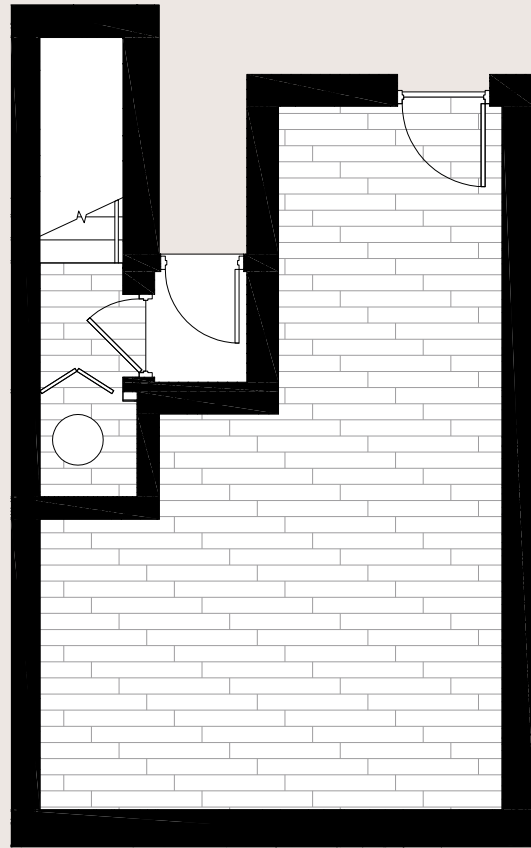
Interior: 1,836 - 1,861 Sq Ft

Exterior: 406 - 408 Sq Ft

the GROVE

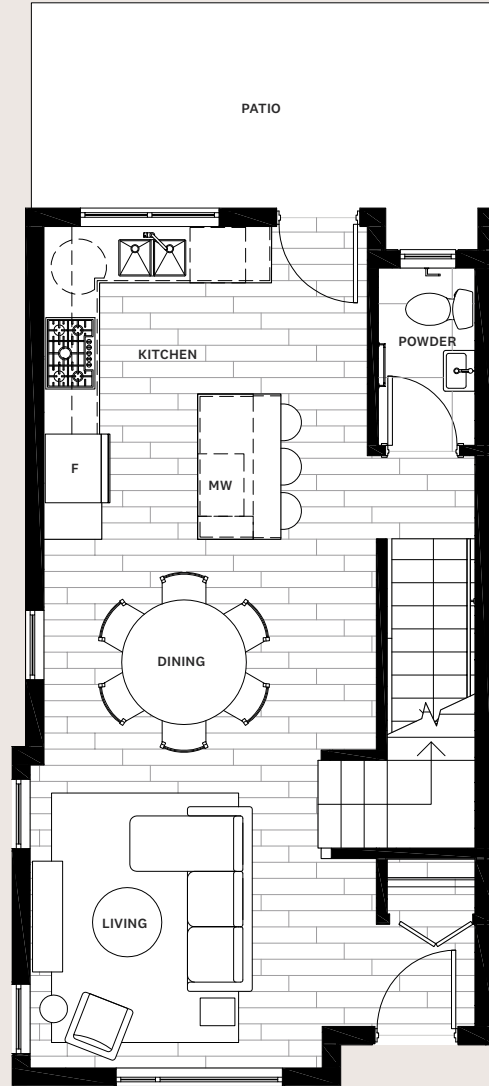
TOWNHOME GLE
3 Bedroom + Den, 2.5 Bathroom

MODERN BOTANICAL LIVING

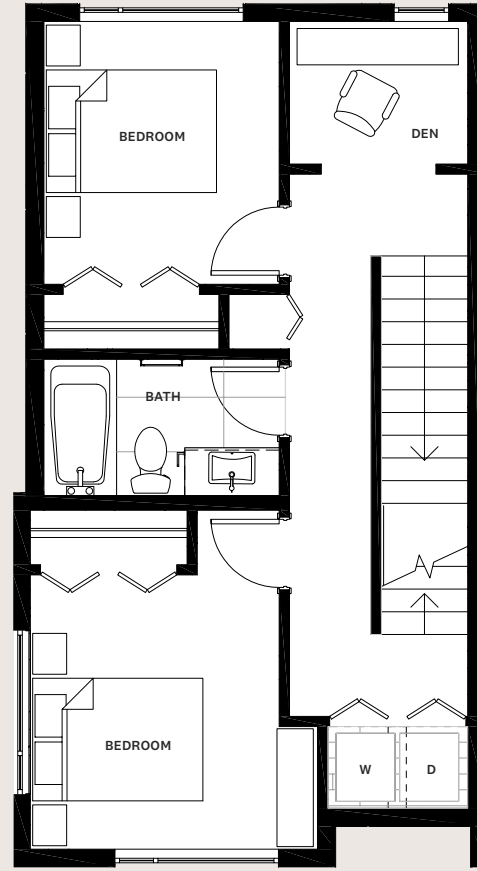


LOWER

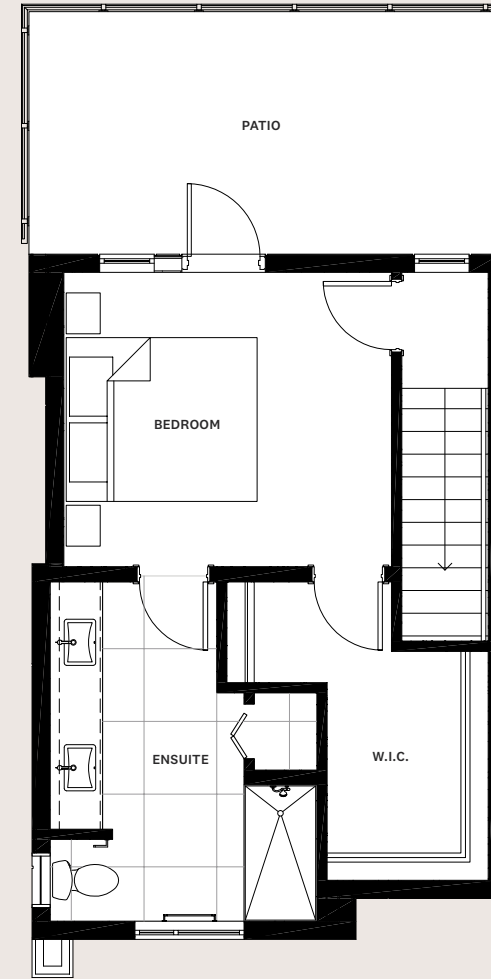
*Typical layout, consult with sales rep for individual unit size



LEVEL 1

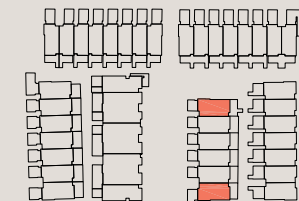


LEVEL 2



LEVEL 3

UPPER LEVELS



In our continuing effort to improve and maintain the highest standard, the developer reserves the right to modify or change plans, specifications, features and prices without notice. All dimensions and sizes are approximate and are based on architectural measurements. Please refer to disclosure statement for specific offering details. E.&O.E.



Foster
Living

NURTURING EVERY STEP OF YOUR HOME OWNERSHIP JOURNEY

We're not just building extraordinary homes – we're putting homeowners at the heart of everything we do. Whether we're curating interior design details or exploring new possibilities in the way we build, we bring unrivaled care and attention to every decision we make.

CICCOZZI ARCHITECTURE

Ciccozzi Architecture Inc. is an award-winning Vancouver-based architectural firm specializing in full-service architectural design, in particular multi-family residential work. They use a cooperative and interactive design process to integrate creative solutions throughout the entire design process – from concept through production to construction. The intimate nature of their work environment fosters this approach and enables them to provide attentive, highly personalized service to their valued clients.

ROSS & COMPANY INTERIORS

Ross & Company Interiors believe that a successful project comes from a collaborative effort. They work closely with their clients to create innovative and cohesive designs for each and every project while keeping budget requirements in mind. Their friendly, flexible approach has created many successful relationships and projects in their 15 year history.

MOMENTUM

Open dialogue, trust and relationships are the core of how business is done at Momentum. Their unique culture is a major part of what keeps their talented marketing and sales team motivated and inspired daily. Momentum partners with their clients to develop a clear vision of the relationship between the developer's brand, their product, and the community it will shape. United, they make life easier for developers, homeowner, and neighbours. This is work they love to do.



MODERN BOTANICAL LIVING



FOSTER COMMUNITY, FOSTER LIVING.

REGISTER NOW

604.757.7288

[THEGROVEBYFOSTER.CA](https://thegrovebyfooster.ca)

In our continuing effort to improve and maintain the highest standard, the developer reserves the right to modify or change plans, specifications, features and prices without notice. All dimensions and sizes are approximate and are based on Architectural measurements. Please refer to disclosure statement for specific offering details. E.&O.E.

DEVELOPED BY
Foster Living

MARKETED BY
momentum