



**REIGN**  
AT METROTOWN

# THE EMBODIMENT OF SOPHISTICATION

Approachably elegant and distinctive by design, Reign is made for those who reach for the sky. With an avant-garde approach to architecture and design, Reign distinguishes itself from the conventional stylings of the neighbouring Metrotown skyline.

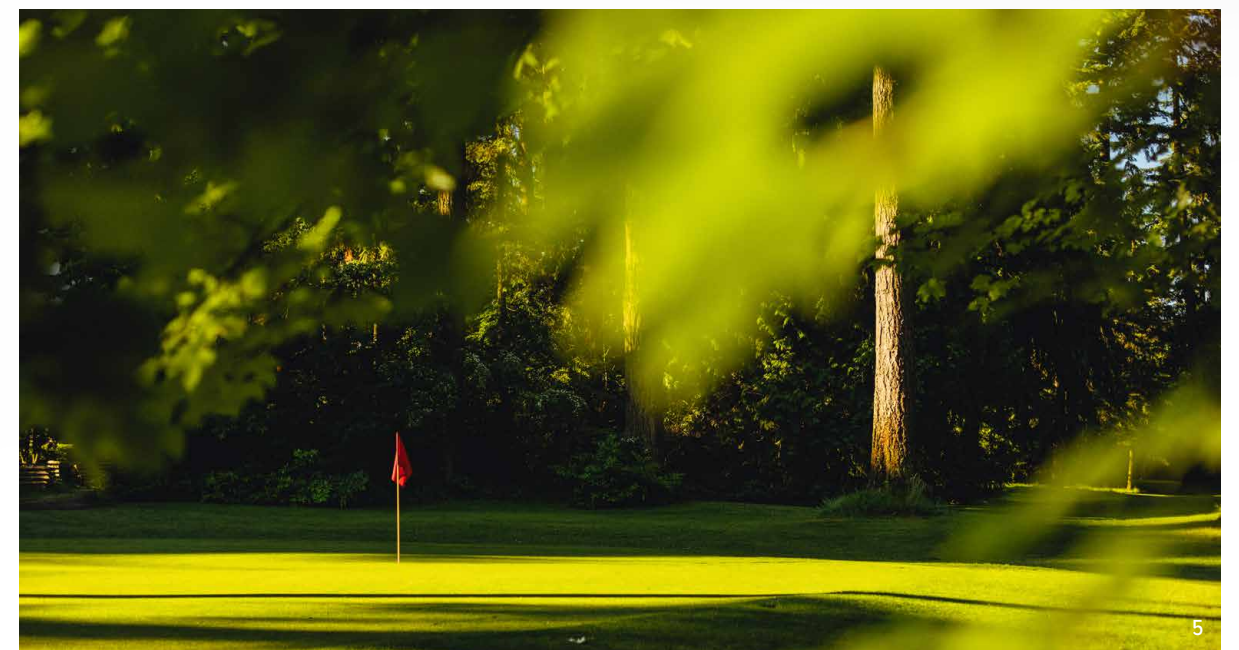


## WHERE URBANITES AND NATURE-SEEKERS THRIVE

Welcome to Metrotown—an urban epicenter rich in character and rooted in convenience. Set in the heart of Burnaby’s downtown core, find the energy of an urban, vibrant city all around you, or a peaceful moment of solitude as you navigate the tree lined trails at Central Park. At Reign, life is about more than what we possess—it’s about a life well lived.

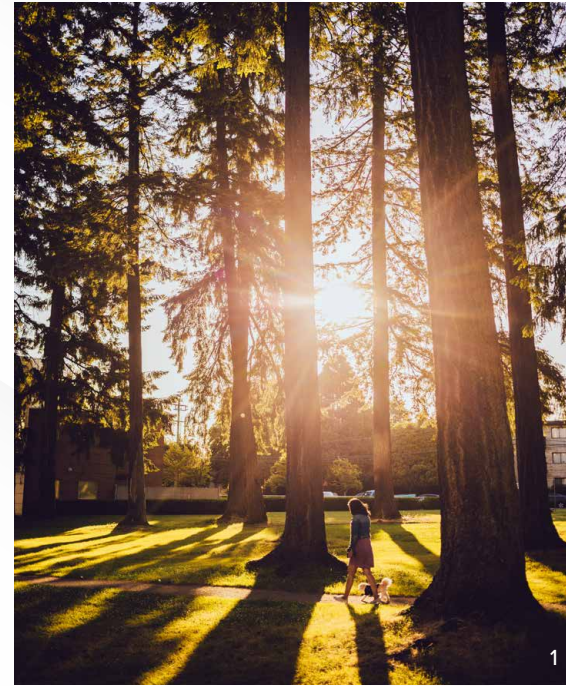


1. CACTUS CLUB CAFE STATION SQUARE
2. KINGSWAY, METROPOLIS AT METROTOWN
3. SOFT PEAKS ICE CREAM
4. METROTOWN SKYTRAIN STATION
5. CENTRAL PARK PITCH & PUTT

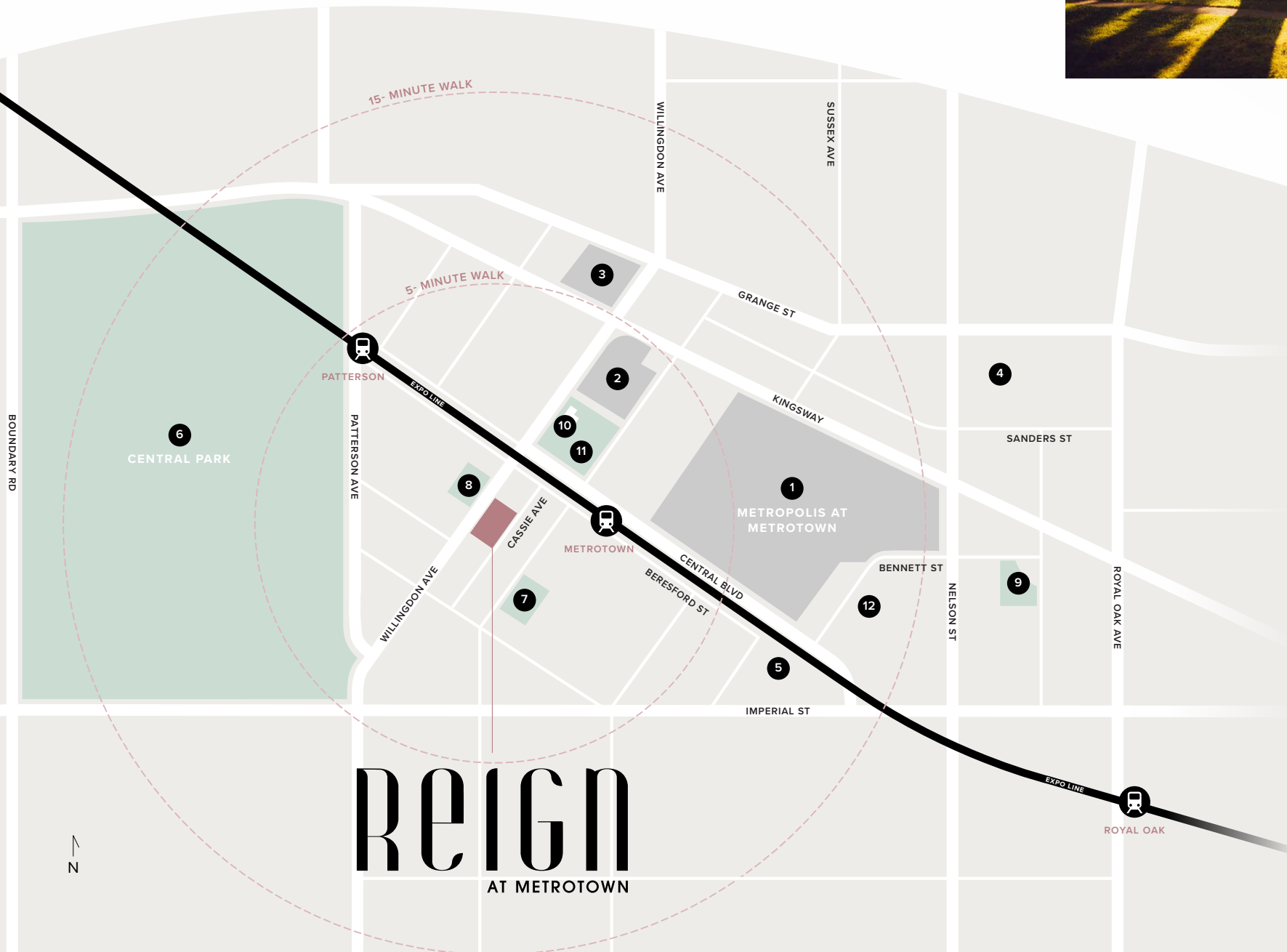


# EASY ACCESS TO EVERYTHING YOU NEED

In the heart of Metrotown, you're steps away from all the essentials that enhance and simplify your daily life—while a comprehensive transit network makes getting further, effortless. A wide range of grocery and shopping centres abound, Bonsor Recreation Complex and the natural vibrancy of Central Park rejuvenate your senses and nurture well-being.



1. LOBLEY PARK
2. TRATTORIA BURNABY
3. METROPOLIS AT METROTOWN



# REIGN AT METROTOWN

## SHOPPING

- 1 Metropolis at Metrotown
- 2 Crystal Mall
- 3 Old Orchard Shopping Centre

## SCHOOLS

- 4 Marlborough Elementary School
- 5 Maywood Community School

## PARKS

- 6 Central Park
- 7 Maywood Park
- 8 Kinnee Park
- 9 Lobley Park

## SERVICES

- 10 Burnaby Public Library
- 11 Burnaby Civic Square
- 12 Bonsor Recreation Complex

## TRANSIT

- Patterson Skytrain Station
- Metrotown Skytrain Station
- Royal Oak Skytrain Station



95

WALK SCORE  
WALKER'S PARADISE



88

TRANSIT SCORE  
EXCELLENT TRANSIT



82

BIKE SCORE  
VERY BIKEABLE



5 minutes walk  
to Central Park

---

70 km  
of bike routes and urban trails

---

25% of the land  
in Burnaby is designated to  
parks and open spaces

Metropolis is B.C.'s  
largest shopping mall

---

Over 500  
shops and services in Metrotown

---

\$460 Million  
invested into the Metrotown Events  
and Convention Centre





## INNOVATIVE FORM AND FUNCTION

Reign's sleek, distinctive structure is an intentional departure from the traditional design of neighbouring geometric towers. With curved corners and a softened facade, Reign's architecture evokes a sense of movement, while providing residents with more indoor and outdoor living space.



## TIMELESS ELEGANCE MEETS MODERN DESIGN

Reign's carefully curated interiors are an expression of understated luxury. Sleek finishings and high quality materials bring an air of elegance to your living space—while three contemporary colour schemes and designer kitchen palettes give you the freedom to personalize your home to fit your style.



## A PEACEFUL PLACE TO UNWIND

Back-lit mirrors, slab-edge countertops, tiled vanity walls and modern matte fixtures make your ensuite a restful retreat.



## AMENITIES MADE FOR CONTEMPORARY LIVING

At Reign, the essential amenities you need for an elevated way of life are an elevator stop away. Each of Reign's towers are outfitted with contemporary amenities that were designed with community in mind—and are accessible to all across both buildings—giving you ample space to gather with those you love.

# SOUTH TOWER

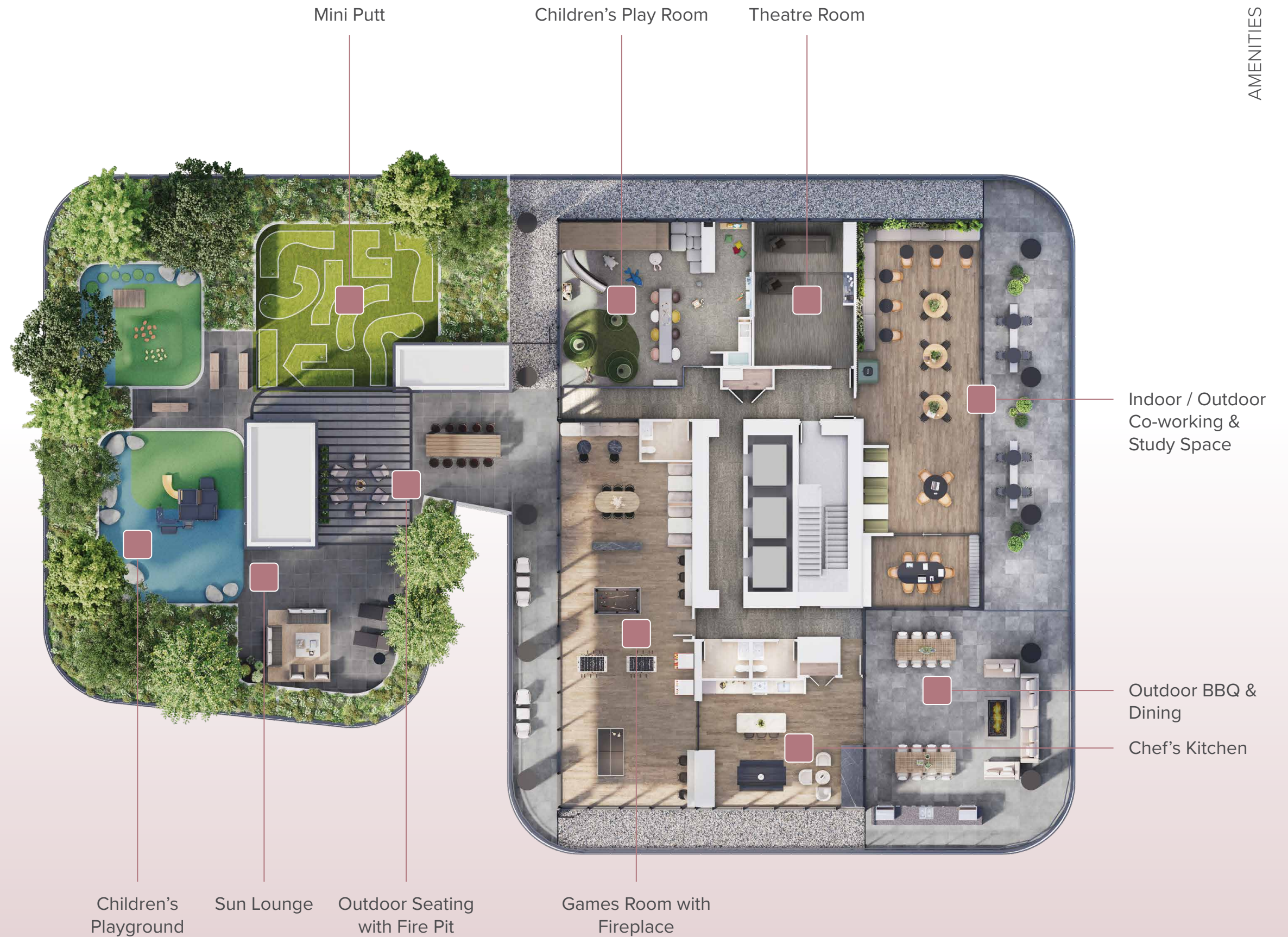
## LEVEL 9

Outdoor mini putt evokes an opportunity for a challenge amongst friends, while inside find a throwback of arcade games next to foosball, and ping pong. Optimizing your productivity is possible too—in the indoor/outdoor co-working space.

### South Tower – Amenities

#### Level 9

- Mini Putt
- Children’s Play Room
- Theatre Room
- Indoor / Outdoor Co-working & Study Space
- Outdoor BBQ & Dining
- Chef’s Kitchen
- Games Room with Fireplace
- Outdoor Seating with Fire Pit
- Sun Lounge
- Children’s Playground



# NORTH TOWER

## ROOFTOP LEVEL 38

Take in the sunset and panoramic views from the 38th floor as you entertain friends and family on the rooftop lounge. Or find a peaceful moment in the sauna or steam room after a cold plunge.

### North Tower – Amenities

- Fitness Amenity (L1)
  - Fully-equipped Double Height Fitness Centre
  - Basketball Court
  - Pickleball Court
  - TRX Machines
  - Yoga Studio
- Guest Suites (L3)
- Golf Simulator (L3)

### North Tower – Rooftop Amenities Level 38

- Rain Showers
- Cold Plunge & Hot Tub
- Outdoor Dining, BBQ & Fireplace
- Chef’s Kitchen with Long Table Seating
- Billiards Room
- 360 Degree Views of Downtown Vancouver, Metrotown’s Skyline and more
- Lounge
- Steam Room
- Sauna Room



# SOUTH TOWER

## LEVEL 10 – LEVEL 35

### PLAN B2

1 BED + DEN + 1 BATH

INTERIOR	592 SF
EXTERIOR	150 SF
<b>TOTAL</b>	<b>742 SF</b>

### PLAN B1

1 BED + 1 BATH

INTERIOR	540 SF
EXTERIOR	164-165 SF
<b>TOTAL</b>	<b>704-705 SF</b>

### PLAN C

2 BED + 2 BATH

INTERIOR	803-807 SF
EXTERIOR	409 SF
<b>TOTAL</b>	<b>1,212-1,216 SF</b>

### PLAN A

STUDIO + 1 BATH

INTERIOR	397-400 SF
EXTERIOR	82 SF
<b>TOTAL</b>	<b>479-482 SF</b>

### PLAN D

3 BED + 2 BATH

INTERIOR	926 SF
EXTERIOR	407 SF
<b>TOTAL</b>	<b>1,333 SF</b>

### PLAN C1

2 BED + DEN + 2 BATH

INTERIOR	814-817 SF
EXTERIOR	410 SF
<b>TOTAL</b>	<b>1,224-1,227 SF</b>

### PLAN B

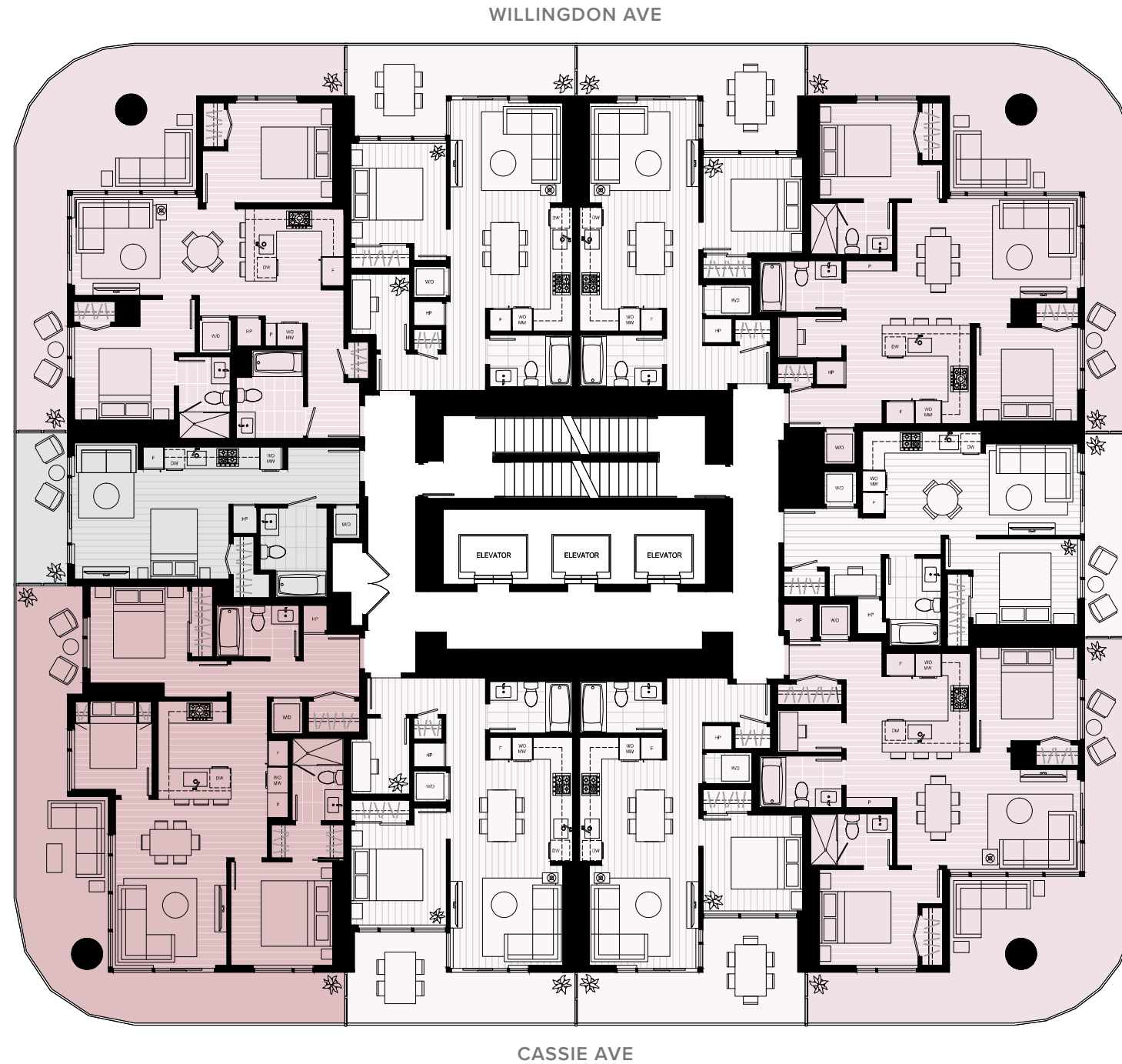
1 BED + 1 BATH

INTERIOR	533-539 SF
EXTERIOR	111 SF
<b>TOTAL</b>	<b>644-650 SF</b>

### PLAN C2

2 BED + DEN + 2 BATH

INTERIOR	821-826 SF
EXTERIOR	408 SF
<b>TOTAL</b>	<b>1,229-1,234 SF</b>



### PLAN B3

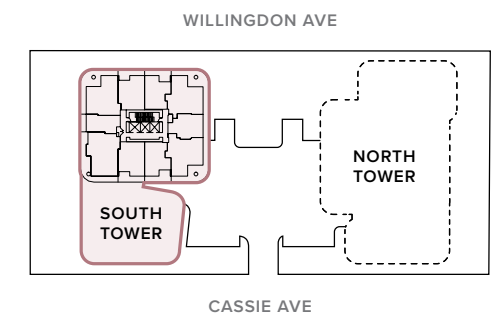
1 BED + DEN + 1 BATH

INTERIOR	596 SF
EXTERIOR	150 SF
<b>TOTAL</b>	<b>746 SF</b>

### PLAN B1

1 BED + 1 BATH

INTERIOR	540 SF
EXTERIOR	164-165 SF
<b>TOTAL</b>	<b>704-705 SF</b>



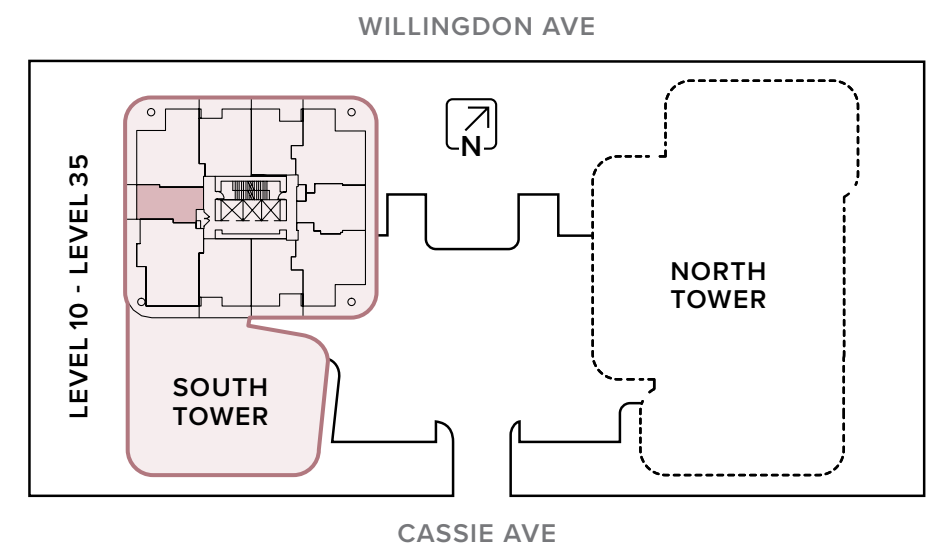
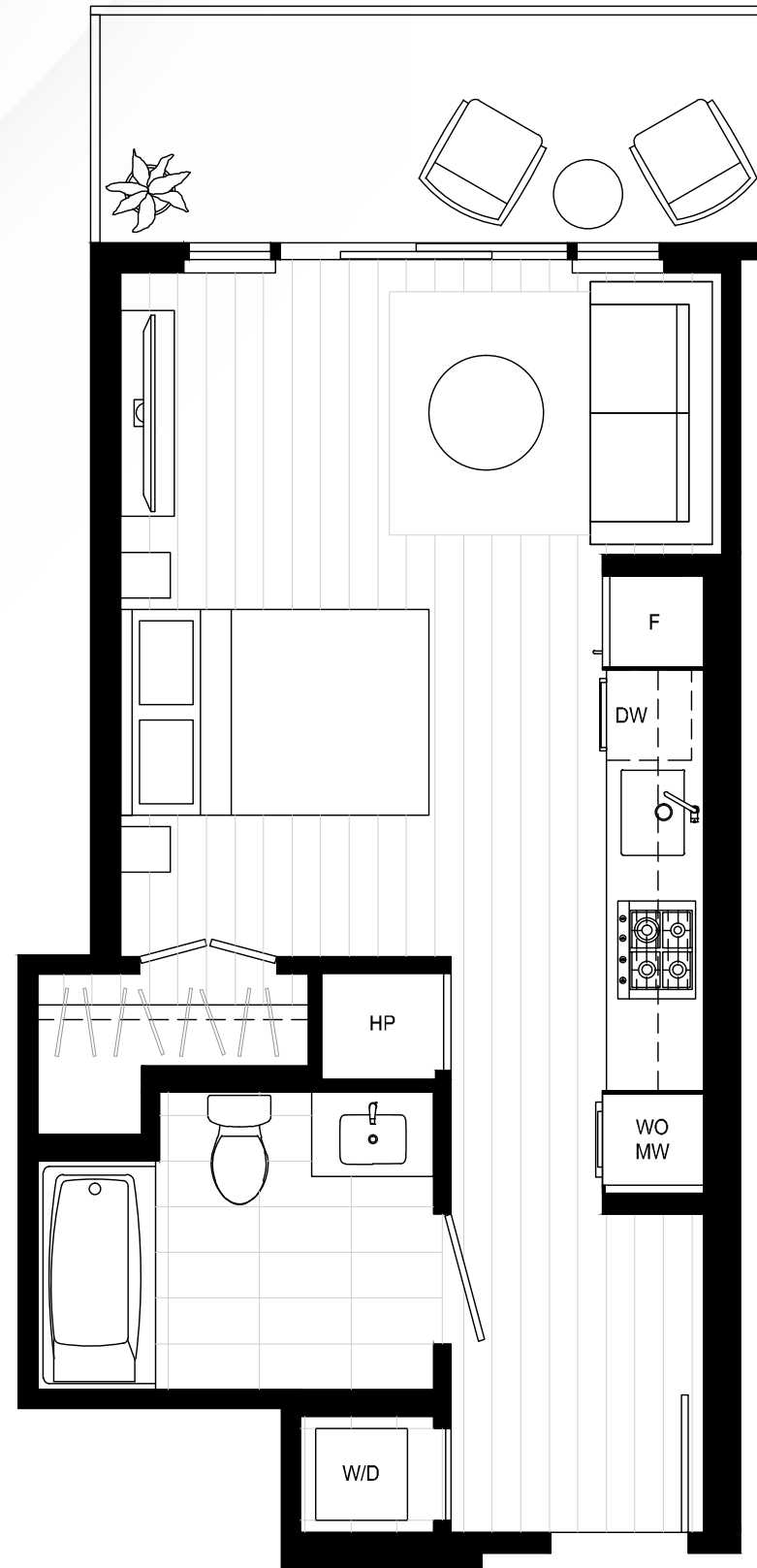
# PLAN A

STUDIO  
1 BATH

INTERIOR 397-400 SF  
EXTERIOR 82 SF

TOTAL 479-482 SF

SOUTH TOWER



# PLAN B

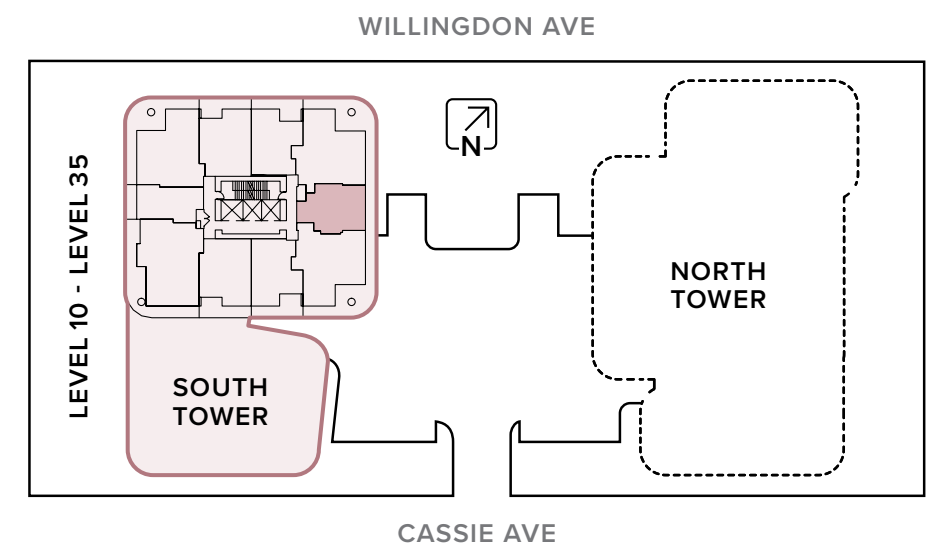
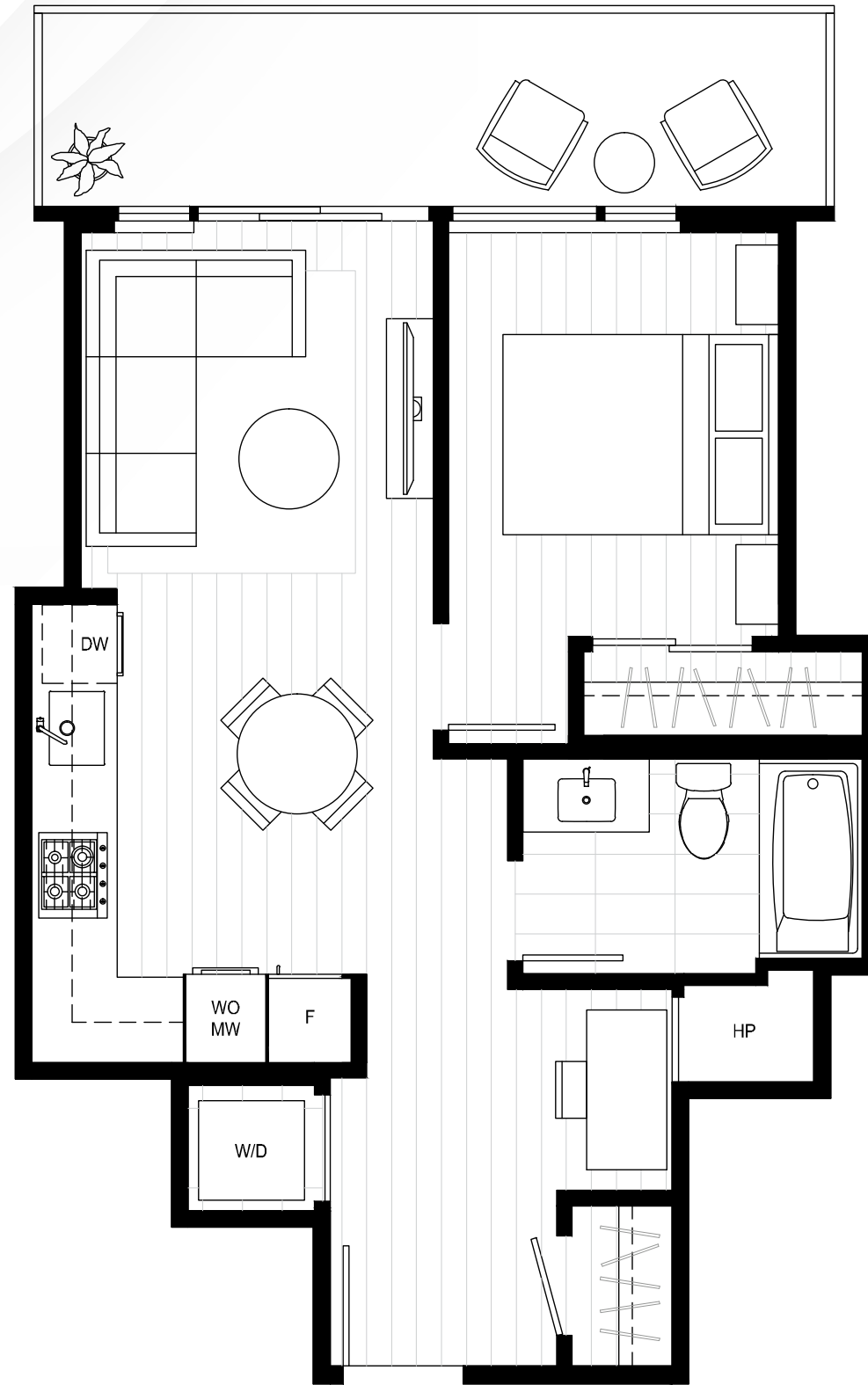
1 BEDROOM  
1 BATH

INTERIOR 533-539 SF  
EXTERIOR 111 SF

---

TOTAL 644-650 SF

SOUTH TOWER

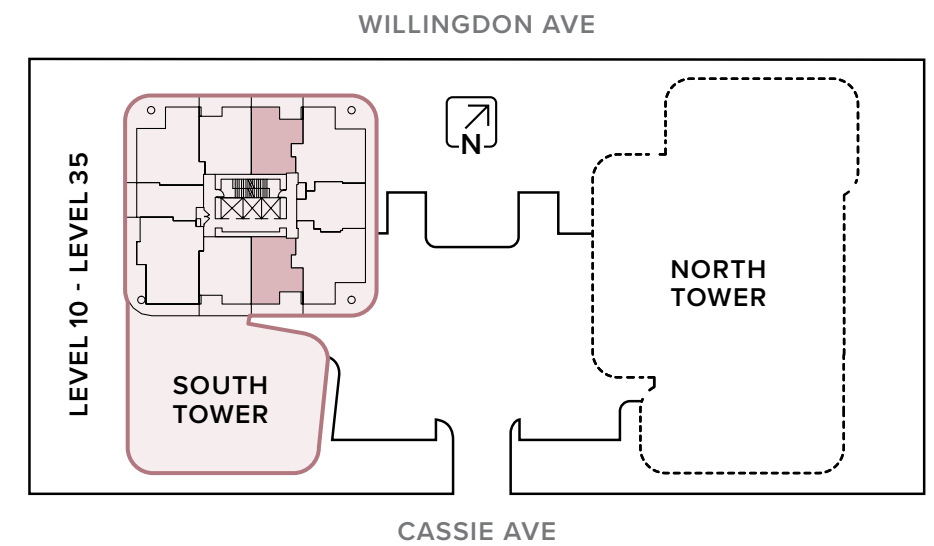


# PLAN B1

1 BEDROOM  
1 BATH

INTERIOR	540 SF
EXTERIOR	164-165 SF
<hr/>	
TOTAL	704-705 SF

SOUTH TOWER

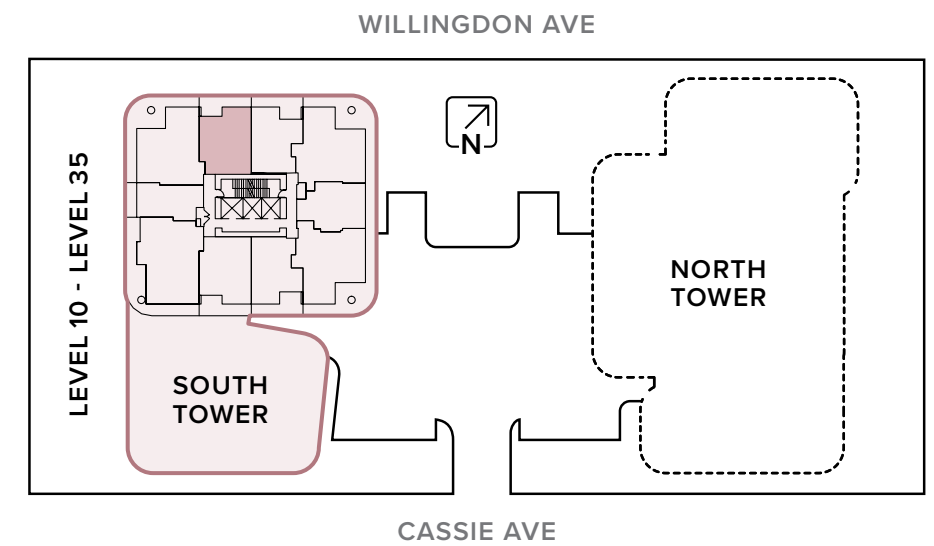
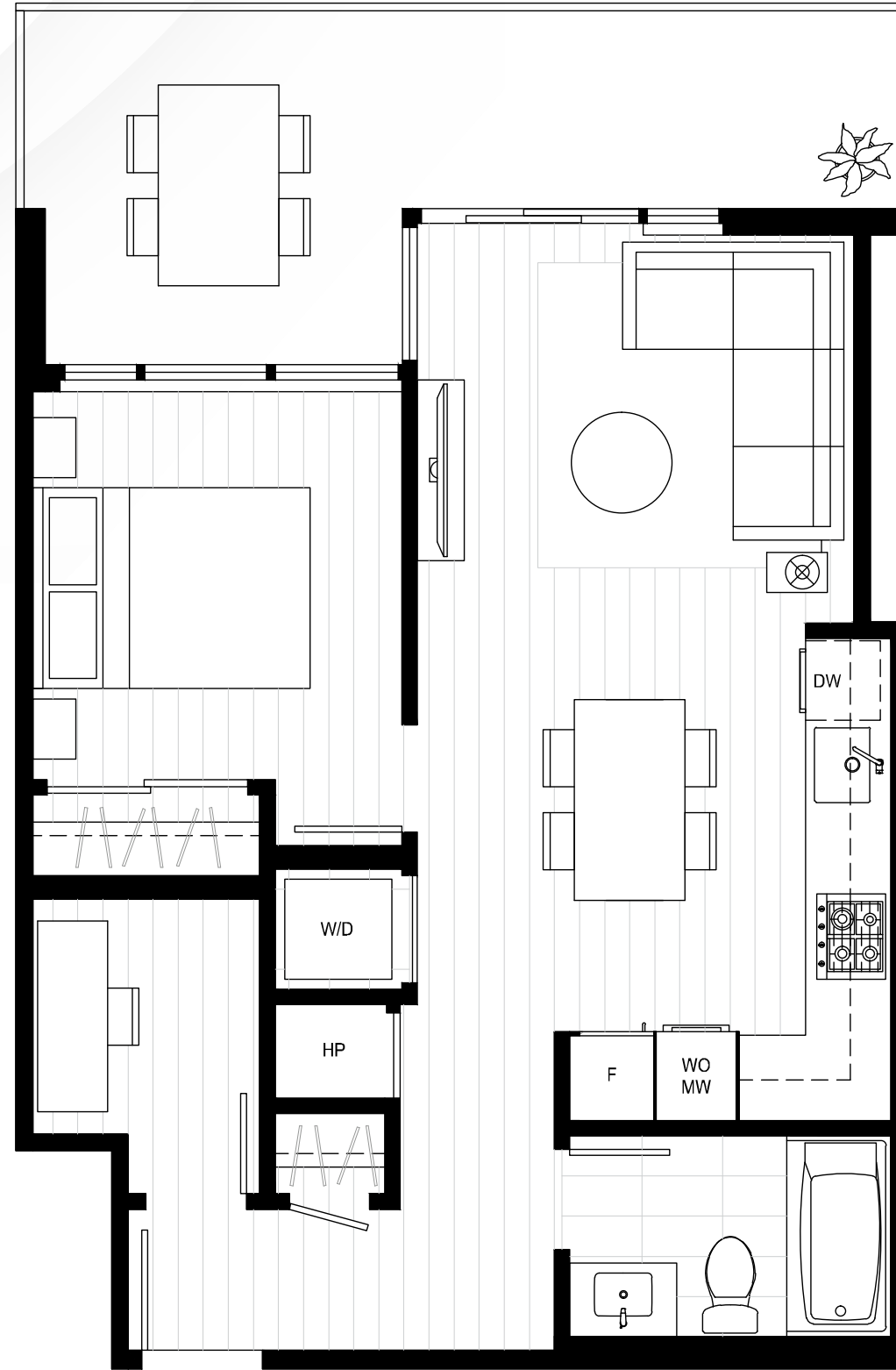


# PLAN B2

1 BEDROOM + DEN  
1 BATH

INTERIOR	592 SF
EXTERIOR	150 SF
TOTAL	742 SF

SOUTH TOWER



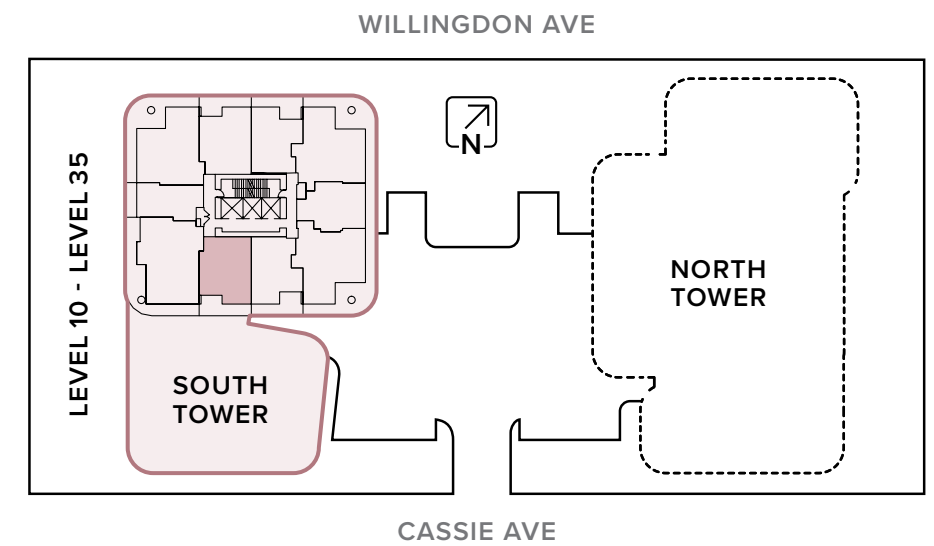
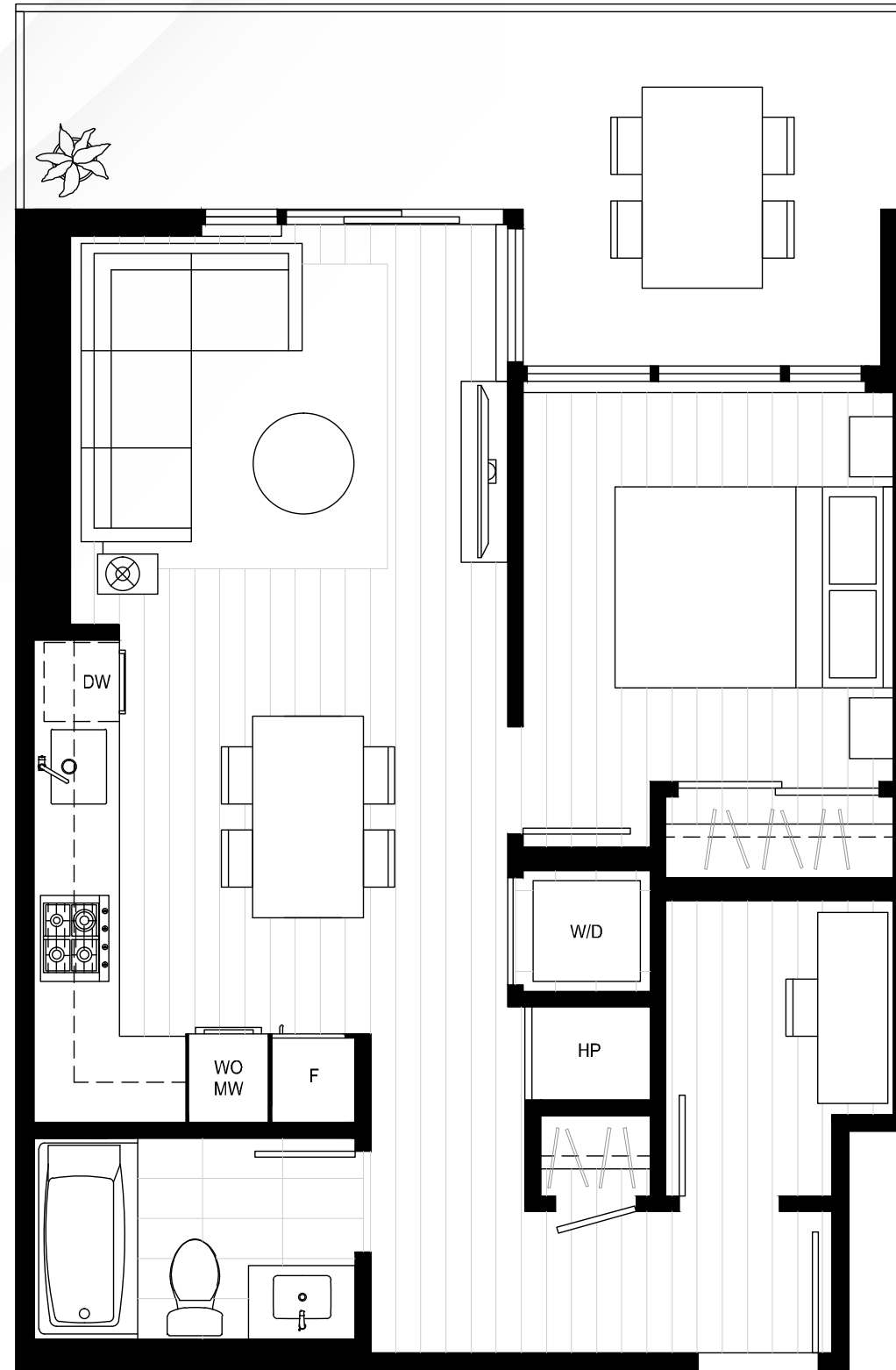


# PLAN B3

1 BEDROOM + DEN  
1 BATH

INTERIOR	596 SF
EXTERIOR	150 SF
TOTAL	746 SF

SOUTH TOWER



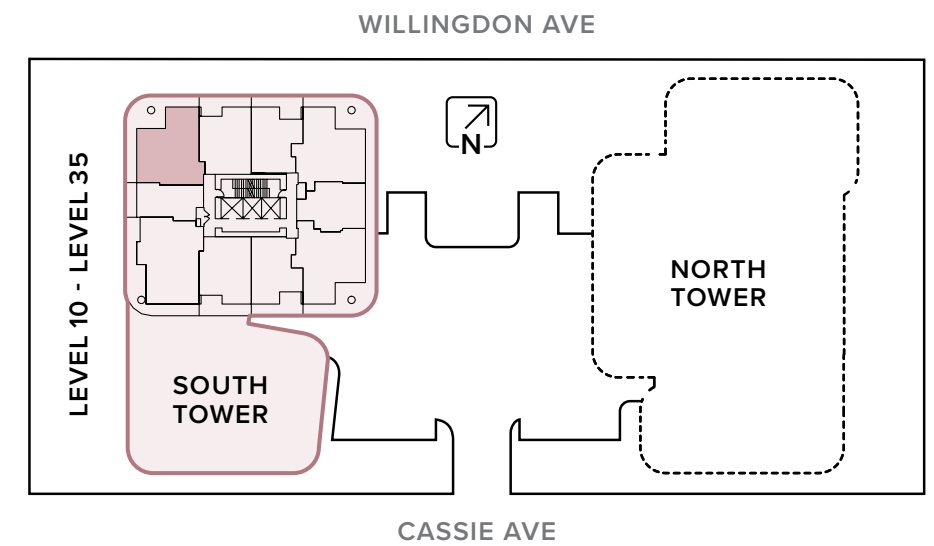
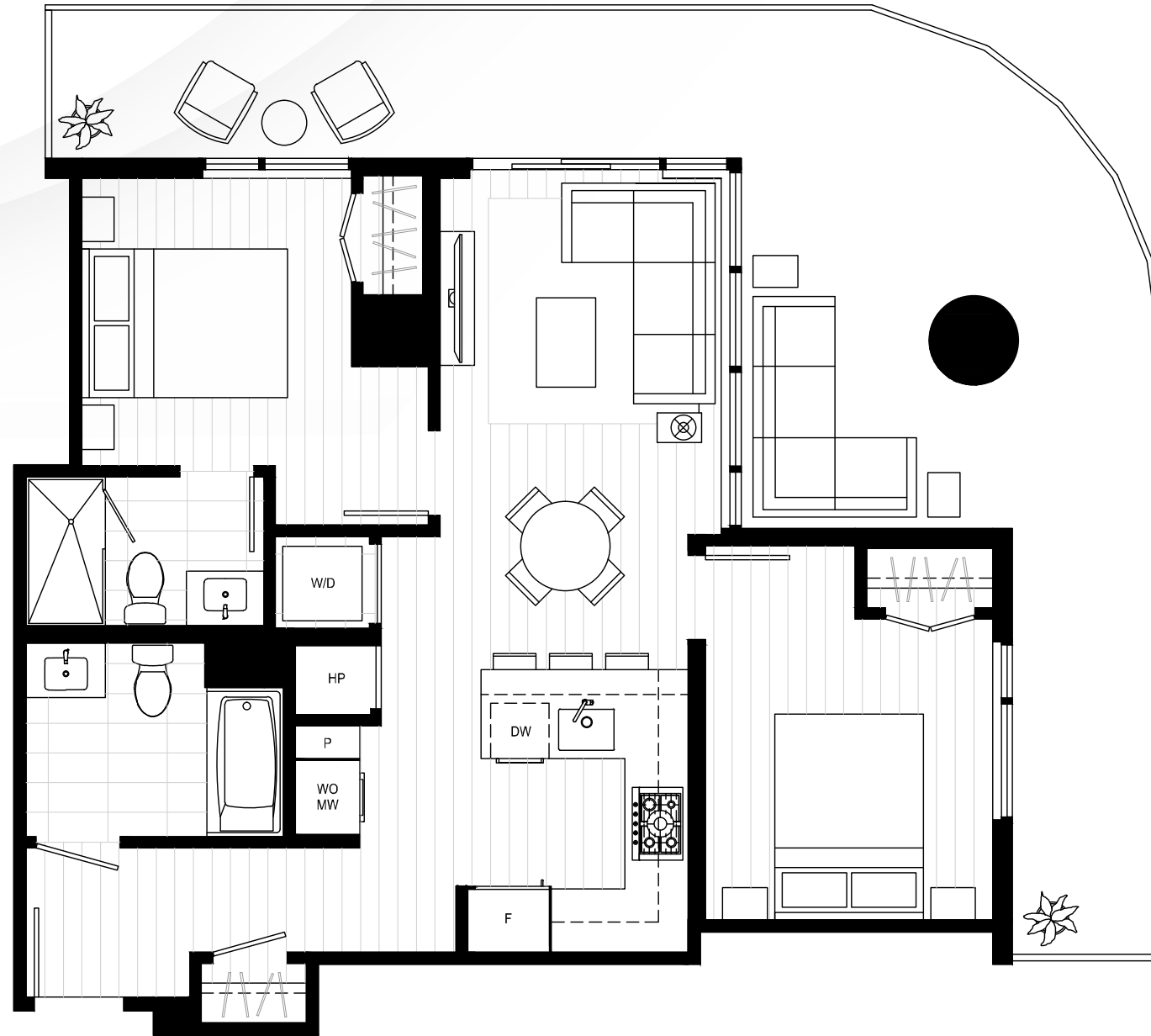
# PLAN C

2 BEDROOM  
2 BATH

INTERIOR 803-807 SF  
EXTERIOR 409 SF

TOTAL 1,212-1,216 SF

SOUTH TOWER



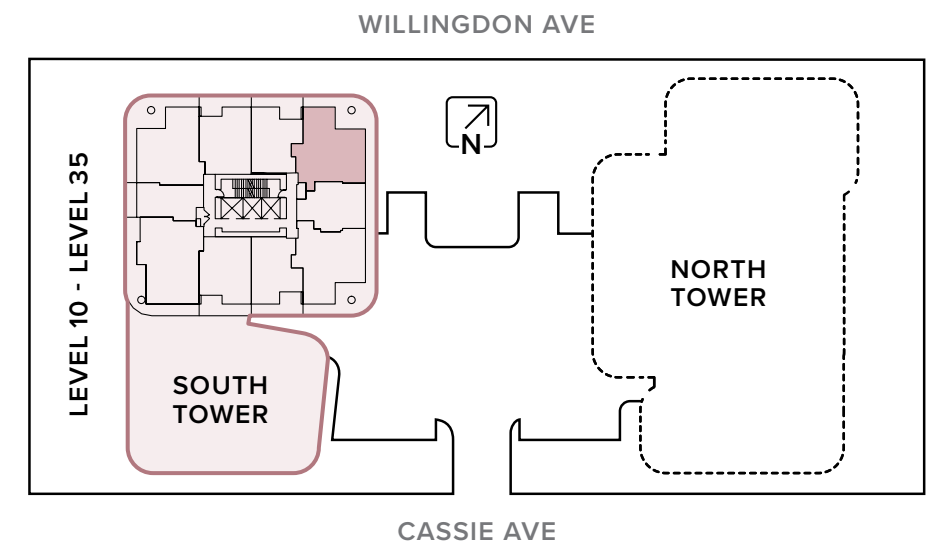
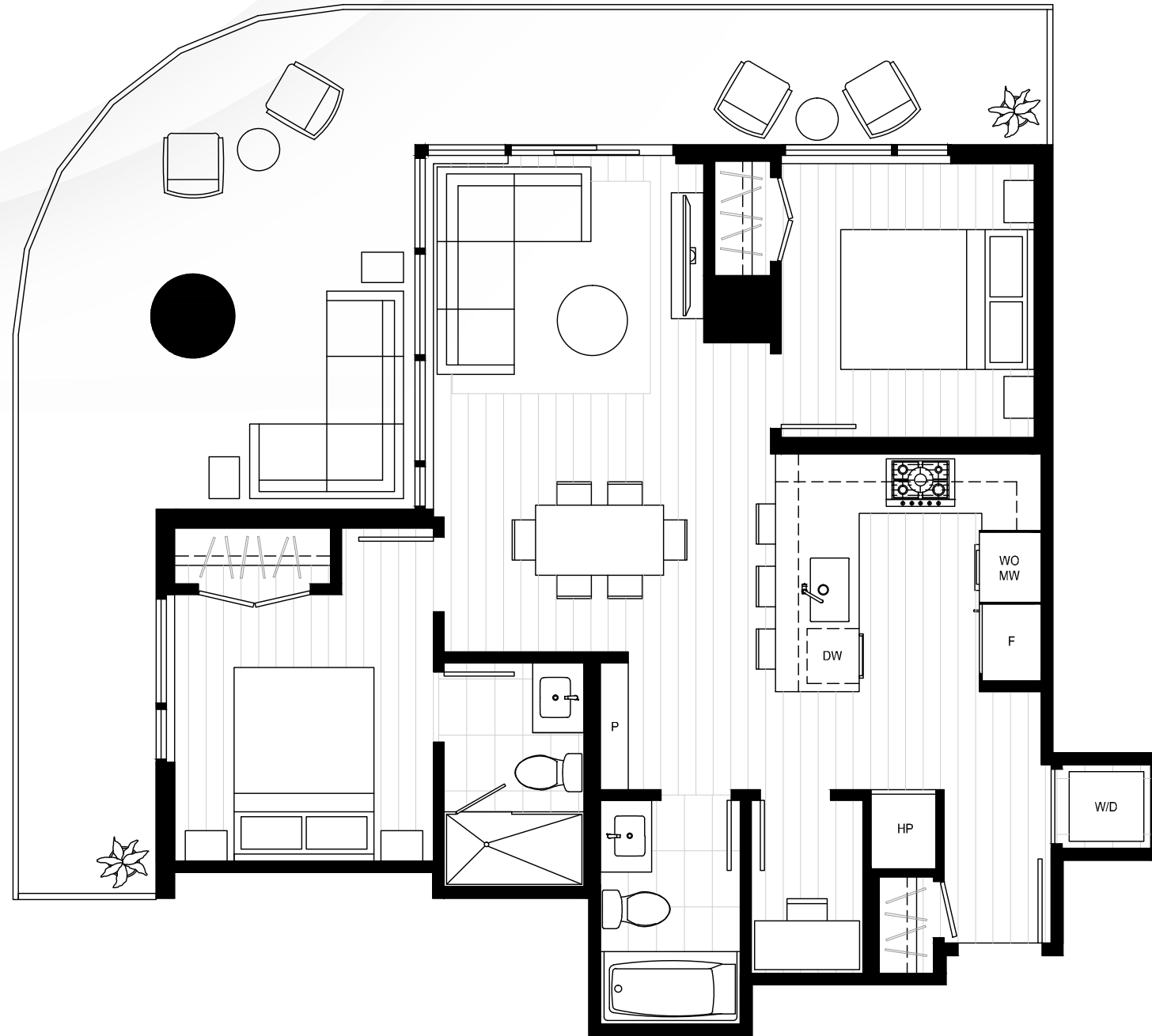
# PLAN C1

2 BEDROOM + DEN  
2 BATH

INTERIOR 814-817 SF  
EXTERIOR 410 SF

TOTAL 1,224-1,227 SF

SOUTH TOWER



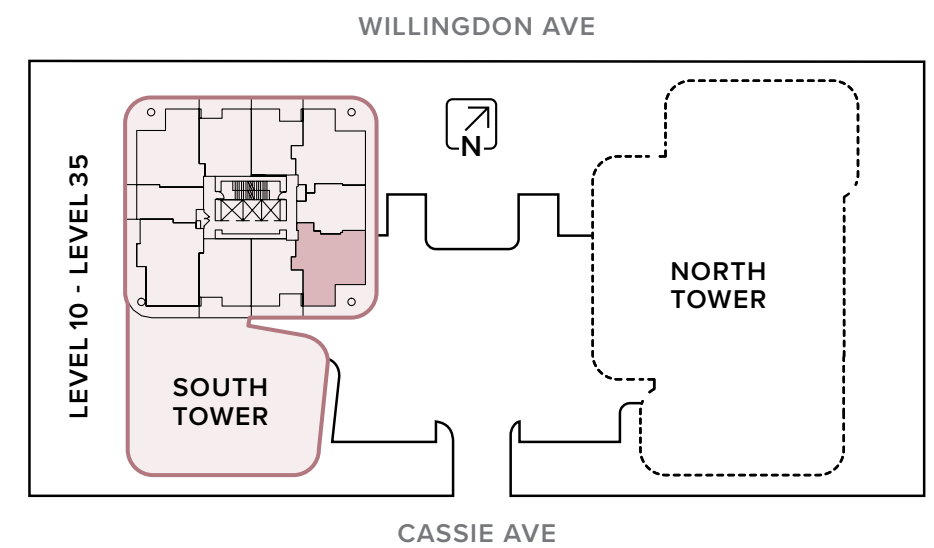
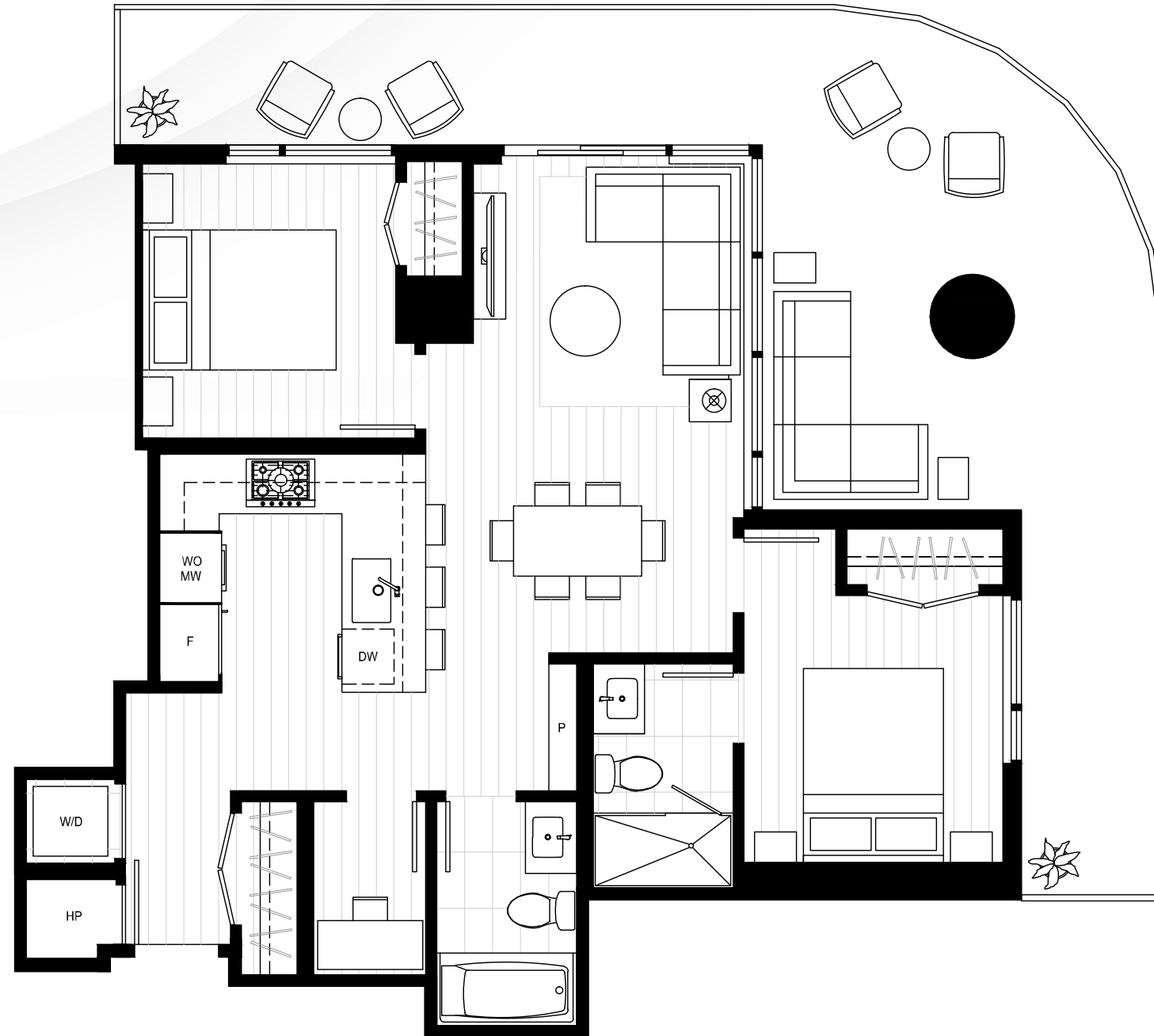
# PLAN C2

2 BEDROOM + DEN  
2 BATH

INTERIOR 821-826 SF  
EXTERIOR 408 SF

TOTAL 1,229-1,234 SF

SOUTH TOWER

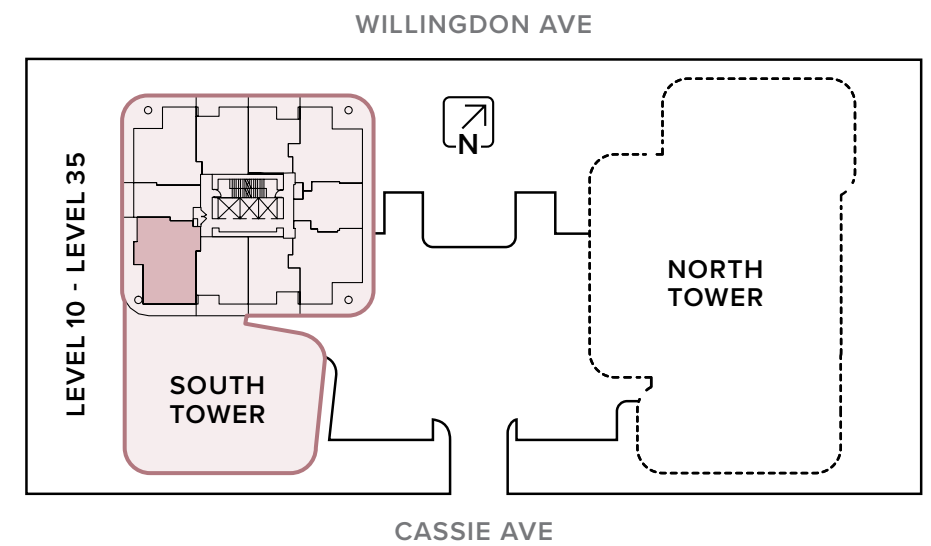
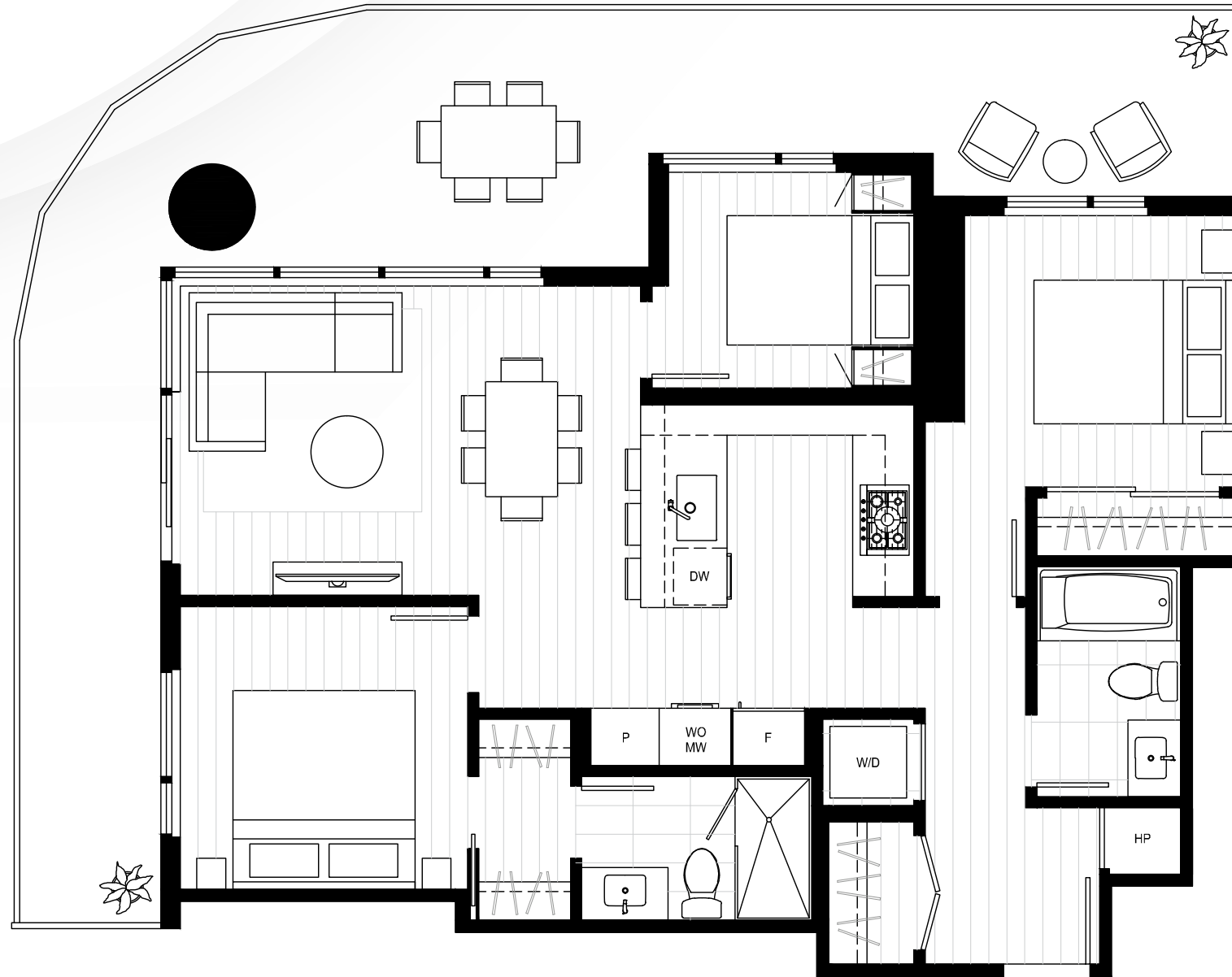


# PLAN D

3 BEDROOM  
2 BATH

INTERIOR	926 SF
EXTERIOR	407 SF
TOTAL	1,333 SF

SOUTH TOWER



wesgroup

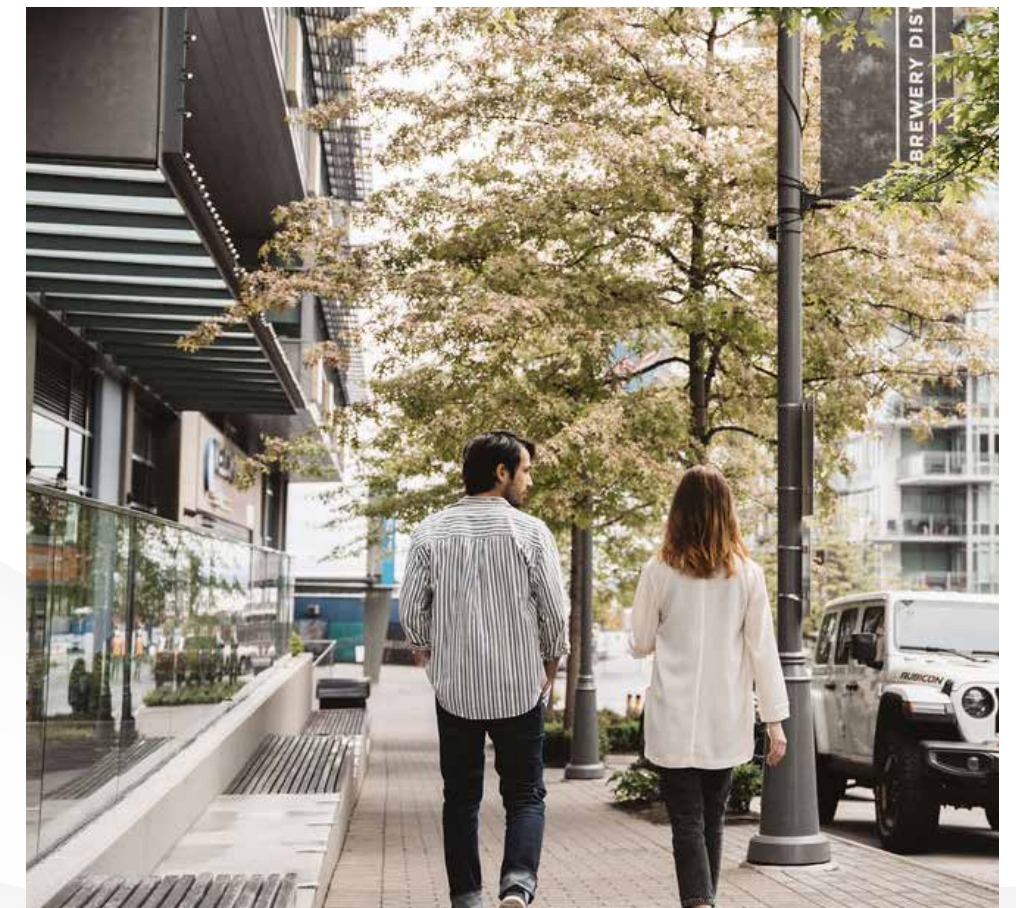
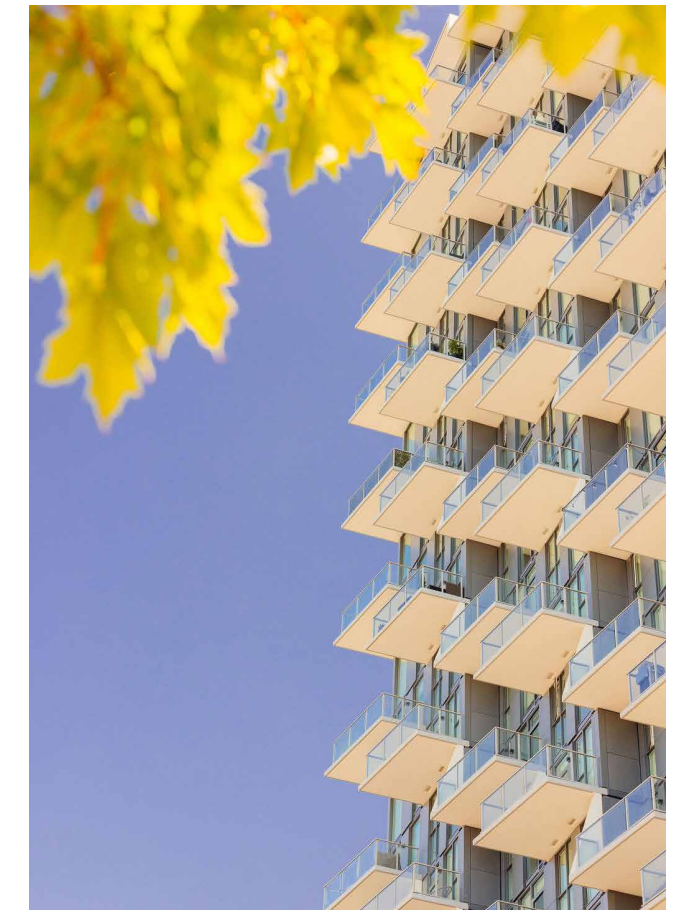
# WE BUILD MORE THAN SKYLINES

What began as a local family business over 60 years ago has grown into one of Western Canada's most respected private real estate organizations.

At Wesgroup, we do development differently. From planning and design to overseeing every facet of construction, and our extensive customer care program, each phase of a project is done in-house.

When you choose a Wesgroup home, it's with the knowledge and security that we stand behind the communities that we build. After all, we live here too.

[wesgroup.ca](http://wesgroup.ca)



# REIGN

AT METROTOWN



Presentation Centre  
4366 Beresford St., Burnaby, BC

[ReignByWesgroup.ca](http://ReignByWesgroup.ca)

**wesgroup**

The developer reserves the right to modify in its discretion to make changes or substitutes to the building design, specifications, features and floorplans should they be necessary. Renderings, views, and layouts are for illustration purposes only. Square footage is approximate. Actual final dimensions following completion of construction may vary from those set out herein. E.&O.E.

# REIGN

AT METROTOWN

## FEATURES & FINISHES

## EFFORTLESSLY DISTINCTIVE

A sleek silhouette in the Metrotown skyline, Reign's curved architectural forms and designs create remarkable spaces for large wrap-around balconies that naturally flow into spacious interiors. Combined with features and amenities that give you curated sophistication at every turn, the homes at Reign are your mark of distinction.





Enjoy outdoor dining on the rooftop patio as you watch the sunset.

#### SOUTH TOWER AMENITIES

- Elegant double-height lobby with parcel storage space
- Convenient dog spa on the first floor
- Easy access bike storage lockers in the parkade
- Kitchen & dining lounge on level 9 with outdoor BBQ & fire pit areas, games room with fireplace, theatre room, children's playroom, indoor/outdoor co-working space, outdoor mini putt, sun lounge & outdoor children's playground

#### NORTH TOWER AMENITIES

##### FLOORS 1-3

- Grand double-height lobby with a concierge & parcel storage

- 2-storey fitness club with half basketball court, pickleball court, cardio & weight zones, TRX boxing and yoga studio
- Level 3 features golf stimulator with seating and bar, and two guest suites for hosting friends & family

##### FLOOR 38 & ROOFTOP

- Lounge, seating & billiards area, indoor chef's kitchen with long table seating, and outdoor dining lounge with a fireplace, BBQs & seating
- Spa with steam room, sauna, ceiling rain showers, & outdoor cold plunge & hot tub



#### LIVING

- Select from 3 colour schemes: light, medium, dark
- 27" front-loading Whirlpool washer & dryer (24" Samsung washer & dryer in studios)
- Laminate wood flooring throughout

#### KITCHEN

- Sleek, contemporary profile quartz countertop & full-height backsplash
- Cabinetry with laminate or painted doors & soft close hardware\*
- Drawers with cutlery organizer
- Miele premium appliance package in two and three bedroom homes, including:
  - 30" integrated fridge with bottom freezer
  - 30" built-in convection oven
  - 30" gas cooktop with 5 burner 1 single wok
  - 24" integrated dishwasher

- Miele premium appliance package in studio and one bedroom homes, including:
  - 24" integrated fridge with bottom freezer
  - 24" built-in convection oven
  - 24" gas cooktop with 4 burner 1 single wok
  - 24" integrated dishwasher
- Panasonic microwave with trim kit
- AEG slide-out hood fan
- 29" undermount, single-bowl sink\* (24" studios and one bedrooms)
- Kohler pull-down single-handle kitchen sink faucet in 3 finishes (brushed moderne brass, brushed nickel, matte black)
- Undercabinet & pantry lighting\*
- Pull-out recycling centre which includes an under-sink removable sliding basket organizer
- Magic corner pull-out trays\*, or a Lazy Susan\* for easy kitchen organization





## BATHROOMS

- Elegant quartz countertop with luxurious 6" apron
- Laminate or painted cabinet doors with soft close hardware
- Bidet in the primary ensuite\*\*
- Single-handle bathroom faucet (brushed moderne brass, brushed nickel, matte black)
- Sleek undermount sink
- Handheld shower & rain head in the primary ensuite\*\*
- Frameless glass shower enclosure in the primary ensuite\*\*
- Integrated LED lighting strip for the primary ensuite\*\* medicine cabinet
- 2-drawer floating vanity

- Tiled shower niche
- Vanity wall sconces in all bathrooms
- Oval mirrors in the main bath and oval medicine cabinets in the primary ensuite\*\*
- Energy-efficient in-floor heating in the primary ensuite\*\*

## SAFETY & SECURITY

- Secured underground parking
- Travelers Canada 2-5-10 New Home Warranty

\*In Select Homes

\*\*Studio & 1 bedroom homes include primary ensuite specifications

604 440 5444

sina@almasi.ca

Almasi.ca

wesgroup

Dimensions, sizes, specifications, layouts and materials are approximate only and subject to change without notice. E.&O.E