

ÉTOILE GOLD

Home Type	Plan	Interior (SQFT)	Outdoor (SQFT)	Parking	Starting Price* From (Level 16)	Purchaser Incentive	Realtor's Bonus
1 Bedroom	E2 ■ E1	422 - 449	145		Mid \$500's	\$5,000	\$3,000
1 Bed + Den	D1	558	115		High \$600's	\$5,000	\$5,000
Jr. 2 Bedroom	C1 ■ C2	543 - 608	132 - 138		Low \$700's	\$7,500	\$5,000
2 Bedroom	B2 ■ B3	766 - 807	482 - 516		High \$800's	\$10,000	\$7,000
2 Bed + Den	B1	870	540		Low \$1 mil	\$10,000	\$7,000
3 Bed + Den	A1 ■ A2	974 - 977	464 - 727		Mid \$1.4 mil (Level 38)	\$20,000	\$10,000
3 Bedroom Live/Work	TH	1976 - 2086	340	2	Low \$1.7 mil	\$20,000	\$10,000

Deposit Structure	Total 15 / 20%
• Initial Deposit	\$20,000 BANK DRAFT payable upon SIGNING
• Second Deposit	5% within 7 DAYS of Acceptance Date less \$20,000
• Third Deposit	5% payable 4 MONTHS from the Initial Deposit
• Fourth Deposit	5% payable the later of: (I) Building Permit or the Financing Amendment; or (II) 12 MONTHS from the Initial Deposit
• Fifth Deposit (For Plan E1, E2, D1, C1, C2)	5% payable 30 MONTHS from the Initial Deposit
	All deposits are payable by bank draft to "Dentons Canada LLP In Trust"
Tower	47-storeys - 277 homes
Strata Fees	Estimated \$0.63 per square foot
Estimated Completion	Late 2027 / Early 2028

CONTACT DETAILS

Sina Almasi
 Personal Real Estate Corporation
 Email: sina@almasi.ca
 Phone: 604-440-5444

MILLENNIUM

M A G N U M

This is not an offering for sale. Any such offering can only be made with the applicable Disclosure Statement. E & O E
 *Prices, sizes and availability subject to change without notice and do not include applicable taxes. E&OE 2023.09.06



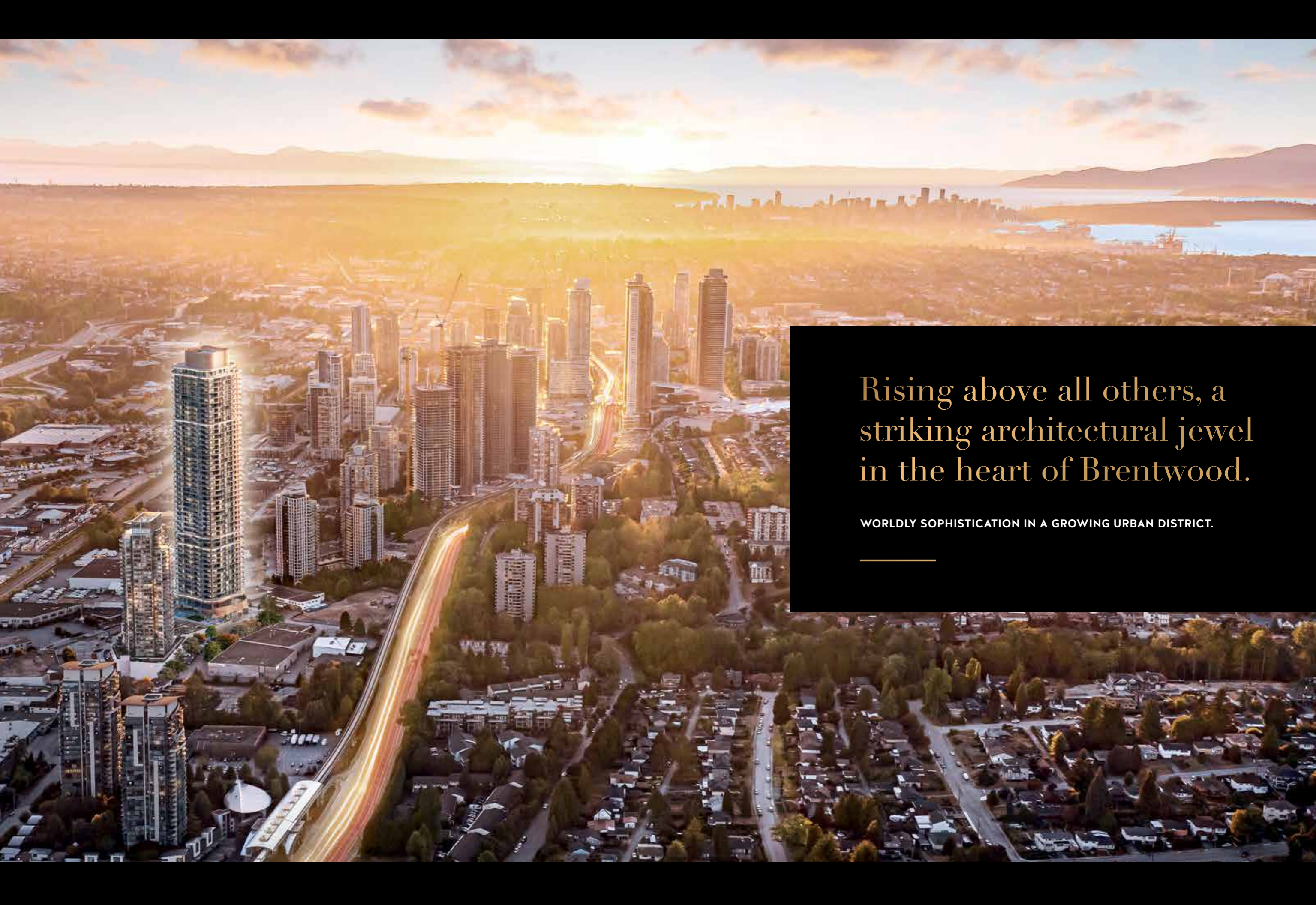
ÉTOILE GOLD

47 Storeys of pure luxury complete the Étoile community.

Building on the success of the first two landmark towers, Étoile Gold will transform the skyline with its supremely modern and architecturally stunning silhouette.

Étoile Gold's upscale residences, elegant design and stellar location – close to a lively urban hub yet removed from the hustle and bustle – offer an investment and home ownership opportunity like no other.





Rising above all others, a
striking architectural jewel
in the heart of Brentwood.

WORLDLY SOPHISTICATION IN A GROWING URBAN DISTRICT.

Brentwood Neighbourhood.

THE SOUGHT-AFTER PLACE TO BE.



Central, Connected and Cosmopolitan.

The Brentwood Town Centre abounds with hot spots for shopping, dining and entertainment. It's a great enclave for socializing.

Modern conveniences from Whole Foods to VIP movie theatres dot the landscape, Simon Fraser University's Burnaby campus is just up the hill, and the magnificent 770-acre Burnaby Lake Regional Park is a mere stroll away. Adding to Brentwood's cachet is the convenience of a walkable lifestyle and direct access to rapid transit.



Building dreams & creating communities.



1



2



3

Millennium

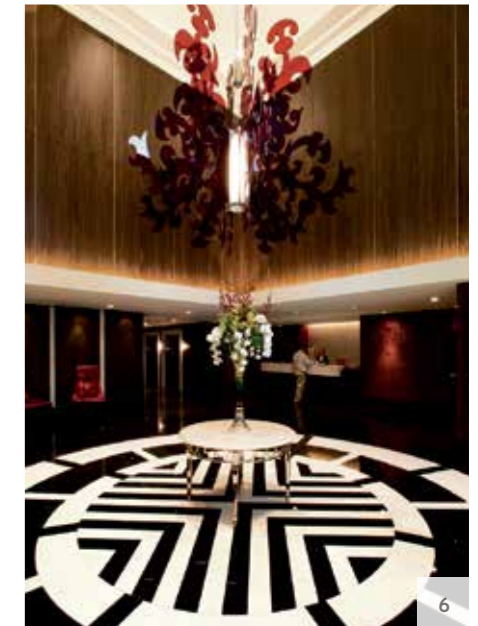
Powered by a quest for excellence, and with over 70 years of experience in construction and real estate development spanning three continents, Millennium creates landmark communities with a distinct sense of place.



4



5



6



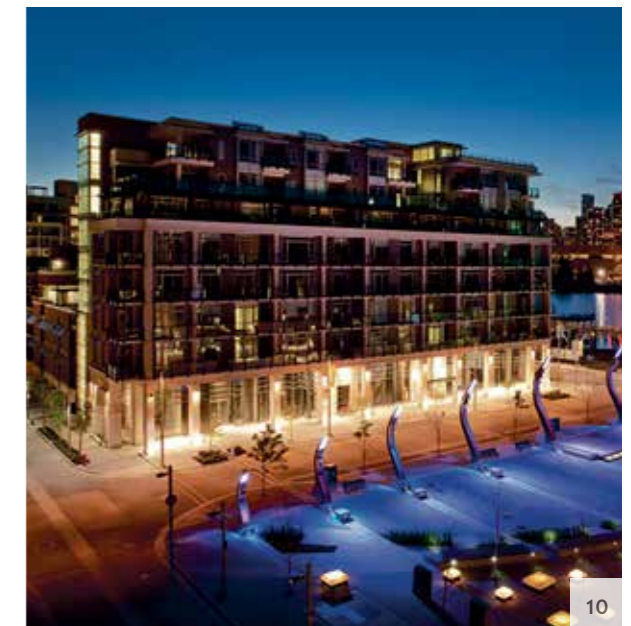
7



8



9



10

1/ WATER'S EDGE, WEST VANCOUVER 2/ EDGEWATER, WEST VANCOUVER
3/ MILLENNIUM CENTRAL LONSDALE, NORTH VANCOUVER 4/ ÉTOILE, TOWER 1 & 2,
BRENTWOOD 5/ CITY IN- THE -PARK, BURNABY 6/ L'HERMITAGE, VANCOUVER
7/ TRIOMPHE, BRENTWOOD 8/ WATER'S EDGE, WEST VANCOUVER 9/ LUMIÈRE,
STANLEY PARK 10/ MILLENNIUM'S OLYMPIC VILLAGE.

A modern masterpiece. Distinctive by design.

Impressive and inviting.

An arched filigree lattice anchors the tower, framing the grand entry. Expansive private outdoor sanctuaries follow the curvature of the tower's silhouette. The gentility in design culminates in understated classic luxury.





The gold standard:
A home of distinction with
unprecedented amenities.



The heart of the home is beautifully designed and engineered to perfection.

Top-of-the-line Italian appliances by Bertazzoni.

Bertazzoni's affinity for design and innovation produces kitchen appliances that are aesthetically pleasing and function perfectly. Quartz slab backsplash and waterfall island countertops, and soft-close European-style cabinetry complete the elegant setting.



Pamper your body and soul in luxury.

Bathed in elegance from the large format marble-inspired porcelain floor and wall tiles to the polished quartz countertops and modern free-standing tub, the master ensuite transcends the extraordinary.



Extravagant balconies with open views
create a magical outdoor haven.



Balconies in two-bedroom suites start at approximately 500 sq ft. Such an abundance of outdoor space, unobstructed views and complete privacy with no neighbours looking in, creates a grand bridge between your home and the natural world.

Upscale amenities span 5 levels.



Welcome home to
a wealth of choice.

Beautiful to the eye, from the contemporary lobby to the fireplace lounge and music room, Étoile Gold is designed for those with impeccable taste and a zest for life.



A world-class first impression.

From the moment you step inside the grand double-height lobby, a concierge at your service, the feeling of having arrived is undeniable.



Make the simple pleasures in life paramount every day.

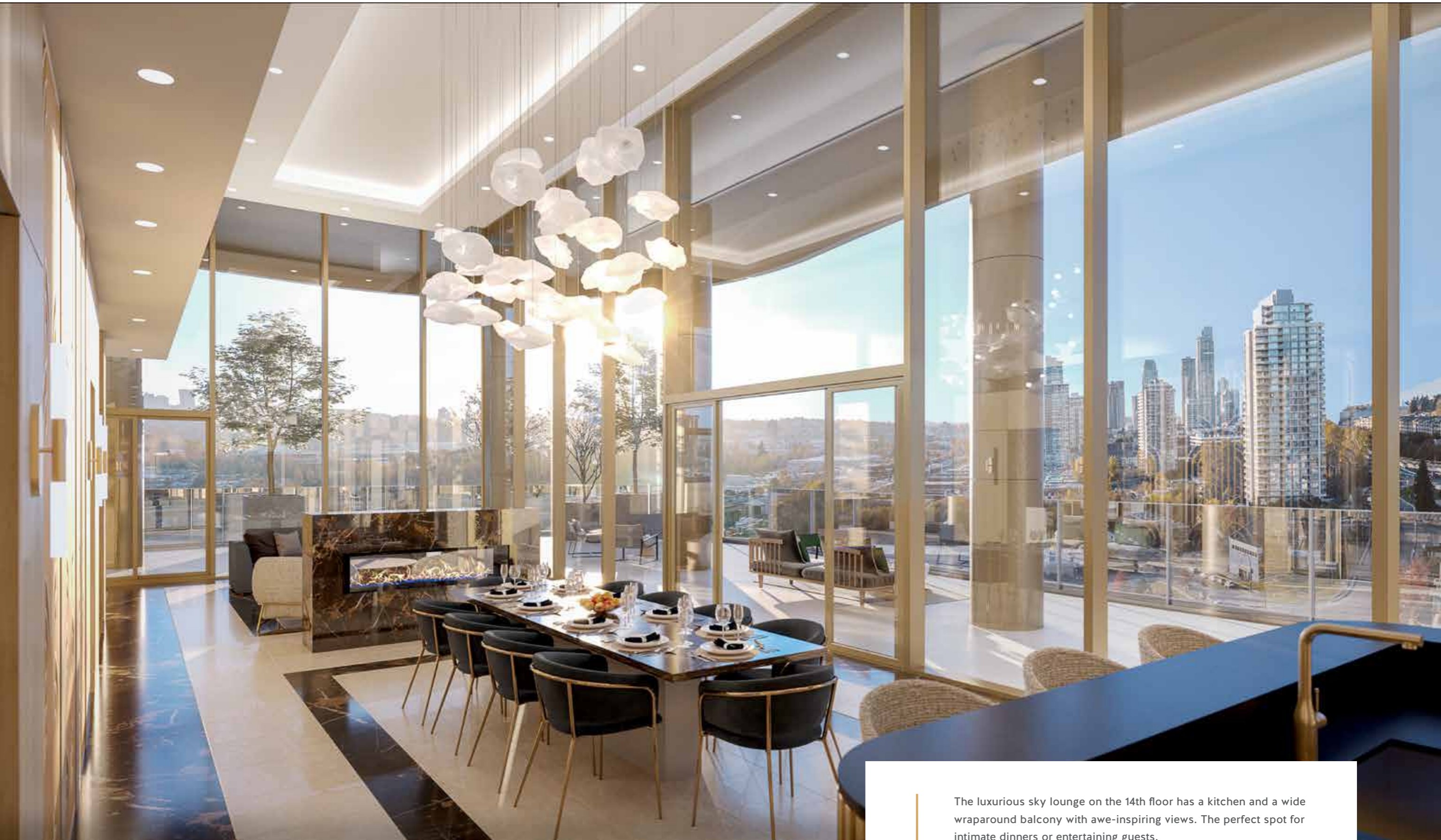
Whether for a music lesson or a quiet retreat, the music room offers a welcoming space to refocus and unwind.



Shared space, a reflection of refined tastes.

Off the lobby is a large fireplace lounge and library with multiple seating areas and workspaces equipped with charging stations. Other lifestyle amenities include two beautifully finished guest suites.





The luxurious sky lounge on the 14th floor has a kitchen and a wide wraparound balcony with awe-inspiring views. The perfect spot for intimate dinners or entertaining guests.

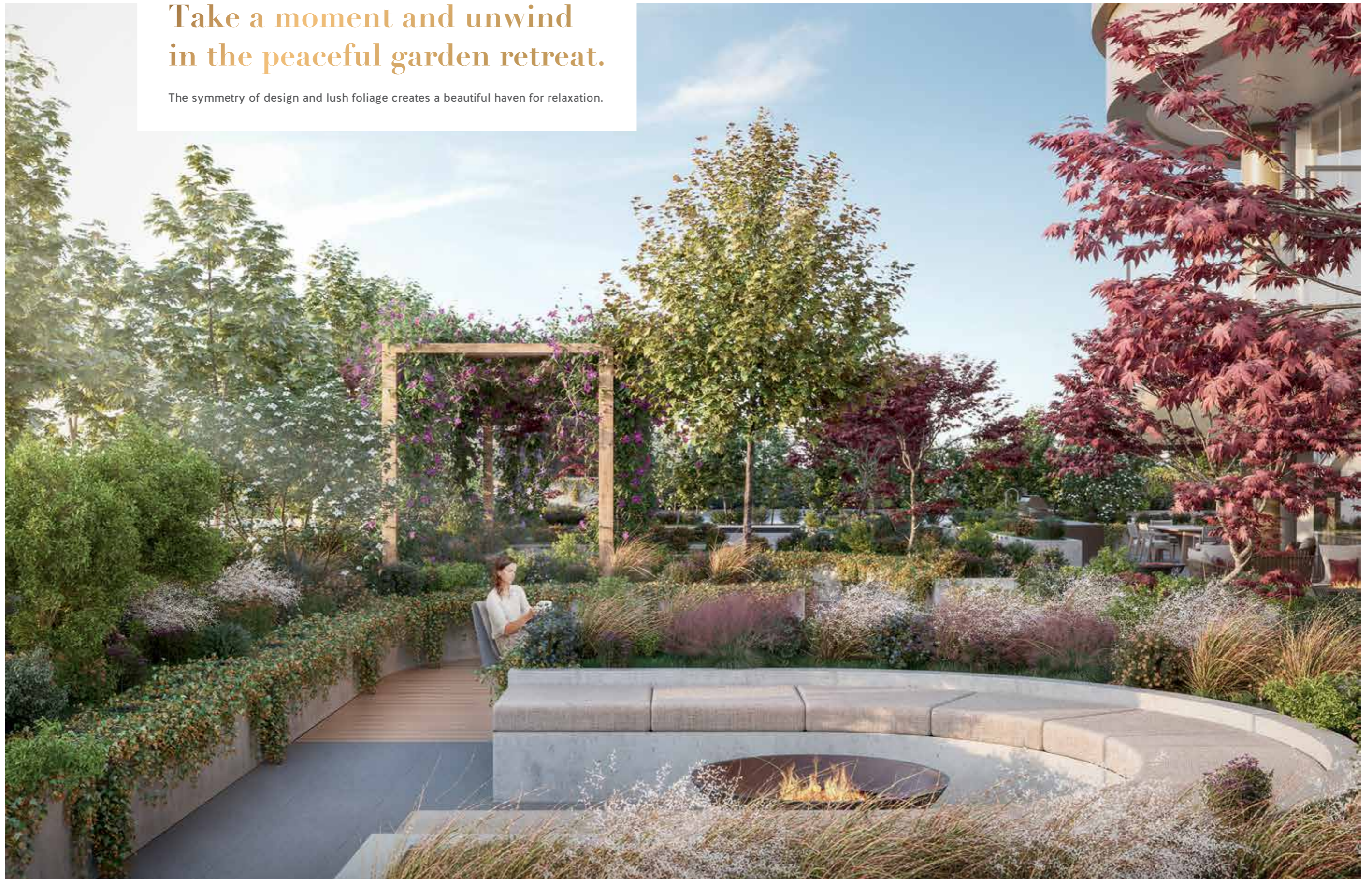
Relax in
serenity
& style.



Your private paradise echoes the elegance and ambiance of a boutique resort.

Take a moment and unwind
in the peaceful garden retreat.

The symmetry of design and lush foliage creates a beautiful haven for relaxation.





Tranquil yoga studio



Expansive state-of-the-art fitness centre

Multiple levels of amenities elevate everyday life.

The large multi-function social room is ideal for casual gathering. It offers many attractions, including a billiard table, spacious lounge, dining area and kitchen, and opens onto an expansive garden with a water feature, firepit, terrace seating and outdoor dining, plus a play area for children.



ÉTOILE GOLD

Features + Amenities

MILLENNIUM

A striking architectural jewel with expansive balconies, sweeping views and resort-style amenities.

Conceived by Millennium and masterfully designed by award-winning Chris Dikeakos Architects, Étoile Gold offers supremely luxurious, modern living in the central, connected and sought-after Brentwood neighbourhood.

REDEFINING MODERN LUXURY

- › 47 storeys, the tallest tower in the community
- › 277 units starting from the 16th floor, consisting of 1, 2 and 3 bedroom suites, ranging from 422 to 1,318 sq ft, and three-level townhome residences
- › Hotel style grand lobby with a double-height ceiling and elegant lounge offers an impressive welcome
- › High performance thermal envelope

ELEGANT LIVING

- › Choice of 2 colour schemes: Dawn and Dusk
- › 9' ceilings in main living areas
- › Wood laminate flooring throughout
- › Triple-glazed energy-efficient windows
- › Custom millwork closet organizers in the primary bedrooms in select homes

Expansive balconies for seamless indoor/outdoor living

- 1 bedrooms up to 155 sq ft
- 2 bedrooms up to 575 sq ft
- 3 bedrooms up to 1,256 sq ft
- › Radiant ceiling heaters on some balconies and terraces
- › Air-conditioning in all homes for year-round comfort
- › Custom roller shade window coverings
- › Solid core doors leading to bedroom and bathrooms
- › Smooth plastered ceilings
- › Smart learning thermostat
- › High efficiency front-load washing machine and ventless dryer
- › Electrical outlets on all balconies

INSPIRED KITCHENS

- › Two-toned, soft-close European style cabinetry
- › Custom polished quartz slab waterfall island countertops
- › Custom polished quartz slab backsplash
- › Modern stainless steel sink with deluxe brushed gold kitchen faucet with spray

Top-of-the-line, Bertazonni appliances:

- Fully integrated refrigerator
- Fully integrated dishwasher
- Stainless steel gas cooktop
- Electric wall oven
- Hoodfan
- Panasonic Microwave

LUXURIOUS BATHROOMS

- › Spa-like ambiance inspires relaxation
- › Floating vanities with premium polished quartz countertops
- › Undermount single and double vanity sinks with modern chrome faucets
- › Floating mirrored backlit medicine cabinet in master ensuite
- › Environmentally friendly, efficient dual-flush toilets
- › Large format, marble-inspired porcelain floor tiles and tub/shower surround
- › Rain shower head and shower wand combo in select homes
- › Free-standing deep soaker tub in select homes
- › Smart toilets in select homes

RESORT-STYLE AMENITIES

Over 35,000 sq ft of indoor and outdoor amenities spanning 5 levels:

- › Outdoor swimming pool, hot tub and sundeck
- › Expansive fitness centre with state-of-the-art equipment
- › Entertainment lounge with dining area and billiard table
- › Luxurious 14th floor sky lounge and large wraparound terrace with stunning views
- › Lush gardens with terrace seating, outdoor cinema and dining area, putting green, urban gardening spaces plus a peaceful garden retreat.
- › Separate private steam rooms for men and women
- › Music room
- › Coworking lounge
- › Yoga studio
- › Dog wash station
- › Car wash stalls
- › Play area for children
- › Two hotel-style guest suites

COMPLETE PEACE OF MIND

- › Solid concrete construction
- › Secured, gated underground parking
- › Fob-controlled access to lobby, parkade, and individual floors
- › Concierge at your service
- › Dedicated parcel room
- › All parking stalls are EV ready
- › Secure bicycle storage
- › Comprehensive 2-5-10 year warranty

All illustrations and renderings reflect the artist's interpretation only and are not accurate representation of the actual project. Actual suite interiors, exteriors and views may be noticeably different than what is depicted in photographs and renderings. The developer reserves the right to make modifications, substitutions, change brands, sizes, colours, layouts, materials, ceiling heights, features, finishes and other specifications without prior notification. Such details are governed by the applicable offer to purchase and agreement for sale and disclosure statement.

ÉTOILE GOLD

Floorplate

LEVELS 16-37

Plan B1
2 Bedroom + Den
Total: 1410 s.f.
Interior: 870 s.f.
Exterior: 540 s.f.

Plan C2
Junior 2 Bedroom
Total: 740 s.f.
Interior: 608 s.f.
Exterior: 132 s.f.

Plan B1
2 Bedroom + Den
Total: 1410 s.f.
Interior: 870 s.f.
Exterior: 540 s.f.

Plan C1
Junior 2 Bedroom
Total: 681 s.f.
Interior: 543 s.f.
Exterior: 138 s.f.

Plan D1
1 Bedroom + Den
Total: 673 s.f.
Interior: 558 s.f.
Exterior: 115 s.f.

Plan B2
2 Bedroom
Total: 1281 s.f.
Interior: 765 s.f.
Exterior: 516 s.f.

Plan E1
1 Bedroom
Total: 594 s.f.
Interior: 449 s.f.
Exterior: 145 s.f.

Plan E2
1 Bedroom
Total: 567 s.f.
Interior: 422 s.f.
Exterior: 145 s.f.

Plan B3
2 Bedroom
Total: 1289 s.f.
Interior: 807 s.f.
Exterior: 482 s.f.



ÉTOILE GOLD

Floorplate

LEVELS 39-46

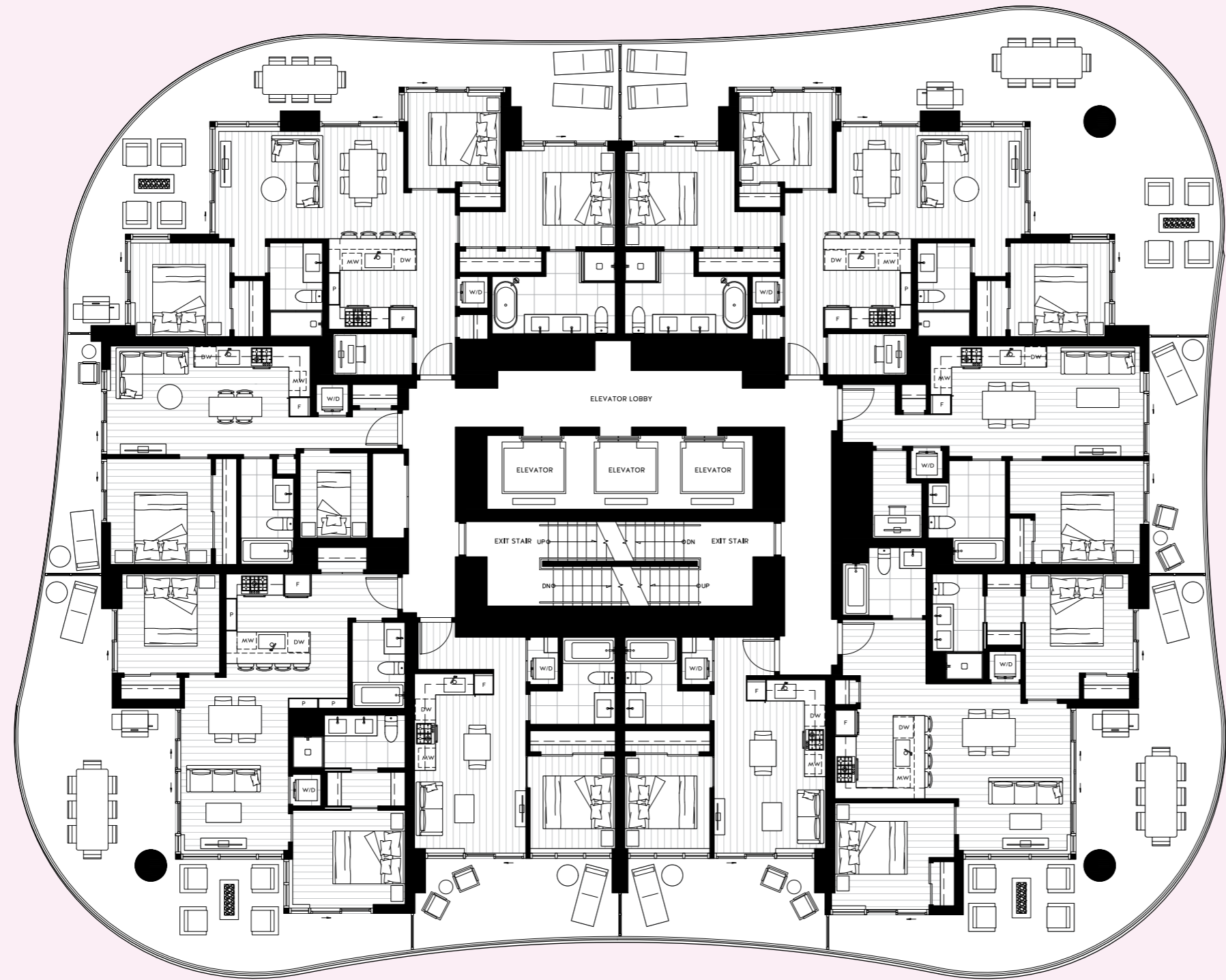


Plan A2
3 Bedroom + Den
Total: 1438 s.f.
Interior: 974 s.f.
Exterior: 464 s.f.

Plan A1
3 Bedroom + Den
Total: 1703 s.f.
Interior: 976 s.f.
Exterior: 727 s.f.

Plan C1
Junior 2 Bedroom
Total: 637 s.f.
Interior: 543 s.f.
Exterior: 94 s.f.

Plan D1
1 Bedroom + Den
Total: 677 s.f.
Interior: 558 s.f.
Exterior: 119 s.f.



Plan B2
2 Bedroom
Total: 1283 s.f.
Interior: 765 s.f.
Exterior: 518 s.f.

Plan E1
1 Bedroom
Total: 598 s.f.
Interior: 449 s.f.
Exterior: 149 s.f.

Plan E2
1 Bedroom
Total: 571 s.f.
Interior: 422 s.f.
Exterior: 149 s.f.

Plan B3
2 Bedroom
Total: 1298 s.f.
Interior: 807 s.f.
Exterior: 491 s.f.



PRESENTATION CENTRE
UNIT B, 4247 LOUGHEED HWY
AT MADISON

ETOILELIVING.COM
info@etoileliving.com
604.336.9600

DEVELOPED BY
MILLENNIUM

MARKETING BY
MAGNUM

All illustrations and renderings reflect the artist's interpretation only and are not accurate representation of the actual project. Actual suite interiors, exteriors and views may be noticeably different than what is depicted in photographs and renderings. The developer reserves the right to make modifications, substitutions, change brands, sizes, colours, layouts, materials, ceiling heights, features, finishes and other specifications without prior notification. Such details are governed by the applicable offer to purchase and agreement for sale and disclosure statement.

ÉTOILE GOLD

Features + Amenities

MILLENNIUM

A striking architectural jewel with expansive balconies, sweeping views and resort-style amenities.

Conceived by Millennium and masterfully designed by award-winning Chris Dikeakos Architects, Étoile Gold offers supremely luxurious, modern living in the central, connected and sought-after Brentwood neighbourhood.

REDEFINING MODERN LUXURY

- › 47 storeys, the tallest tower in the community
- › 277 units starting from the 16th floor, consisting of 1, 2 and 3 bedroom suites, ranging from 422 to 1,318 sq ft, and three-level townhome residences
- › Hotel style grand lobby with a double-height ceiling and elegant lounge offers an impressive welcome
- › High performance thermal envelope

ELEGANT LIVING

- › Choice of 2 colour schemes: Dawn and Dusk
- › 9' ceilings in main living areas
- › Wood laminate flooring throughout
- › Triple-glazed energy-efficient windows
- › Custom millwork closet organizers in the primary bedrooms in select homes

Expansive balconies for seamless indoor/outdoor living

- 1 bedrooms up to 155 sq ft
- 2 bedrooms up to 575 sq ft
- 3 bedrooms up to 1,256 sq ft
- › Radiant ceiling heaters on some balconies and terraces
- › Air-conditioning in all homes for year-round comfort
- › Custom roller shade window coverings
- › Solid core doors leading to bedroom and bathrooms
- › Smooth plastered ceilings
- › Smart learning thermostat
- › High efficiency front-load washing machine and ventless dryer
- › Electrical outlets on all balconies

INSPIRED KITCHENS

- › Two-toned, soft-close European style cabinetry
- › Custom polished quartz slab waterfall island countertops
- › Custom polished quartz slab backsplash
- › Modern stainless steel sink with deluxe brushed gold kitchen faucet with spray

Top-of-the-line, Bertazonni appliances:

- Fully integrated refrigerator
- Fully integrated dishwasher
- Stainless steel gas cooktop
- Electric wall oven
- Hoodfan
- Panasonic Microwave

LUXURIOUS BATHROOMS

- › Spa-like ambiance inspires relaxation
- › Floating vanities with premium polished quartz countertops
- › Undermount single and double vanity sinks with modern chrome faucets
- › Floating mirrored backlit medicine cabinet in master ensuite
- › Environmentally friendly, efficient dual-flush toilets
- › Large format, marble-inspired porcelain floor tiles and tub/shower surround
- › Rain shower head and shower wand combo in select homes
- › Free-standing deep soaker tub in select homes
- › Smart toilets in select homes

RESORT-STYLE AMENITIES

Over 35,000 sq ft of indoor and outdoor amenities spanning 5 levels:

- › Outdoor swimming pool, hot tub and sundeck
- › Expansive fitness centre with state-of-the-art equipment
- › Entertainment lounge with dining area and billiard table
- › Luxurious 14th floor sky lounge and large wraparound terrace with stunning views
- › Lush gardens with terrace seating, outdoor cinema and dining area, putting green, urban gardening spaces plus a peaceful garden retreat.
- › Separate private steam rooms for men and women
- › Music room
- › Coworking lounge
- › Yoga studio
- › Dog wash station
- › Car wash stalls
- › Play area for children
- › Two hotel-style guest suites

COMPLETE PEACE OF MIND

- › Solid concrete construction
- › Secured, gated underground parking
- › Fob-controlled access to lobby, parkade, and individual floors
- › Concierge at your service
- › Dedicated parcel room
- › All parking stalls are EV ready
- › Secure bicycle storage
- › Comprehensive 2-5-10 year warranty

All illustrations and renderings reflect the artist's interpretation only and are not accurate representation of the actual project. Actual suite interiors, exteriors and views may be noticeably different than what is depicted in photographs and renderings. The developer reserves the right to make modifications, substitutions, change brands, sizes, colours, layouts, materials, ceiling heights, features, finishes and other specifications without prior notification. Such details are governed by the applicable offer to purchase and agreement for sale and disclosure statement.